

Redemeyer Road Secondary Access Project

Introduction

- Currently in the Preliminary Engineering/Environmental Documents (PA&ED) Phase
- Project is funded through Plans, Specifications, and Estimate (PS&E) with Local Transportation Climate Adaptation Program (LTCAP) Cycle 1 grant funds
- LTCAP Cycle 2 grant funds have been approved by the California Transportation Commission (CTC) to fund Right-of-Way and Construction
- Alignment analysis has been completed, and a preferred alignment selected



Redemeyer Road Secondary Access Project

Purpose

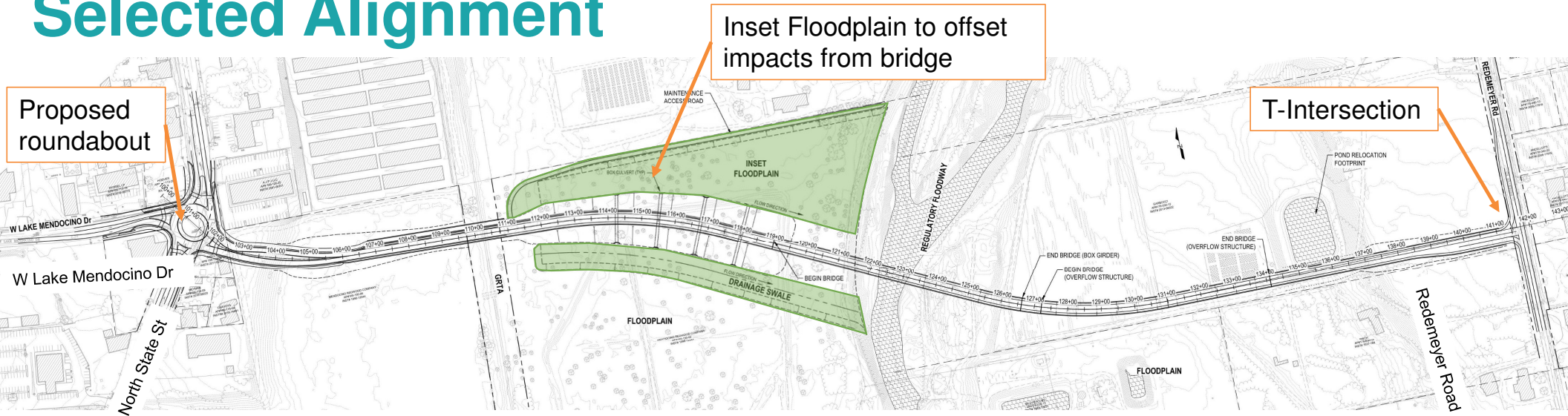
- Complete a necessary segment of the regional road system.
- Improve roadway access for residents of the Ukiah Valley on the east side.
- Provide a through connection for Redemeyer Road for residents and others in the area.
- Enhance transportation safety, access, and emergency response times, and improve climate resiliency.
- Support underserved and climate-vulnerable populations.
- Establish an all-weather route across the Russian River.
- Address existing infrastructure deficiencies.

Need

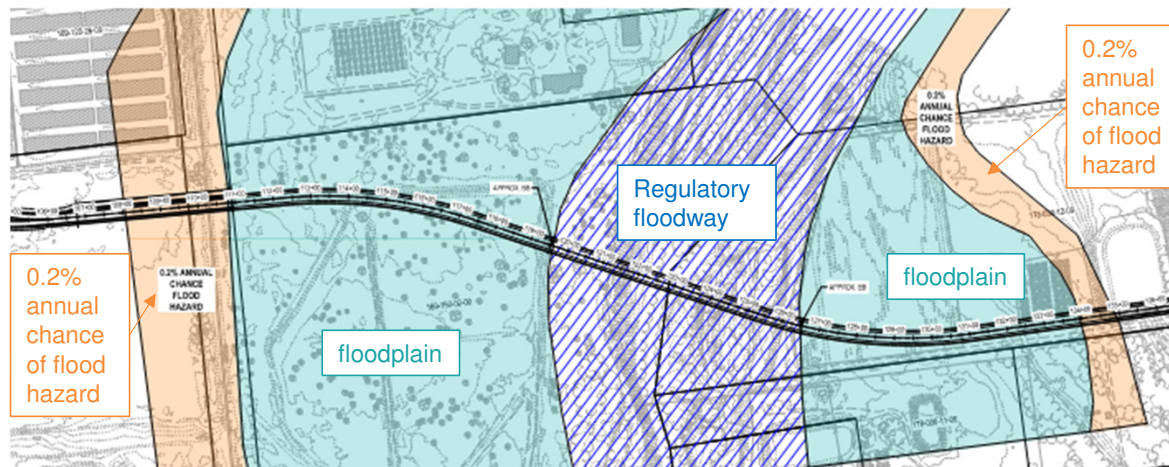
- Regional Transportation Goals and Economic Development
- Disaster Preparedness and Infrastructure Durability
- Emergency Access and Safety
- Connectivity and Community Well-being



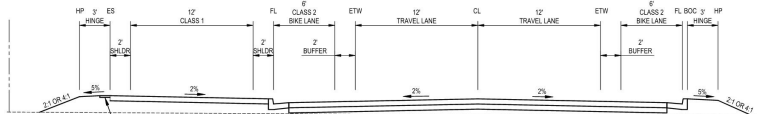
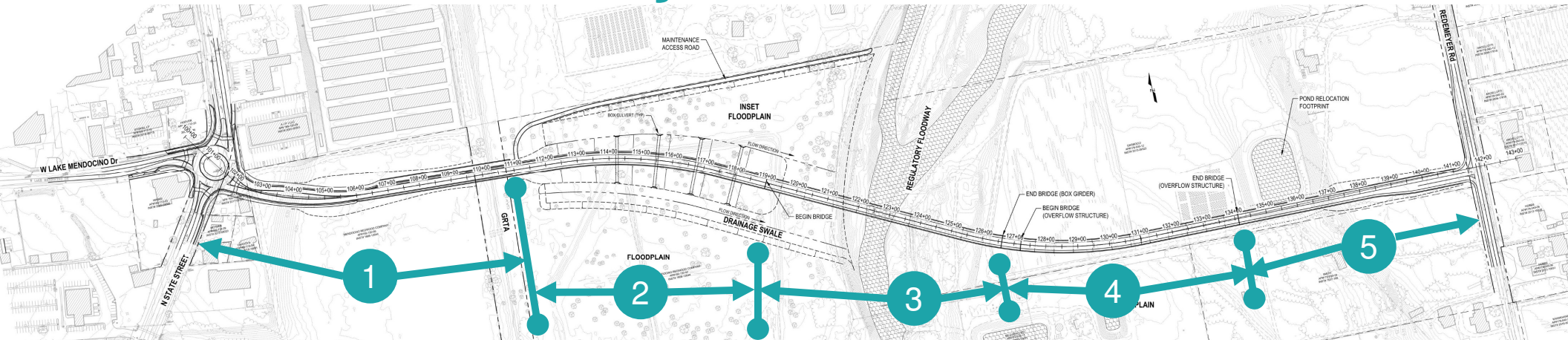
Selected Alignment



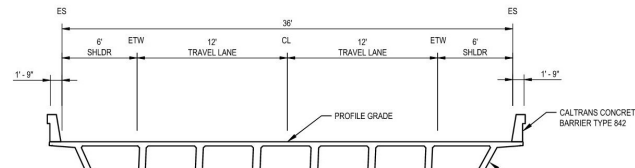
A significant portion of the project is in the Russian River Floodplain



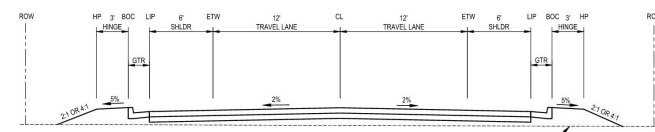
Roadway Cross Sections



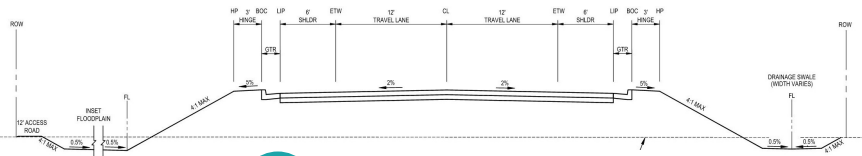
1 At Grade Roadway



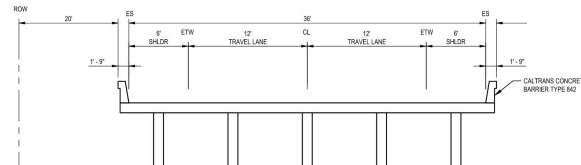
3 Bridge Over River



5 At Grade Roadway



2 Roadway on Fill



4 Overflow Structure
(Elevated Roadway Structure)

Questions?

The background of the slide is a dark, textured surface covered with numerous 3D question marks. Most of these question marks are in shades of gold and dark grey, creating a sense of depth and repetition. In the center of the image, a single, large, bright white question mark stands out prominently, drawing the viewer's eye.