

Golden Gate Bridge, Highway and Transportation District





COVID Impacts to Travel and Finances

Prior to the pandemic:

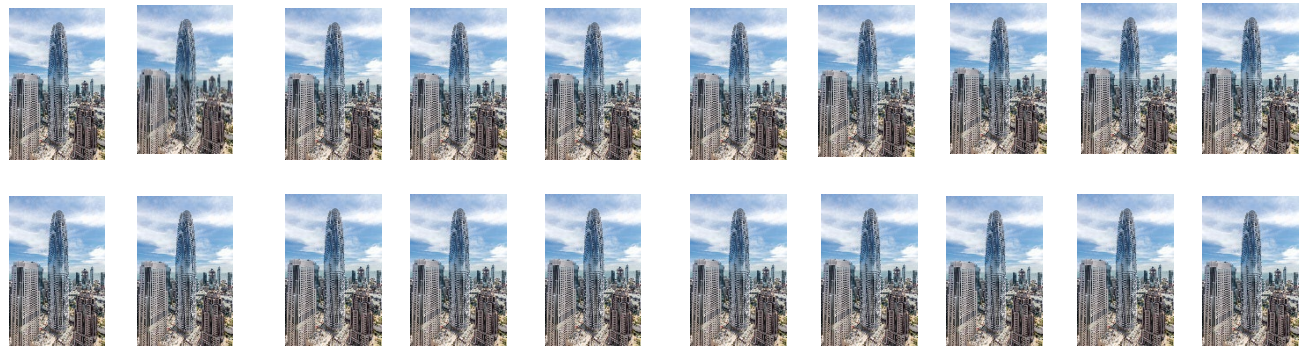
- Golden Gate Bridge Tolls were our largest source of funding for our bus and ferry service; and
- Transit Fares were our second largest source of funding for our transit service.



Downtown San Francisco

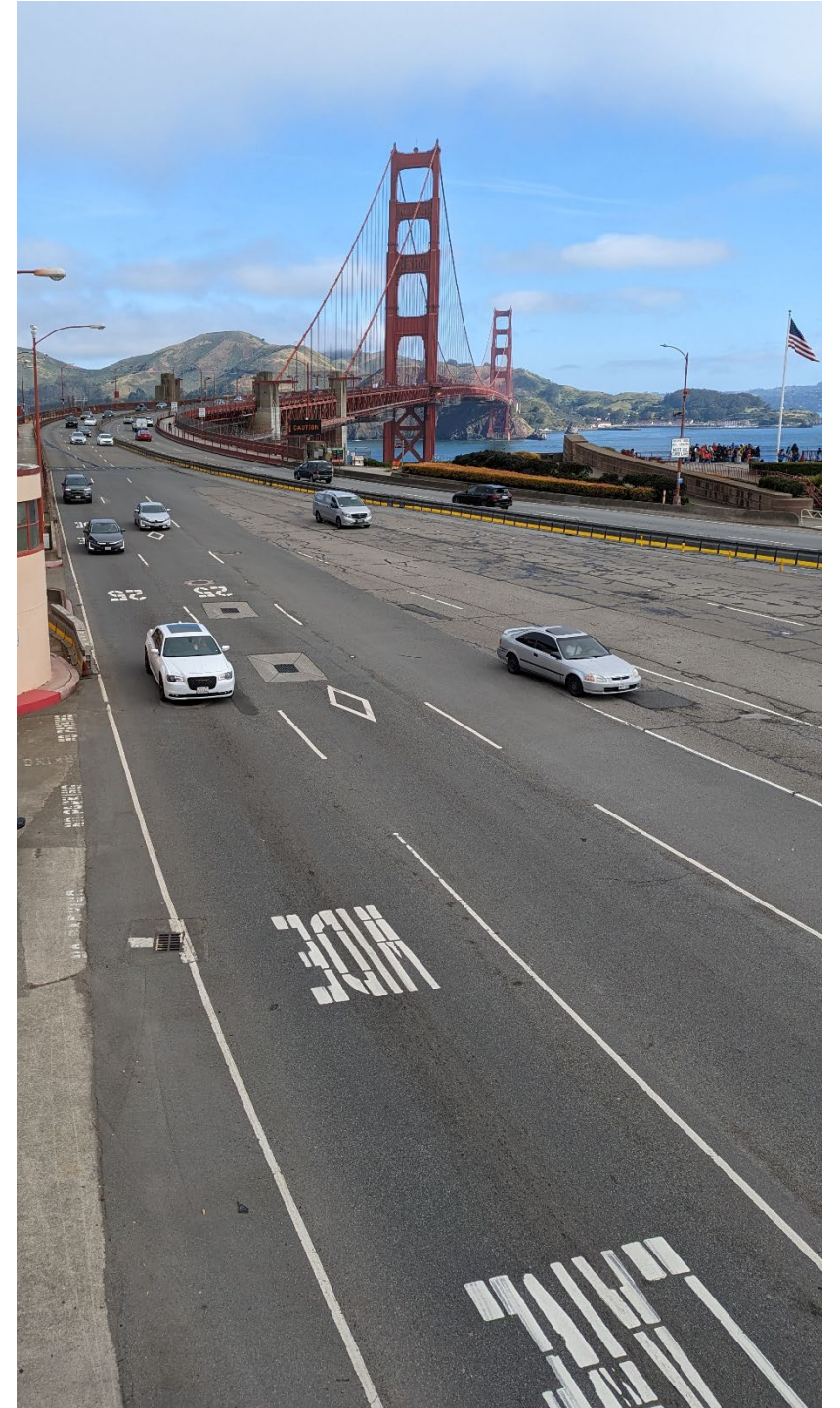
Today:

- There are 150,000 fewer people in downtown SF each weekday as compared to pre-pandemic;
- The amount of vacant office space in downtown San Francisco is equal to 20 Salesforce Towers



Travel in the Golden Gate Corridor

- Given the state of downtown SF, demand for Bridge, Bus and Ferry travel during *Commute* periods is way down.
- Today morning *Commute* Bridge Traffic (southbound 5:00-9:00 a.m.) is down about 25 percent.



The Drop in Commute Travel affects our Finances

Today - Revenues from Tolls & Transit Fares are down about \$900,000 each week, as compared to pre-pandemic.



Response to Reduced Demand

- *Overall* Bus Ridership is about 50% of pre-pandemic levels;
- Today the number of *Overall* Bus Trips provided is about 50% of pre-pandemic levels.



- *Express Commute Bus* ridership is 21% of pre-pandemic levels, while the number of *Express Commute Bus* trips is 16% of pre-pandemic levels;
- Providing most pre-pandemic *Regional Bus* trips (23 hours per day along Hwy 101 & RSR Bridge).



Response to Reduced Demand

- *Overall* Ferry Ridership is about 50% of pre-pandemic levels; so operating fewer trips.



Recreational & Tourist Travel Has Mostly Returned

During the pandemic we took over ferry service between Angel Island State Park & San Francisco.



Stretching our Federal COVID Relief Funding

- Today – through attrition – we have fewer staff which reduces our expenses;
- Today we employ about 100 fewer bus drivers as compared to pre-pandemic.



The Customer Service Business

The Bridge District continues to add back bus and ferry service incrementally and in a measured way as we see the return of our customers travelling in the Golden Gate Corridor.



Encouraging Trends

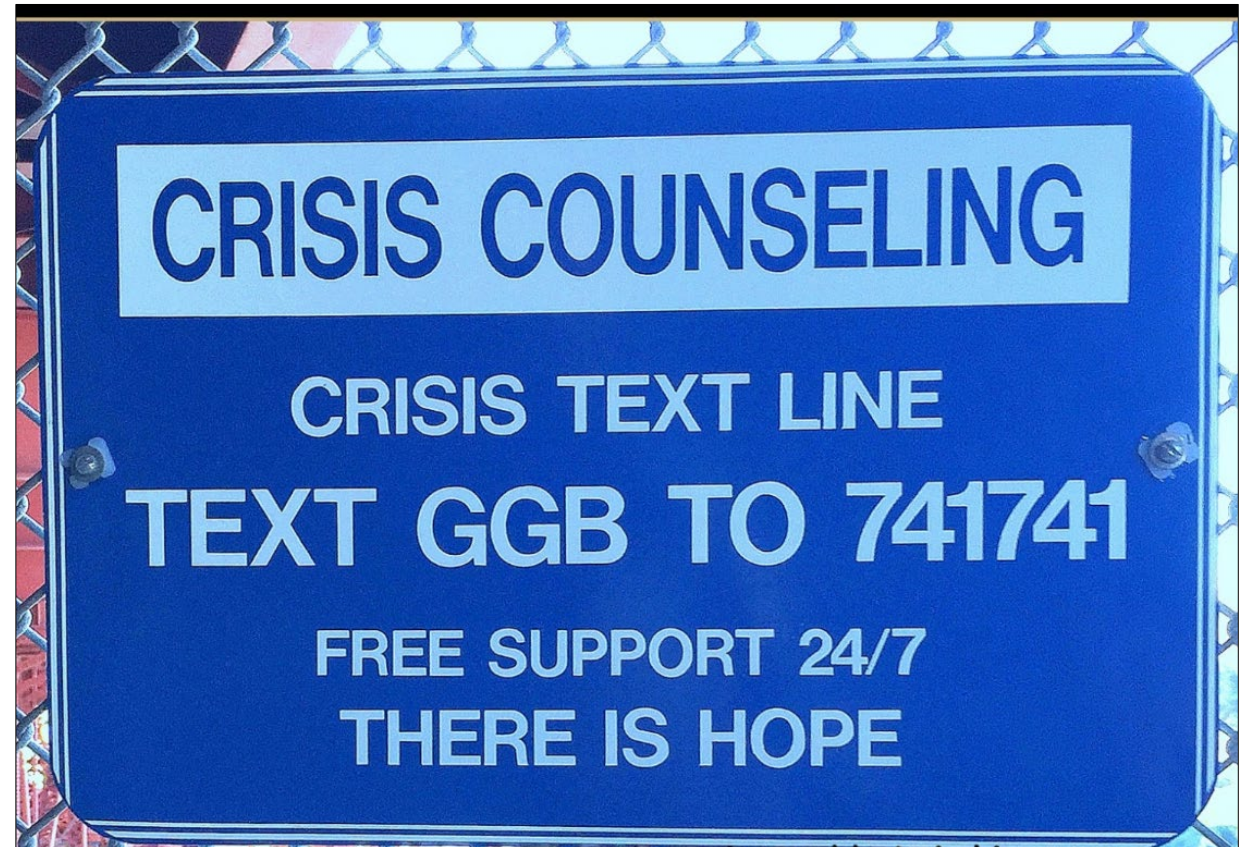
Fiscal year 2022/23 (July 1, 2022 - June 30, 2023) compared to the prior fiscal year (July 1, 2021 – June 30, 2022) shows:

- Bridge traffic was up 2.6 percent;
- Bus ridership was up 26.1 percent;
- Ferry ridership was up 67.4 percent.





Saving Lives at the Bridge





Golden Gate Bridge Suicide Deterrent Update

January 2024

Legend

- Net
- Fence
- Net and Fence



