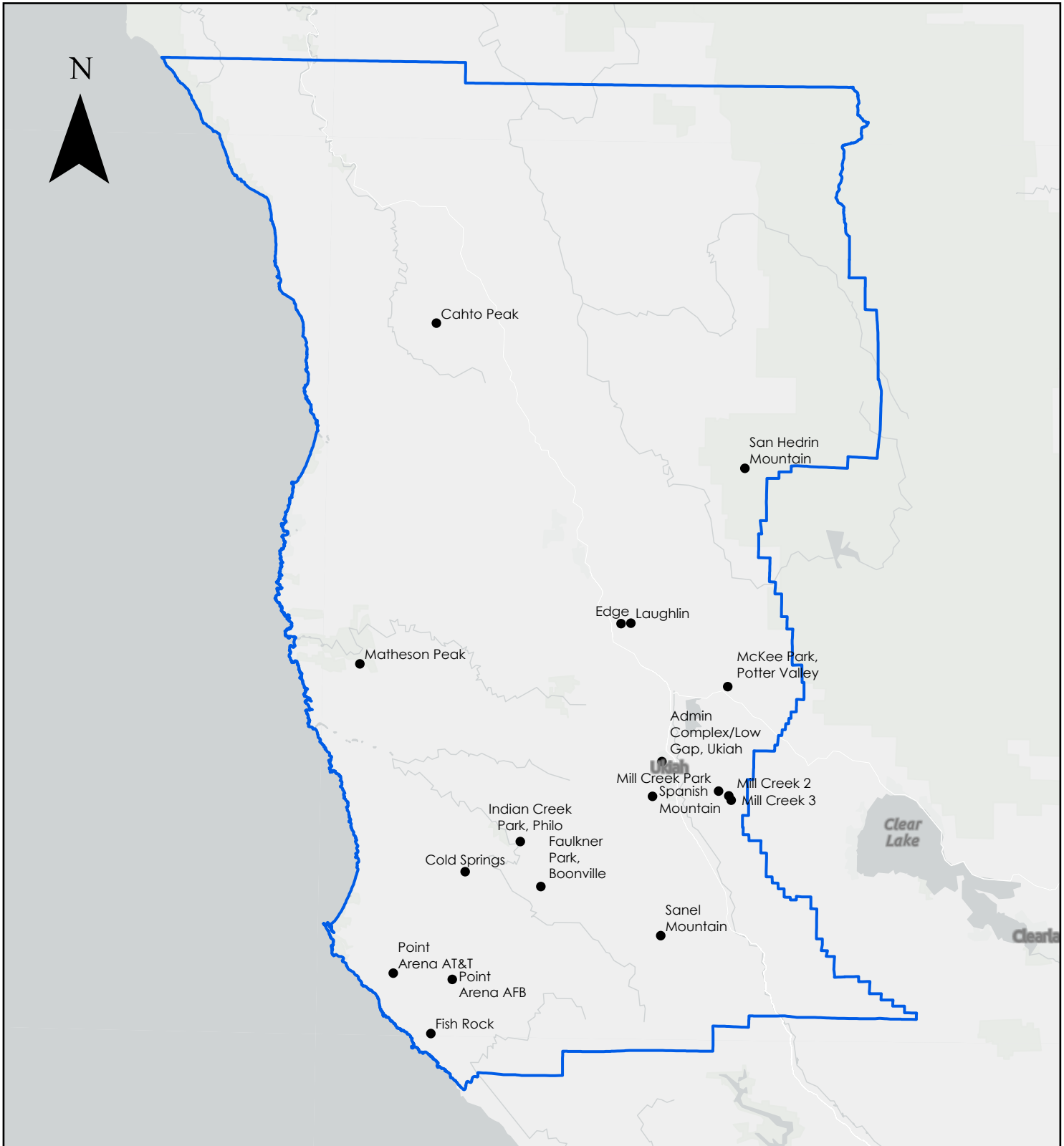
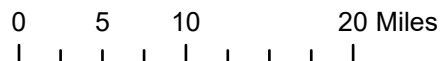


Mendocino County Community Fuels Reduction
and Capacity Building USFS CWDG 2023
October 2023

Location Map

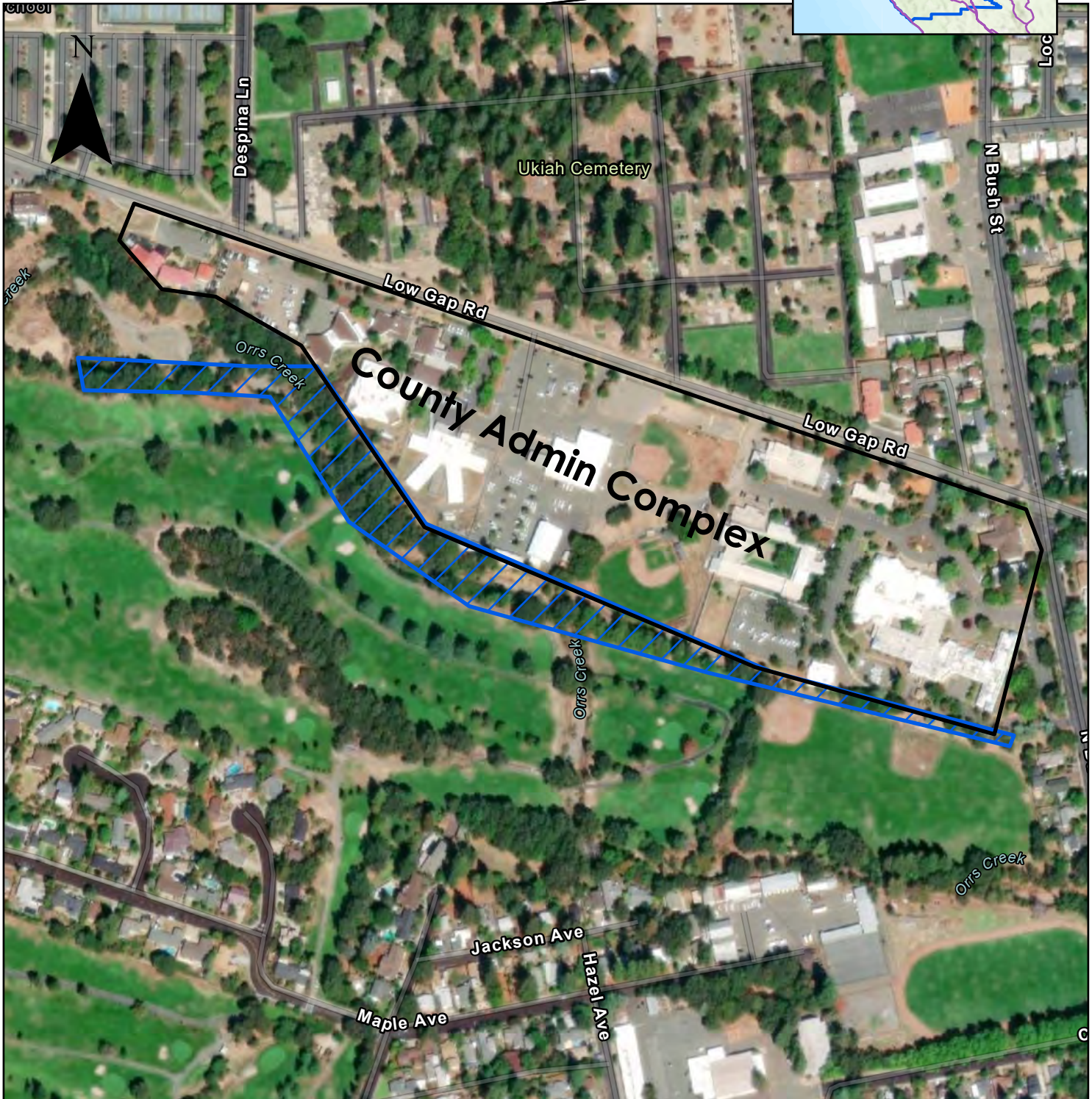
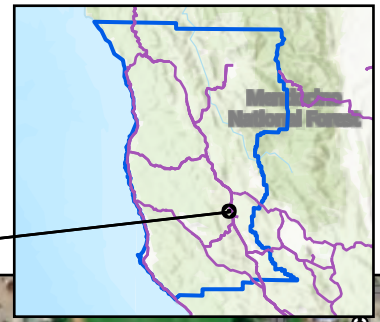


Map produced October 2023
Coordinate System: NAD 83, Calif. State Plane Zone II
Projection: Lambert Conformal Conic
US Census Bureau: 2015 American Community Survey
Aerial Imagery: US Dept. of Agriculture/ArcGIS Online mosaic
Topographic Data: USGS 7.5 minute quad series Mount Diablo Base & Meridian
All spatial data is approximate. This map is not a substitute for a proper land survey



Mendocino County Community Fuels Reduction
and Capacity Building USFS CWDG 2023
October 2023

Admin Complex, Ukiah



Map produced October 2023
Coordinate System: NAD 83, Calif. State Plane Zone II
Projection: Lambert Conformal Conic
US Census Bureau: 2015 American Community Survey
Aerial Imagery: US Dept. of Agriculture/ArcGIS Online mosaic
Topographic Data: USGS 7.5 minute quad series Mount Diablo Base & Meridian
All spatial data is approximate. This map is not a substitute for a proper land survey



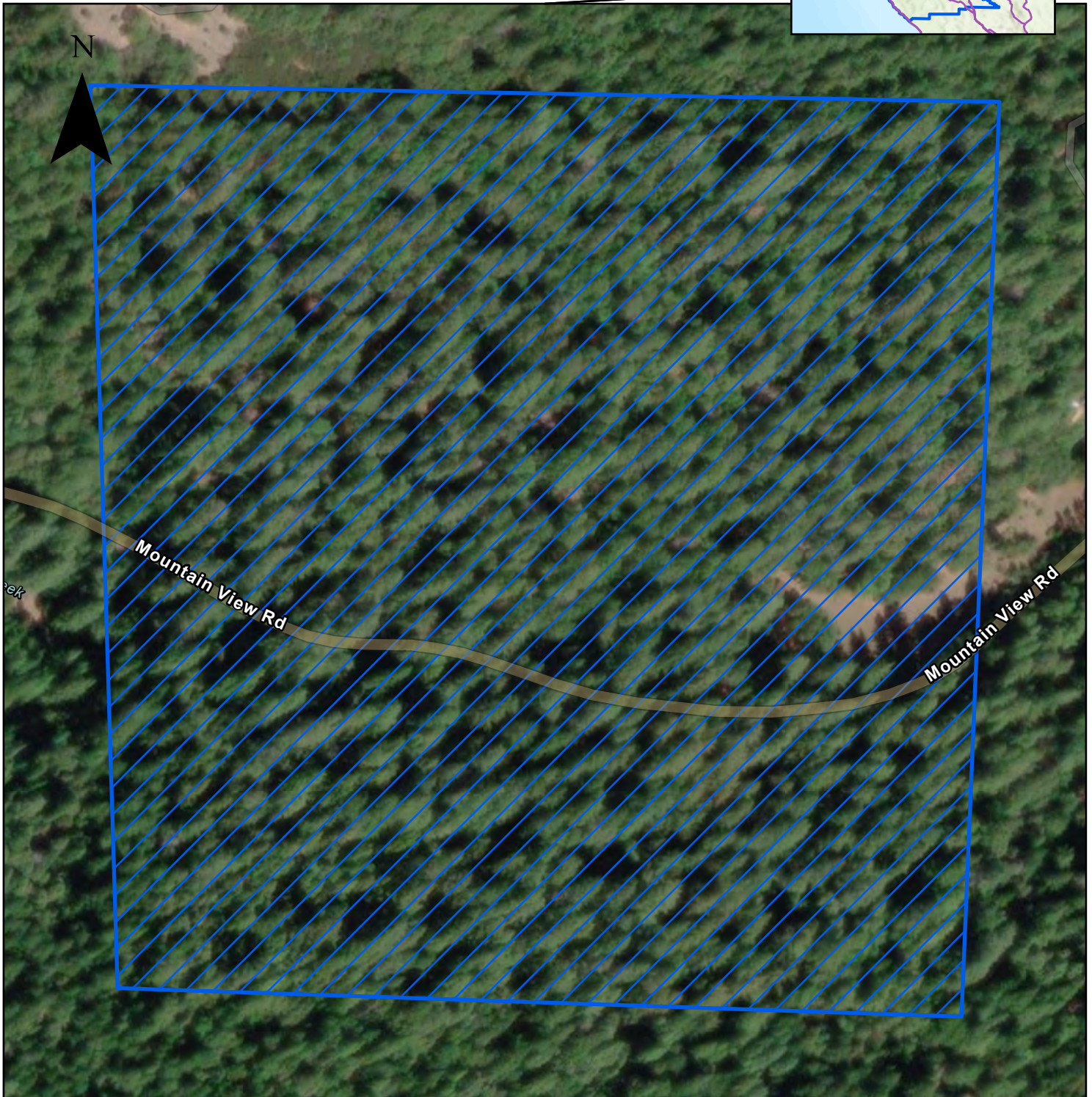
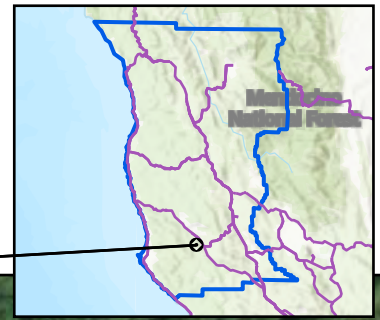
Fuels Treatment Area



**THIS MAP AND DATA ARE PROVIDED WITHOUT WARRANTY OF ANY KIND.
DO NOT USE THIS MAP TO DETERMINE LEGAL PROPERTY BOUNDARIES**

Mendocino County Community Fuels Reduction
and Capacity Building USFS CWDG 2023
October 2023

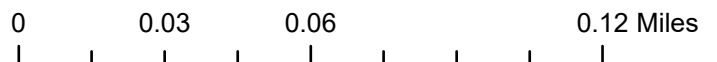
Faulkner Park, Boonville



Map produced October 2023
Coordinate System: NAD 83, Calif. State Plane Zone II
Projection: Lambert Conformal Conic
US Census Bureau: 2015 American Community Survey
Aerial Imagery: US Dept. of Agriculture/ArcGIS Online mosaic
Topographic Data: USGS 7.5 minute quad series Mount Diablo Base & Meridian
All spatial data is approximate. This map is not a substitute for a proper land survey



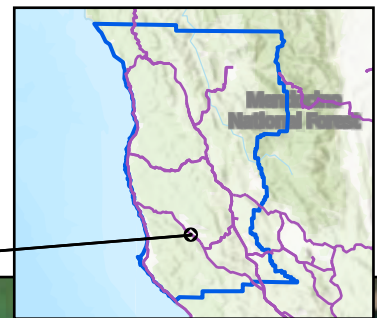
Fuels Treatment Area



**THIS MAP AND DATA ARE PROVIDED WITHOUT WARRANTY OF ANY KIND.
DO NOT USE THIS MAP TO DETERMINE LEGAL PROPERTY BOUNDARIES**

Mendocino County Community Fuels Reduction
and Capacity Building USFS CWDG 2023
October 2023

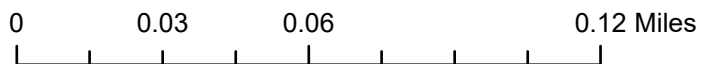
Indian Creek Park, Philo



Map produced October 2023
Coordinate System: NAD 83, Calif. State Plane Zone II
Projection: Lambert Conformal Conic
US Census Bureau: 2015 American Community Survey
Aerial Imagery: US Dept. of Agriculture/ArcGIS Online mosaic
Topographic Data: USGS 7.5 minute quad series Mount Diablo Base & Meridian
All spatial data is approximate. This map is not a substitute for a proper land survey



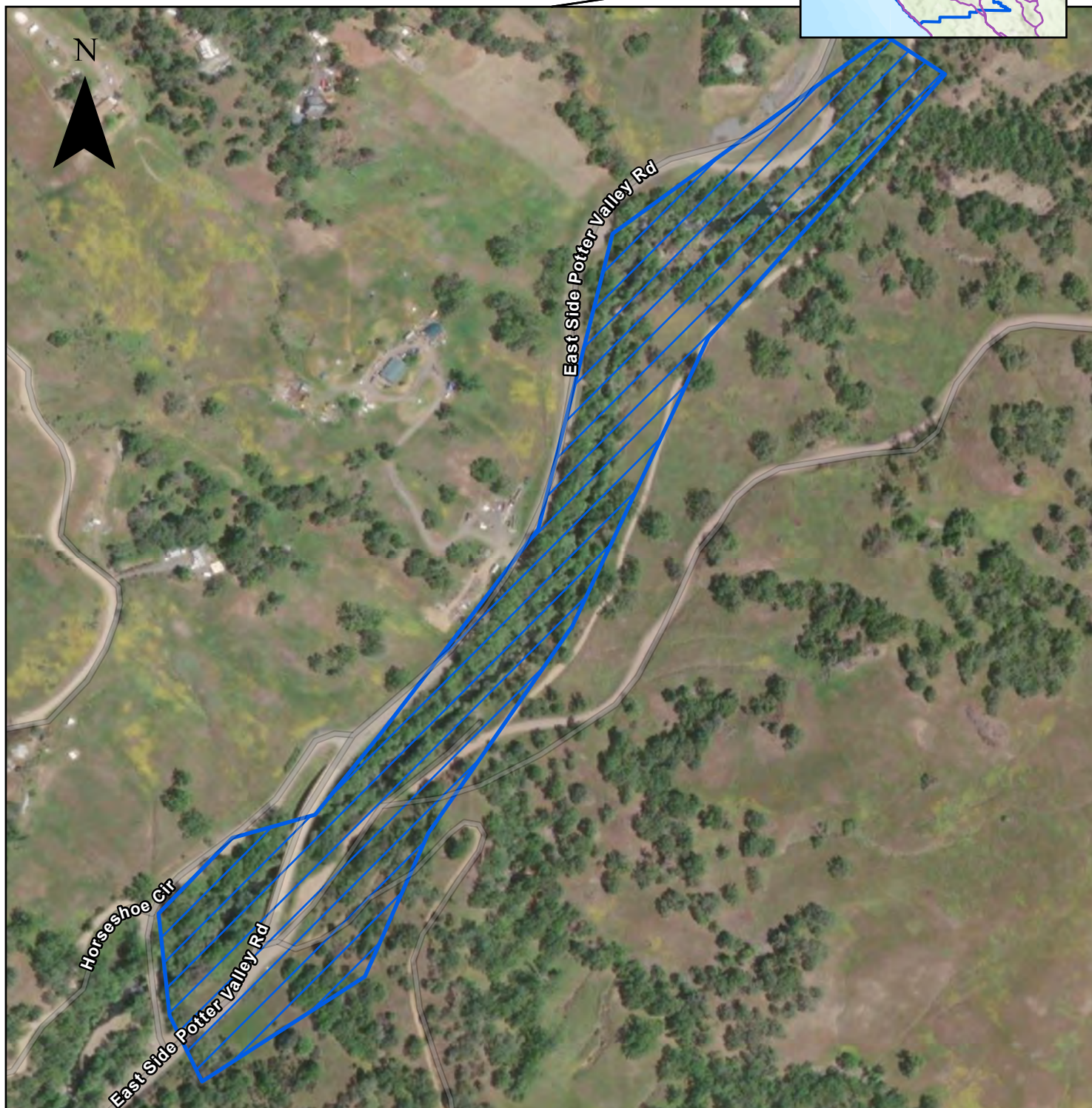
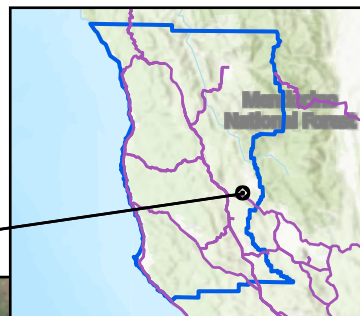
Fuels Treatment Area



**THIS MAP AND DATA ARE PROVIDED WITHOUT WARRANTY OF ANY KIND.
DO NOT USE THIS MAP TO DETERMINE LEGAL PROPERTY BOUNDARIES**

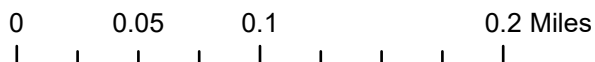
Mendocino County Community Fuels Reduction
and Capacity Building USFS CWDG 2023
October 2023

McKee Park, Potter Valley



Map produced October 2023
Coordinate System: NAD 83, Calif. State Plane Zone II
Projection: Lambert Conformal Conic
US Census Bureau: 2015 American Community Survey
Aerial Imagery: US Dept. of Agriculture/ArcGIS Online mosaic
Topographic Data: USGS 7.5 minute quad series Mount Diablo Base & Meridian
All spatial data is approximate. This map is not a substitute for a proper land survey

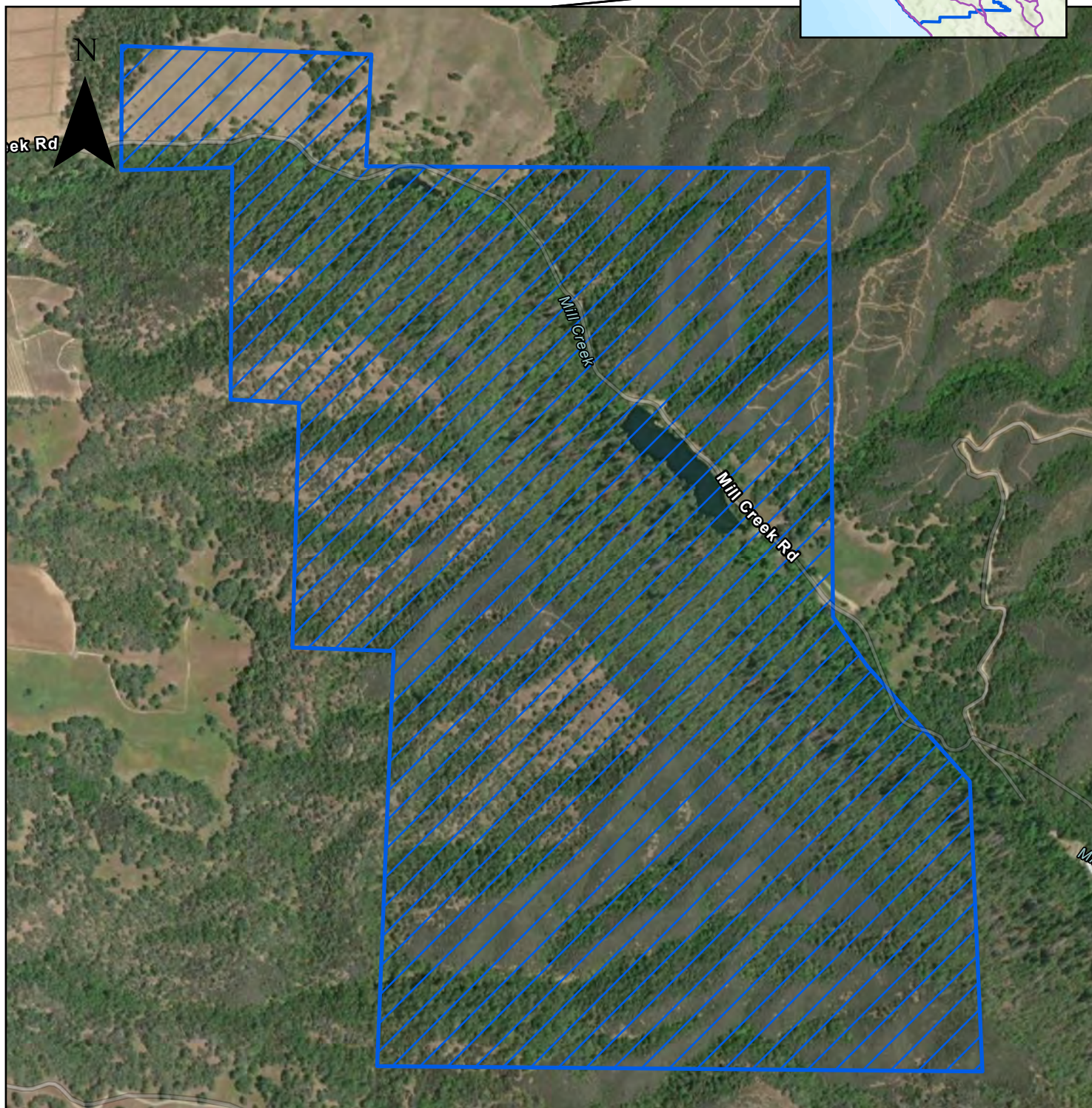
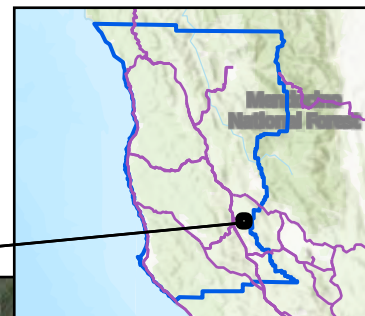
 Fuels Treatment Area



**THIS MAP AND DATA ARE PROVIDED WITHOUT WARRANTY OF ANY KIND.
DO NOT USE THIS MAP TO DETERMINE LEGAL PROPERTY BOUNDARIES**

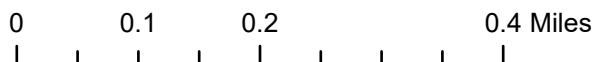
Mendocino County Community Fuels Reduction
and Capacity Building USFS CWDG 2023
October 2023

Mill Creek Park



Map produced October 2023
Coordinate System: NAD 83, Calif. State Plane Zone II
Projection: Lambert Conformal Conic
US Census Bureau: 2015 American Community Survey
Aerial Imagery: US Dept. of Agriculture/ArcGIS Online mosaic
Topographic Data: USGS 7.5 minute quad series Mount Diablo Base & Meridian
All spatial data is approximate. This map is not a substitute for a proper land survey

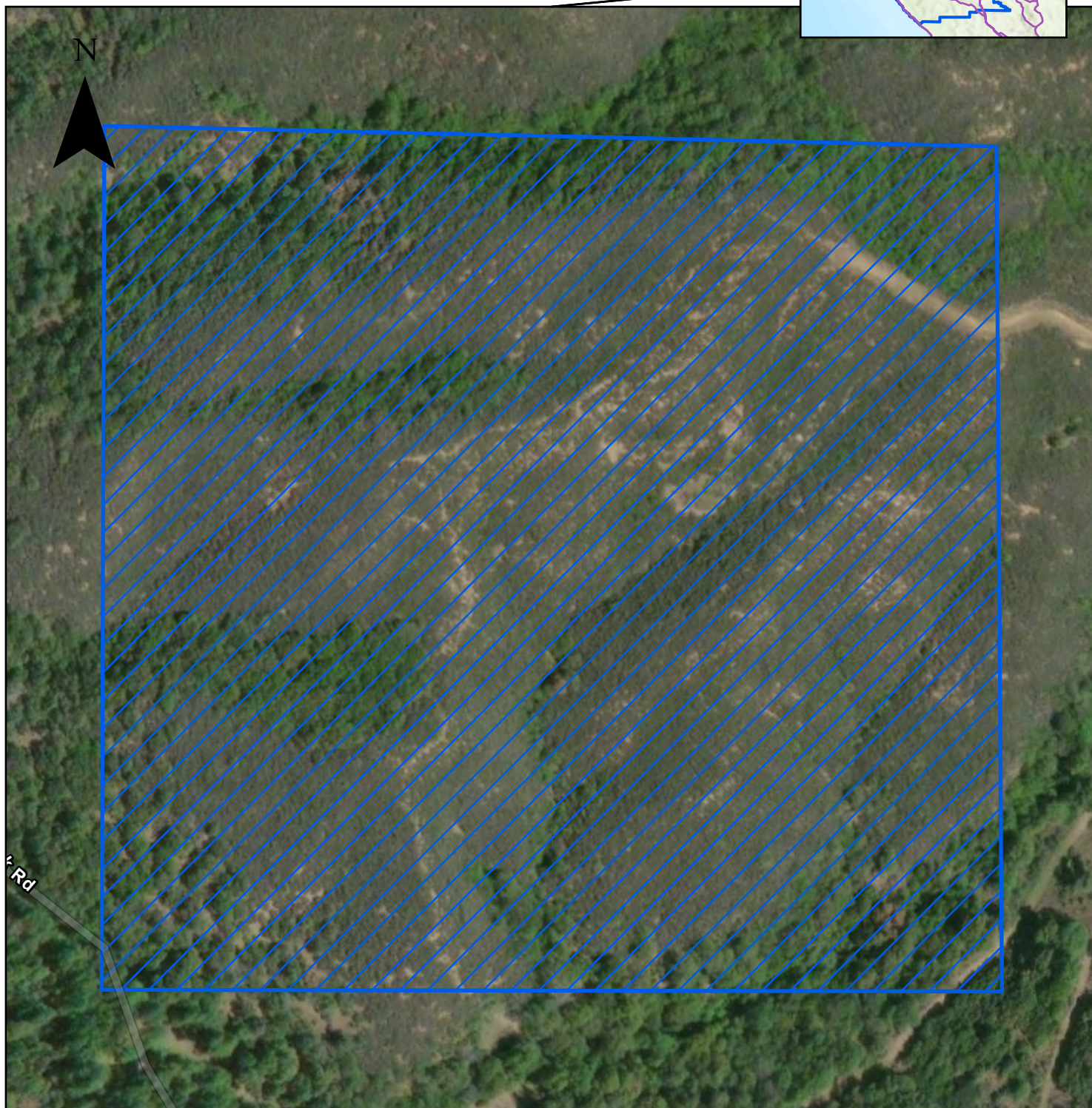
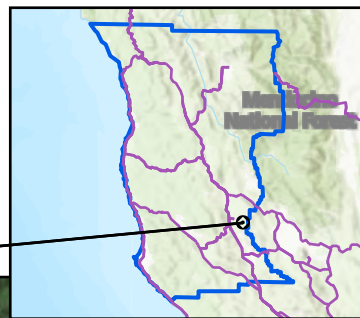
 Fuels Treatment Area



**THIS MAP AND DATA ARE PROVIDED WITHOUT WARRANTY OF ANY KIND.
DO NOT USE THIS MAP TO DETERMINE LEGAL PROPERTY BOUNDARIES**

Mendocino County Community Fuels Reduction
and Capacity Building USFS CWDG 2023
October 2023

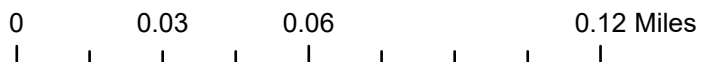
Mill Creek 2



Map produced October 2023
Coordinate System: NAD 83, Calif. State Plane Zone II
Projection: Lambert Conformal Conic
US Census Bureau: 2015 American Community Survey
Aerial Imagery: US Dept. of Agriculture/ArcGIS Online mosaic
Topographic Data: USGS 7.5 minute quad series Mount Diablo Base & Meridian
All spatial data is approximate. This map is not a substitute for a proper land survey



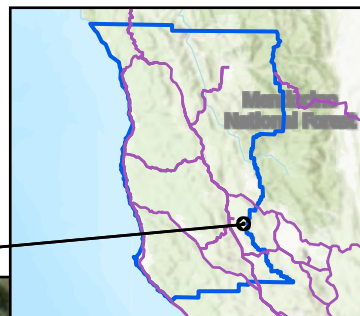
Fuels Treatment Area



**THIS MAP AND DATA ARE PROVIDED WITHOUT WARRANTY OF ANY KIND.
DO NOT USE THIS MAP TO DETERMINE LEGAL PROPERTY BOUNDARIES**

Mendocino County Community Fuels Reduction
and Capacity Building USFS CWDG 2023
October 2023

Mill Creek 3



Map produced October 2023
Coordinate System: NAD 83, Calif. State Plane Zone II
Projection: Lambert Conformal Conic
US Census Bureau: 2015 American Community Survey
Aerial Imagery: US Dept. of Agriculture/ArcGIS Online mosaic
Topographic Data: USGS 7.5 minute quad series Mount Diablo Base & Meridian
All spatial data is approximate. This map is not a substitute for a proper land survey



Fuels Treatment Area



**THIS MAP AND DATA ARE PROVIDED WITHOUT WARRANTY OF ANY KIND.
DO NOT USE THIS MAP TO DETERMINE LEGAL PROPERTY BOUNDARIES**

Mendocino County Community Fuels Reduction
and Capacity Building USFS CWDG 2023
October 2023

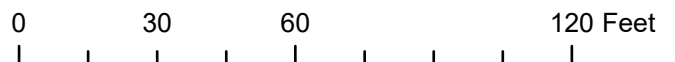
Cahto Peak



Map produced October 2023
Coordinate System: NAD 83, Calif. State Plane Zone II
Projection: Lambert Conformal Conic
US Census Bureau: 2015 American Community Survey
Aerial Imagery: US Dept. of Agriculture/ArcGIS Online mosaic
Topographic Data: USGS 7.5 minute quad series Mount Diablo Base & Meridian
All spatial data is approximate. This map is not a substitute for a proper land survey



Fuels Treatment Area



**THIS MAP AND DATA ARE PROVIDED WITHOUT WARRANTY OF ANY KIND.
DO NOT USE THIS MAP TO DETERMINE LEGAL PROPERTY BOUNDARIES**

Mendocino County Community Fuels Reduction
and Capacity Building USFS CWDG 2023
October 2023

Cold Springs



Map produced October 2023
Coordinate System: NAD 83, Calif. State Plane Zone II
Projection: Lambert Conformal Conic
US Census Bureau: 2015 American Community Survey
Aerial Imagery: US Dept. of Agriculture/ArcGIS Online mosaic
Topographic Data: USGS 7.5 minute quad series Mount Diablo Base & Meridian
All spatial data is approximate. This map is not a substitute for a proper land survey

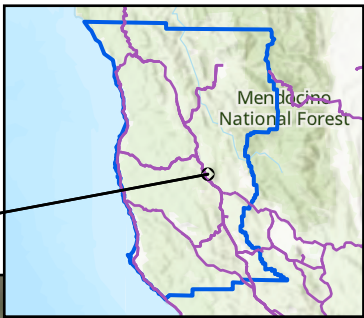


Fuels Treatment Area



**THIS MAP AND DATA ARE PROVIDED WITHOUT WARRANTY OF ANY KIND.
DO NOT USE THIS MAP TO DETERMINE LEGAL PROPERTY BOUNDARIES**

Mendocino County Community Fuels Reduction and Capacity Building USFS CWDG 2023 October 2023



Edge



Map produced October 2023
Coordinate System: NAD 83, Calif. State Plane Zone II
Projection: Lambert Conformal Conic
US Census Bureau: 2015 American Community Survey
Aerial Imagery: US Dept. of Agriculture/ArcGIS Online mosaic
Topographic Data: USGS 7.5 minute quad series Mount Diablo Base & Meridian
All spatial data is approximate. This map is not a substitute for a proper land survey

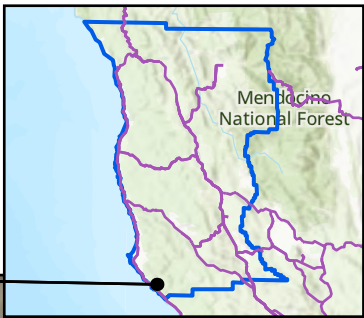


Fuels Treatment Area



**THIS MAP AND DATA ARE PROVIDED WITHOUT WARRANTY OF ANY KIND.
DO NOT USE THIS MAP TO DETERMINE LEGAL PROPERTY BOUNDARIES**

Mendocino County Community Fuels Reduction
and Capacity Building USFS CWDG 2023
October 2023

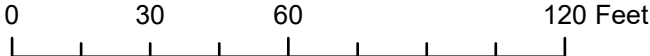


Fish Rock



Map produced October 2023
Coordinate System: NAD 83, Calif. State Plane Zone II
Projection: Lambert Conformal Conic
US Census Bureau: 2015 American Community Survey
Aerial Imagery: US Dept. of Agriculture/ArcGIS Online mosaic
Topographic Data: USGS 7.5 minute quad series Mount Diablo Base & Meridian
All spatial data is approximate. This map is not a substitute for a proper land survey

 Fuels Treatment Area



**THIS MAP AND DATA ARE PROVIDED WITHOUT WARRANTY OF ANY KIND.
DO NOT USE THIS MAP TO DETERMINE LEGAL PROPERTY BOUNDARIES**

Mendocino County Community Fuels Reduction
and Capacity Building USFS CWDG 2023
October 2023

Laughlin



Map produced October 2023
Coordinate System: NAD 83, Calif. State Plane Zone II
Projection: Lambert Conformal Conic
US Census Bureau: 2015 American Community Survey
Aerial Imagery: US Dept. of Agriculture/ArcGIS Online mosaic
Topographic Data: USGS 7.5 minute quad series Mount Diablo Base & Meridian
All spatial data is approximate. This map is not a substitute for a proper land survey



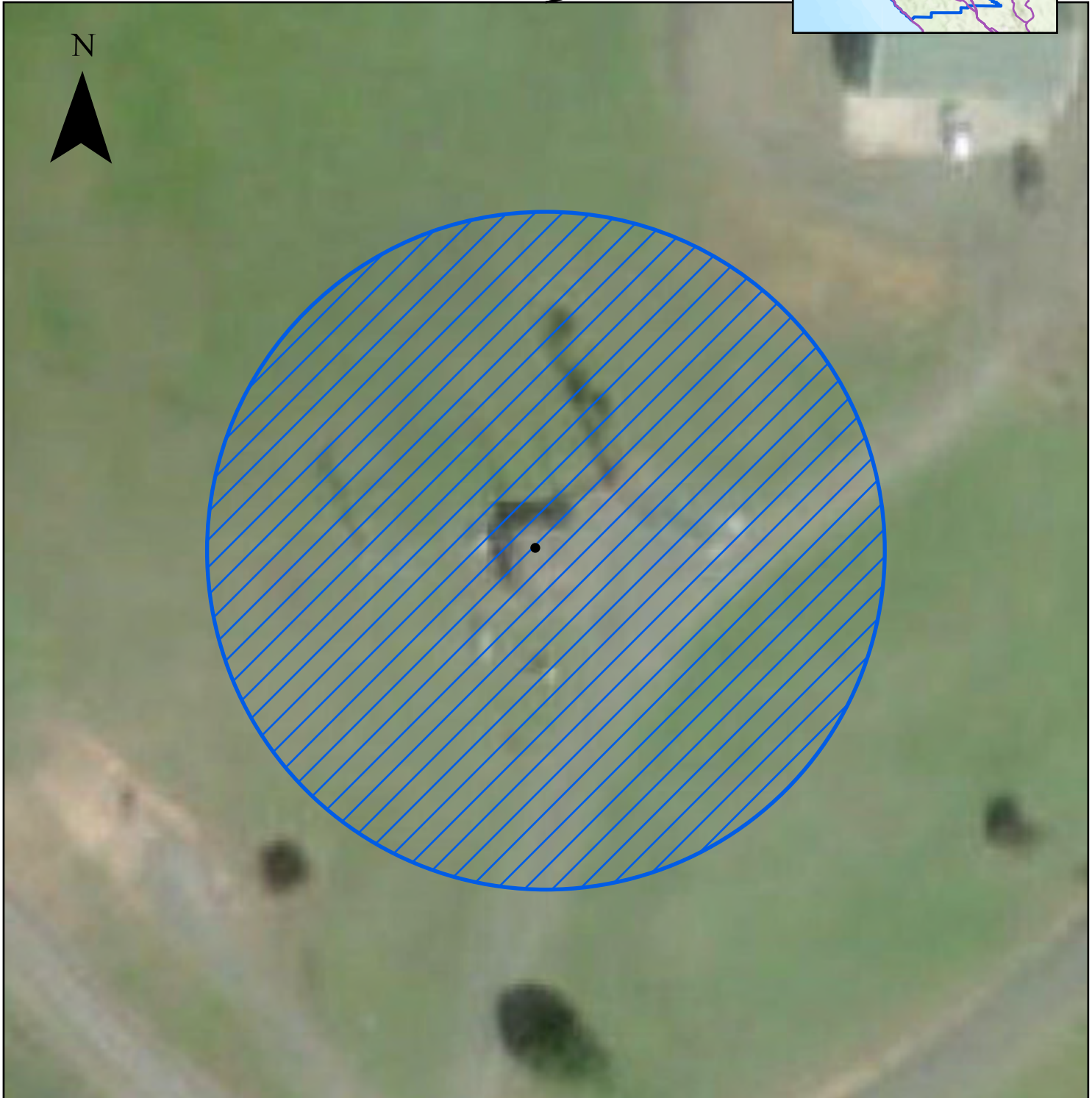
Fuels Treatment Area



**THIS MAP AND DATA ARE PROVIDED WITHOUT WARRANTY OF ANY KIND.
DO NOT USE THIS MAP TO DETERMINE LEGAL PROPERTY BOUNDARIES**

Mendocino County Community Fuels Reduction
and Capacity Building USFS CWDG 2023
October 2023

Matheson Peak



Map produced October 2023
Coordinate System: NAD 83, Calif. State Plane Zone II
Projection: Lambert Conformal Conic
US Census Bureau: 2015 American Community Survey
Aerial Imagery: US Dept. of Agriculture/ArcGIS Online mosaic
Topographic Data: USGS 7.5 minute quad series Mount Diablo Base & Meridian
All spatial data is approximate. This map is not a substitute for a proper land survey



Fuels Treatment Area



**THIS MAP AND DATA ARE PROVIDED WITHOUT WARRANTY OF ANY KIND.
DO NOT USE THIS MAP TO DETERMINE LEGAL PROPERTY BOUNDARIES**

Mendocino County Community Fuels Reduction
and Capacity Building USFS CWDG 2023
October 2023

Point Arena AFB



Map produced October 2023
Coordinate System: NAD 83, Calif. State Plane Zone II
Projection: Lambert Conformal Conic
US Census Bureau: 2015 American Community Survey
Aerial Imagery: US Dept. of Agriculture/ArcGIS Online mosaic
Topographic Data: USGS 7.5 minute quad series Mount Diablo Base & Meridian
All spatial data is approximate. This map is not a substitute for a proper land survey



Fuels Treatment Area



**THIS MAP AND DATA ARE PROVIDED WITHOUT WARRANTY OF ANY KIND.
DO NOT USE THIS MAP TO DETERMINE LEGAL PROPERTY BOUNDARIES**

Mendocino County Community Fuels Reduction
and Capacity Building USFS CWDG 2023
October 2023

Point Arena AT&T



Map produced October 2023
Coordinate System: NAD 83, Calif. State Plane Zone II
Projection: Lambert Conformal Conic
US Census Bureau: 2015 American Community Survey
Aerial Imagery: US Dept. of Agriculture/ArcGIS Online mosaic
Topographic Data: USGS 7.5 minute quad series Mount Diablo Base & Meridian
All spatial data is approximate. This map is not a substitute for a proper land survey



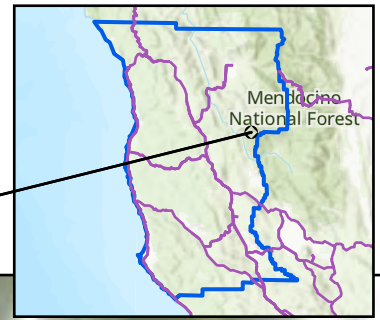
Fuels Treatment Area



**THIS MAP AND DATA ARE PROVIDED WITHOUT WARRANTY OF ANY KIND.
DO NOT USE THIS MAP TO DETERMINE LEGAL PROPERTY BOUNDARIES**

Mendocino County Community Fuels Reduction
and Capacity Building USFS CWDG 2023
October 2023

San Hedrin Mountain



Map produced October 2023
Coordinate System: NAD 83, Calif. State Plane Zone II
Projection: Lambert Conformal Conic
US Census Bureau: 2015 American Community Survey
Aerial Imagery: US Dept. of Agriculture/ArcGIS Online mosaic
Topographic Data: USGS 7.5 minute quad series Mount Diablo Base & Meridian
All spatial data is approximate. This map is not a substitute for a proper land survey



Fuels Treatment Area



**THIS MAP AND DATA ARE PROVIDED WITHOUT WARRANTY OF ANY KIND.
DO NOT USE THIS MAP TO DETERMINE LEGAL PROPERTY BOUNDARIES**

Mendocino County Community Fuels Reduction
and Capacity Building USFS CWDG 2023
October 2023

Sanel Mountain



Map produced October 2023
Coordinate System: NAD 83, Calif. State Plane Zone II
Projection: Lambert Conformal Conic
US Census Bureau: 2015 American Community Survey
Aerial Imagery: US Dept. of Agriculture/ArcGIS Online mosaic
Topographic Data: USGS 7.5 minute quad series Mount Diablo Base & Meridian
All spatial data is approximate. This map is not a substitute for a proper land survey



Fuels Treatment Area



**THIS MAP AND DATA ARE PROVIDED WITHOUT WARRANTY OF ANY KIND.
DO NOT USE THIS MAP TO DETERMINE LEGAL PROPERTY BOUNDARIES**

Mendocino County Community Fuels Reduction
and Capacity Building USFS CWDG 2023
October 2023

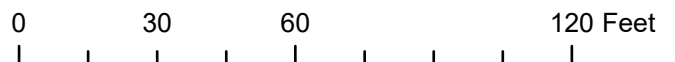
Spanish Mountain



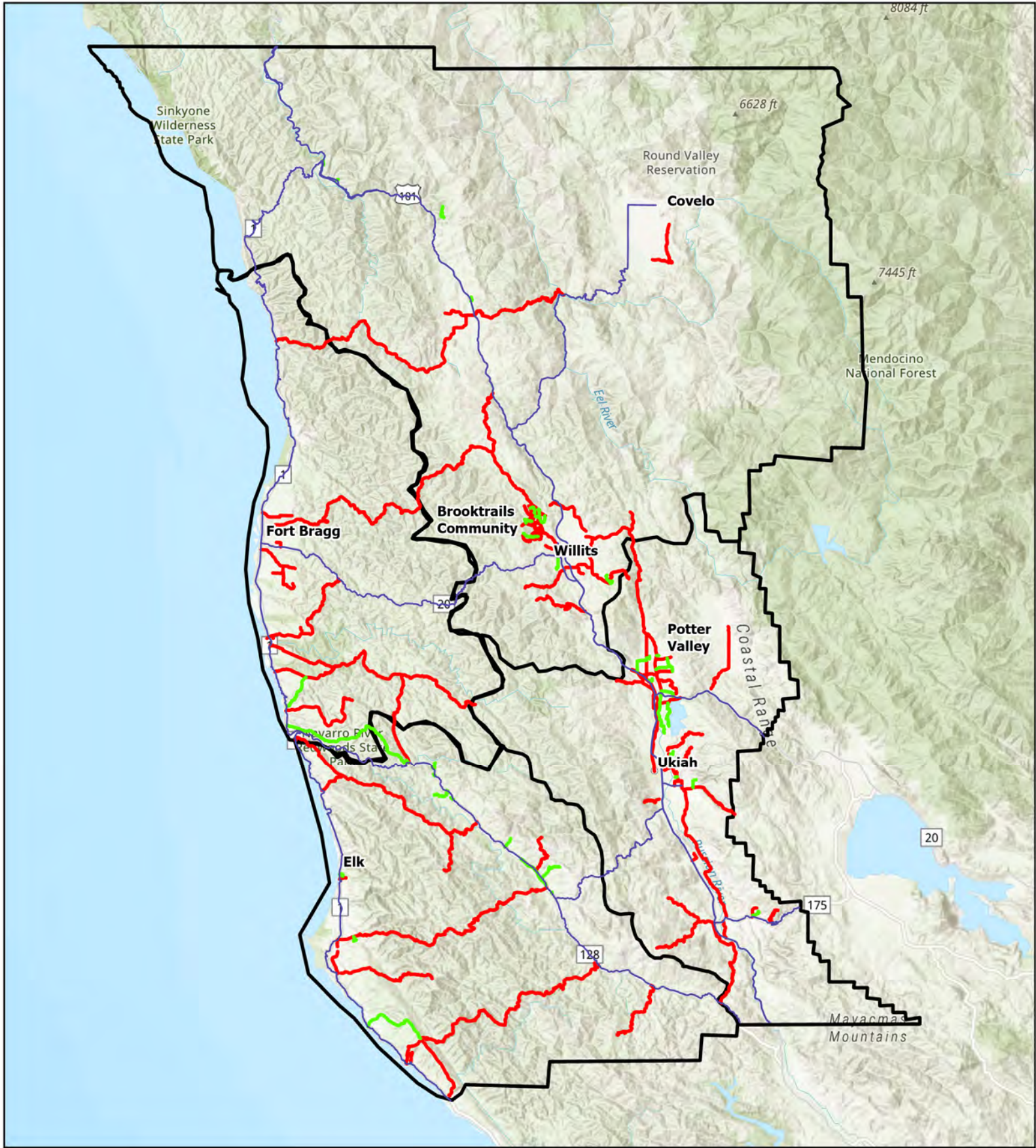
Map produced October 2023
Coordinate System: NAD 83, Calif. State Plane Zone II
Projection: Lambert Conformal Conic
US Census Bureau: 2015 American Community Survey
Aerial Imagery: US Dept. of Agriculture/ArcGIS Online mosaic
Topographic Data: USGS 7.5 minute quad series Mount Diablo Base & Meridian
All spatial data is approximate. This map is not a substitute for a proper land survey



Fuels Treatment Area

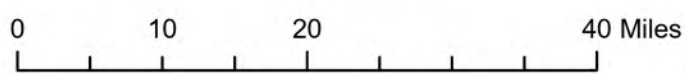


**THIS MAP AND DATA ARE PROVIDED WITHOUT WARRANTY OF ANY KIND.
DO NOT USE THIS MAP TO DETERMINE LEGAL PROPERTY BOUNDARIES**



- Primary Roads
- Secondary Roads
- California Highways

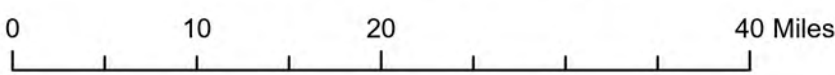
2023 Evacuation Routes of Primary Concern

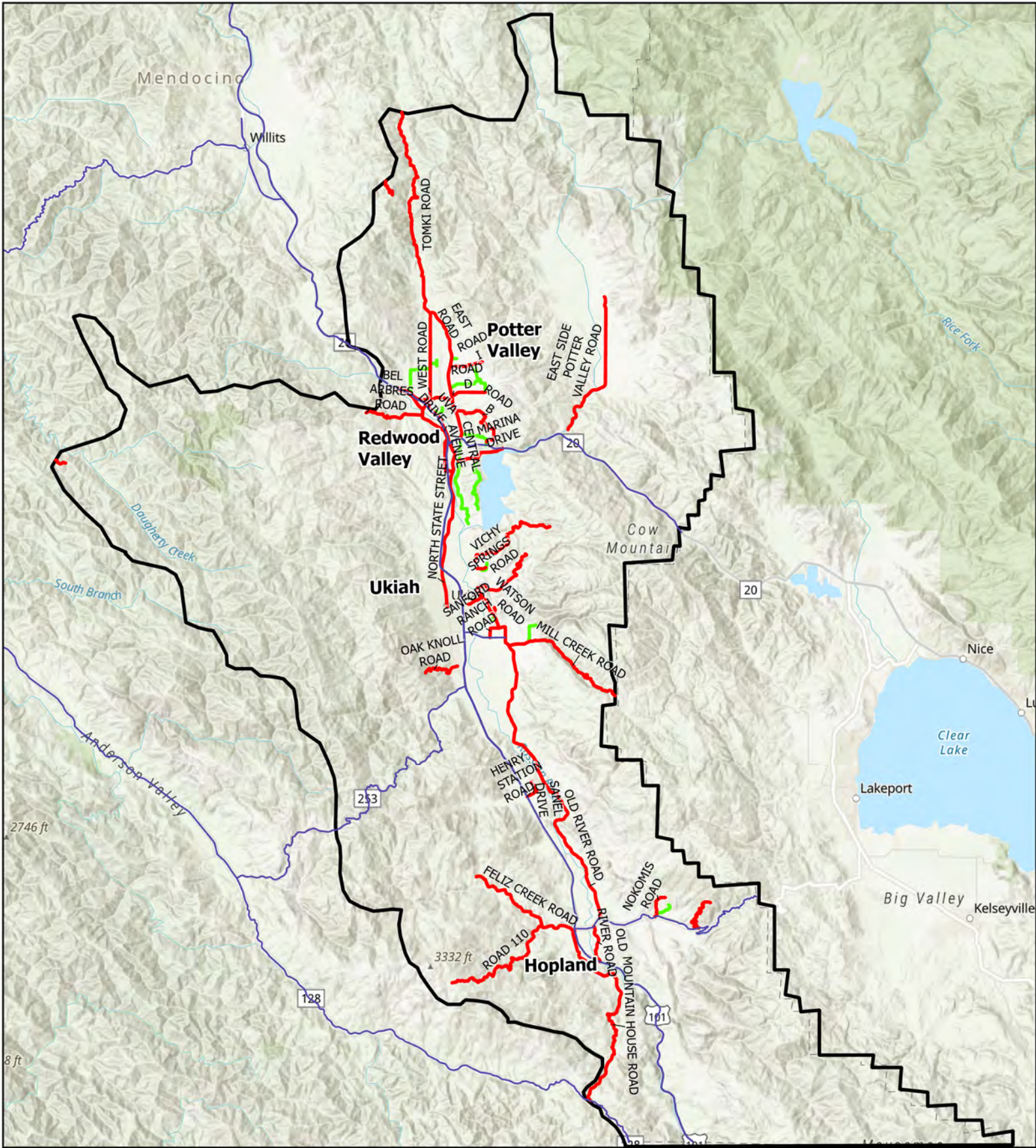




- Primary Roads Area 1
- Secondary Roads Area 1
- California Highways

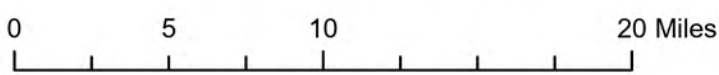
2023 Evacuation Routes of Primary Concern: Area 1

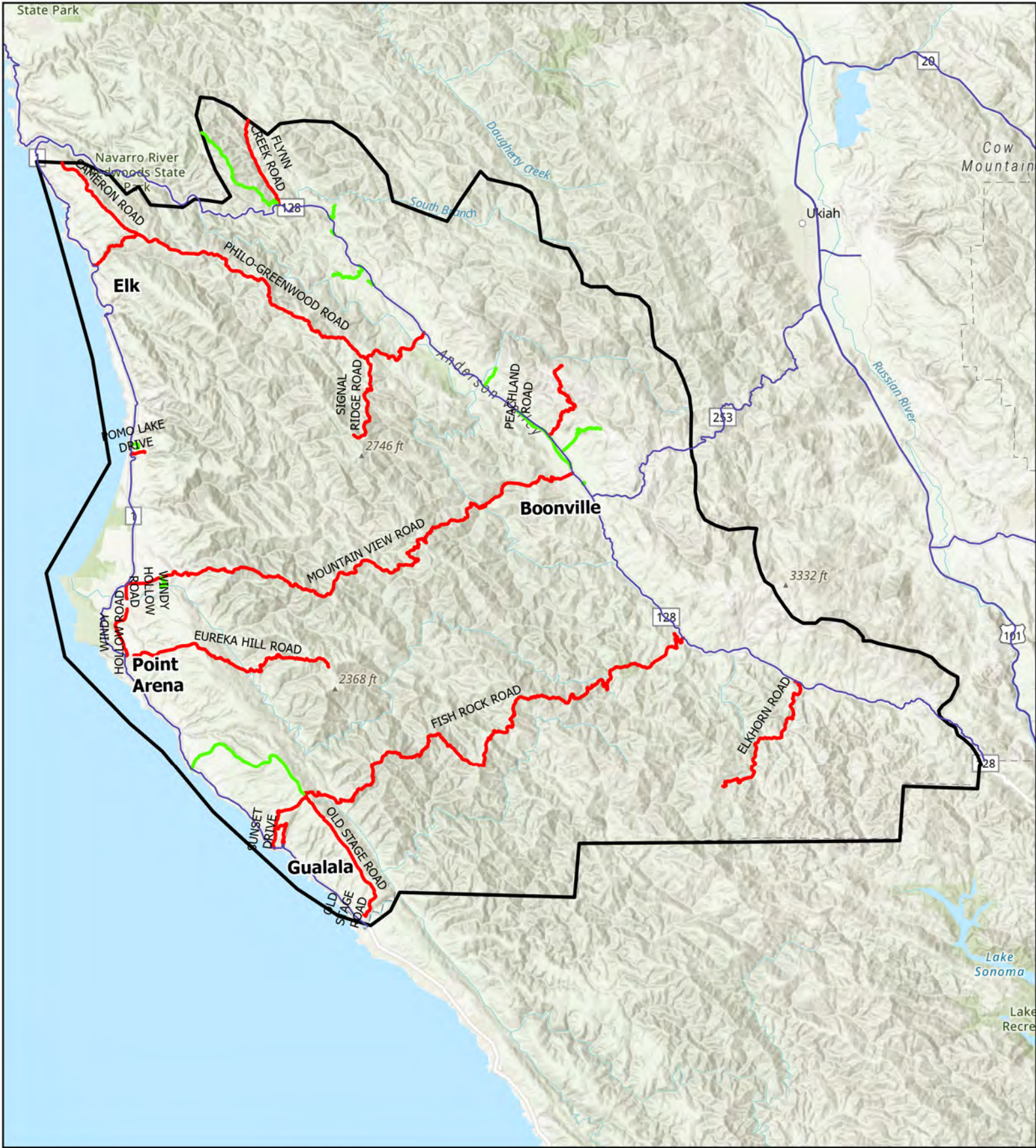




- Secondary Roads Area 2
- Primary Roads Area 2
- California Highways

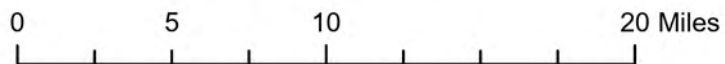
2023 Evacuation Routes of Primary Concern: Area 2





- Primary Roads Area 3
- Secondary Roads Area 3
- California Highways

2023 Evacuation Routes of Primary Concern: Area 3





- Primary Roads Area 4
- Secondary Roads Area 4
- California Highways

2023 Evacuation Routes of Primary Concern: Area 4

