



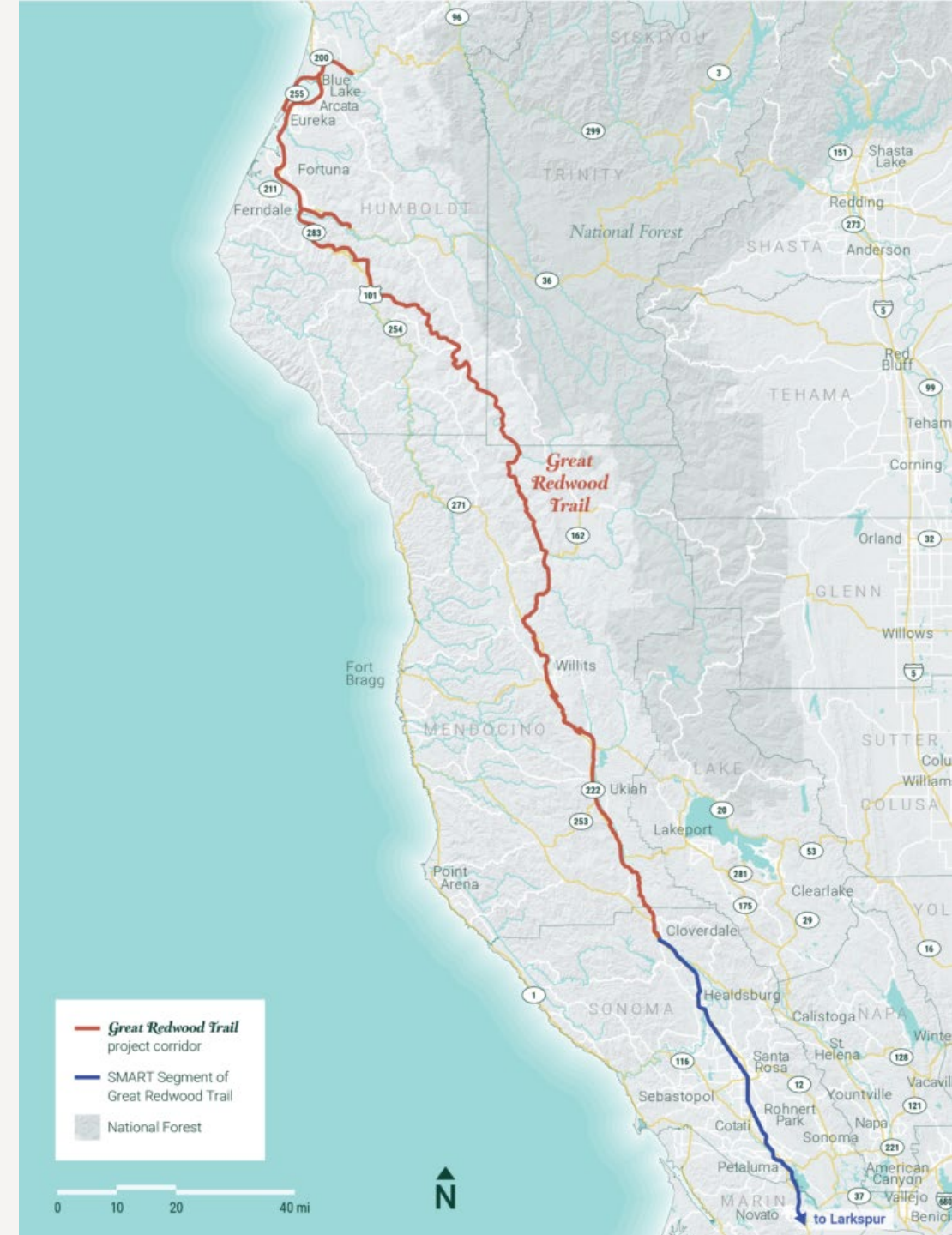
# **Great Redwood Trail Master Plan**

Mendocino County  
Board of Supervisors  
July 2023



# What is the Great Redwood Trail?

- The Great Redwood Trail (GRT) is envisioned as a 316-mile, multi-use rail-trail project connecting San Francisco Bay and Humboldt Bay.
- Follows the former, inactive North Coast Railroad Authority rail line.
- Transforms the rail corridor into a community asset and economic engine for the North Coast.



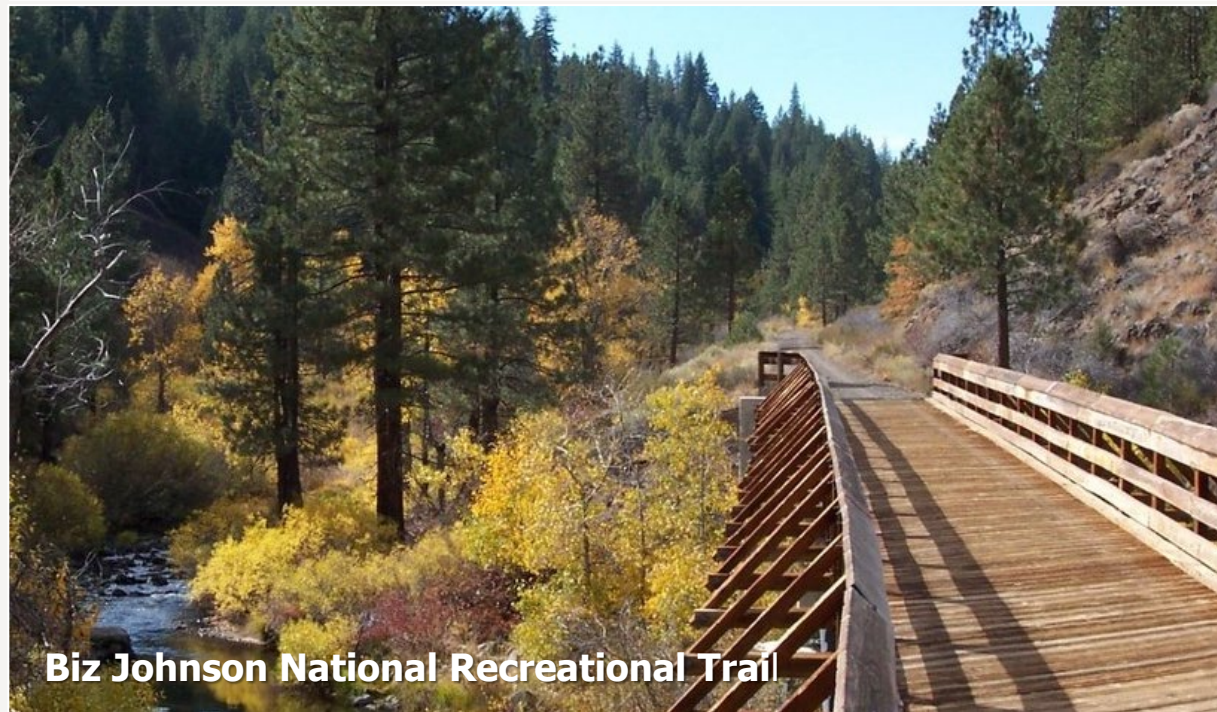


# What are Rail-Trails?

- Multi-use public paths created from former railroad corridors
- Model used across the country:
  - Over **25,000 miles** in the US with over **1,000 miles** in CA
- Rail trails support **recreation, economic development, tourism, and environmental restoration** in towns and rural areas



Olympic Discovery Trail



Biz Johnson National Recreational Trail



# How did we get here?

## 2018

- SB 1029 - Feasibility Reports

## 2021

- SB 69 - Great Redwood Trail Act Passed
  - Transferred Sonoma & Marin to SMART
  - Created the Great Redwood Trail Agency (GRTA)
  - Required the rail corridor be preserved via railbanking

## 2022 - Present

- Railbanked from Willits north (October)
- Kicked Off the Master Plan (October)

### Assessment of the North Coast Railroad Authority and Viability of a Great Redwood Trail



Report to the Legislature  
2020







# **Great Redwood Trail**

## Master Plan & Community Engagement Plan



# Project Team



**GREAT REDWOOD  
TRAIL AGENCY**



**alta**

**Master Plan**

**Community Engagement**



**Jacobs**



**SHANNON & WILSON**



**Jen Rice**



# Great Redwood Trail Master Plan

The master plan will provide a high-level roadmap on:

- Operations & maintenance
- Trail design
- Cultural & natural resource protection
- Habitat restoration
- Project prioritization
- Funding sources



# Community Engagement In The Master Plan

The master plan will be informed by a Community Engagement Plan including:

- Tribal engagement
- In-person and virtual community meetings
- Small group stakeholder meetings
- Online surveys, comment forms, and interactive website
- Tabling events





# What are we hearing so far?

- Concerns include:
  - Trespassing & Security
  - Fire Hazards
  - Encampments
  - Impacts to working lands
- Opportunities and desires include:
  - River access
  - Neighborhood connections
  - Economic development opportunities





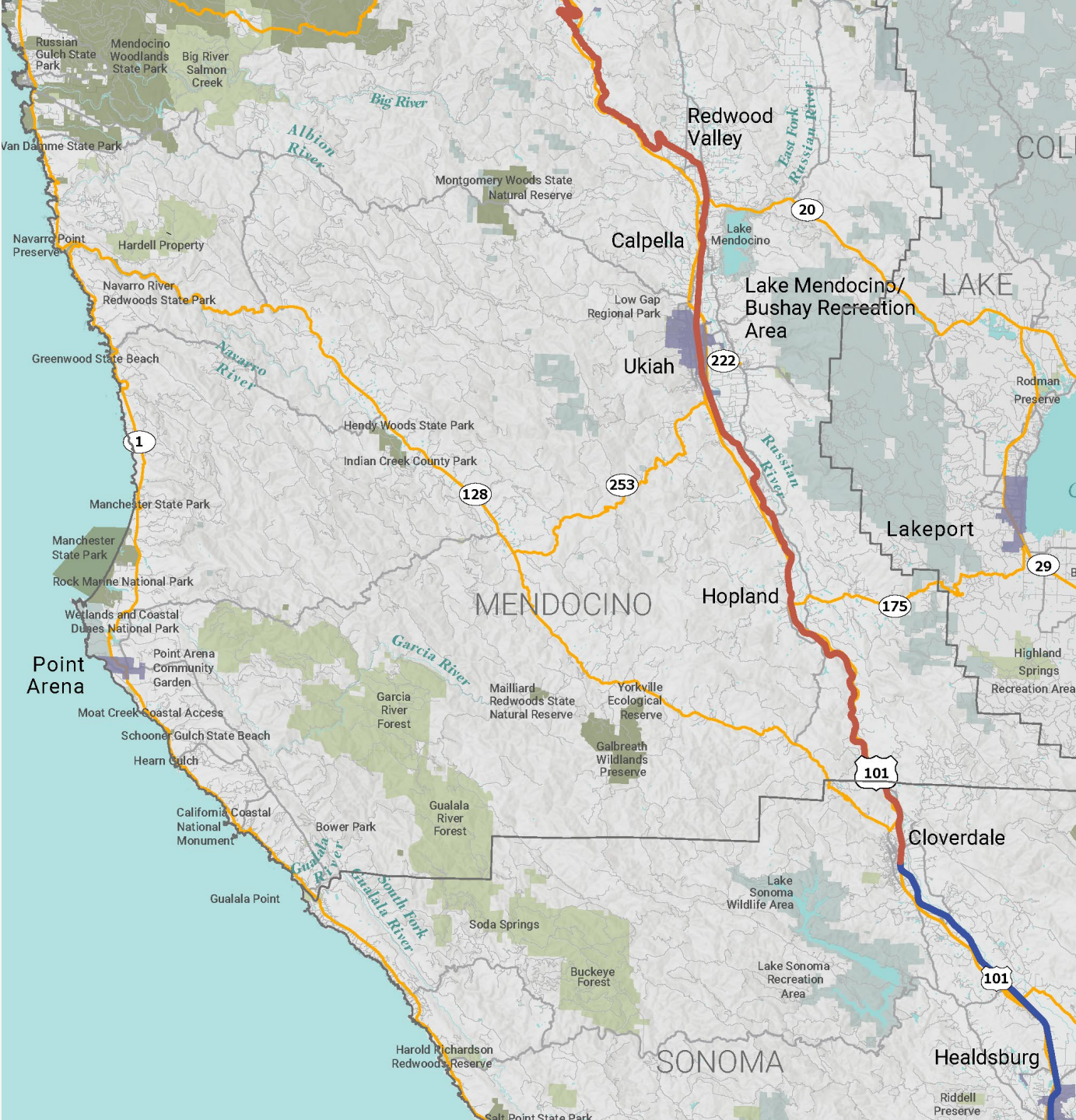


# **Great Redwood Trail**

## Mendocino County

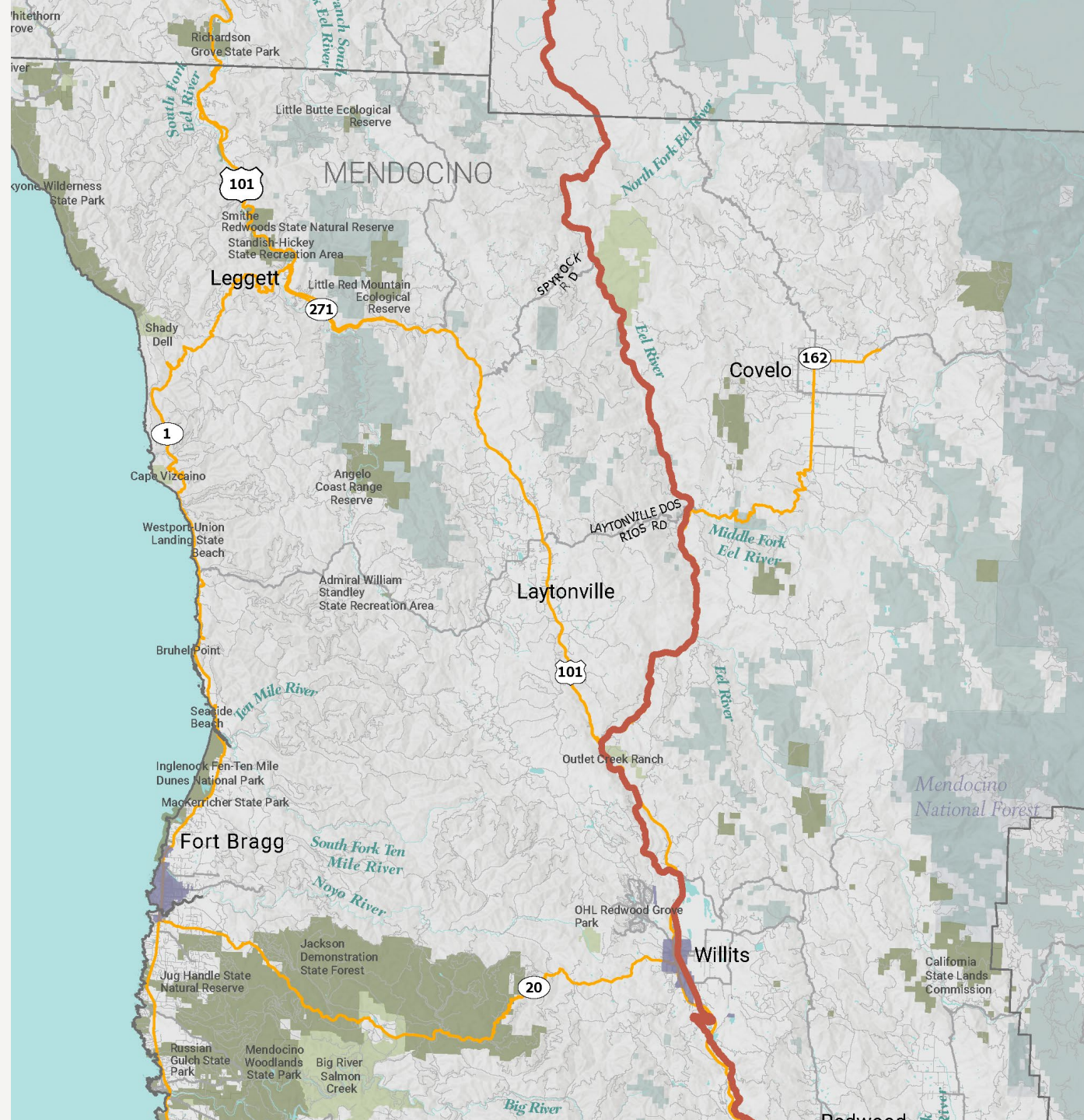


# Southern Mendocino County





# Northern Mendocino County







# **Great Redwood Trail**

## **Economic Impact**



# Economic Benefits Assessment

- Completed January 2023
- Assessment estimated benefits of a complete trail by:
  - Using benchmarks for economic growth from similar trails around the US
  - Estimating local and visitor trail use
  - Estimating benefits by jurisdiction, including cities and unincorporated county areas



## THE GREAT REDWOOD TRAIL

ECONOMIC BENEFITS ASSESSMENT  
2023





# Benefits of the Complete Trail

Economic benefits for Mendocino, Trinity and Humboldt Counties are estimated to be **\$102,568,000 annually**



**\$61,693,000**

RECREATION, TOURISM,  
AND RETAIL BENEFITS



**\$38,455,000**

HEALTH BENEFITS



**\$2,420,000**

TRANSPORTATION  
BENEFITS

# Recreation and Tourism Benefits

- Benefits come from tourists and visitors, an estimated one-third of total estimated trail users
- \$5,490,000 in annual tax revenue estimated from sales and transient occupancy tax

**\$61,693,000**



**\$23,519,000**

FOOD/MEALS



**\$5,972,000**

RETAIL ESTABLISHMENTS



**\$1,899,000**

ENTERTAINMENT



**\$398,000**

BICYCLE RENTALS



**\$29,905,000**

LODGING



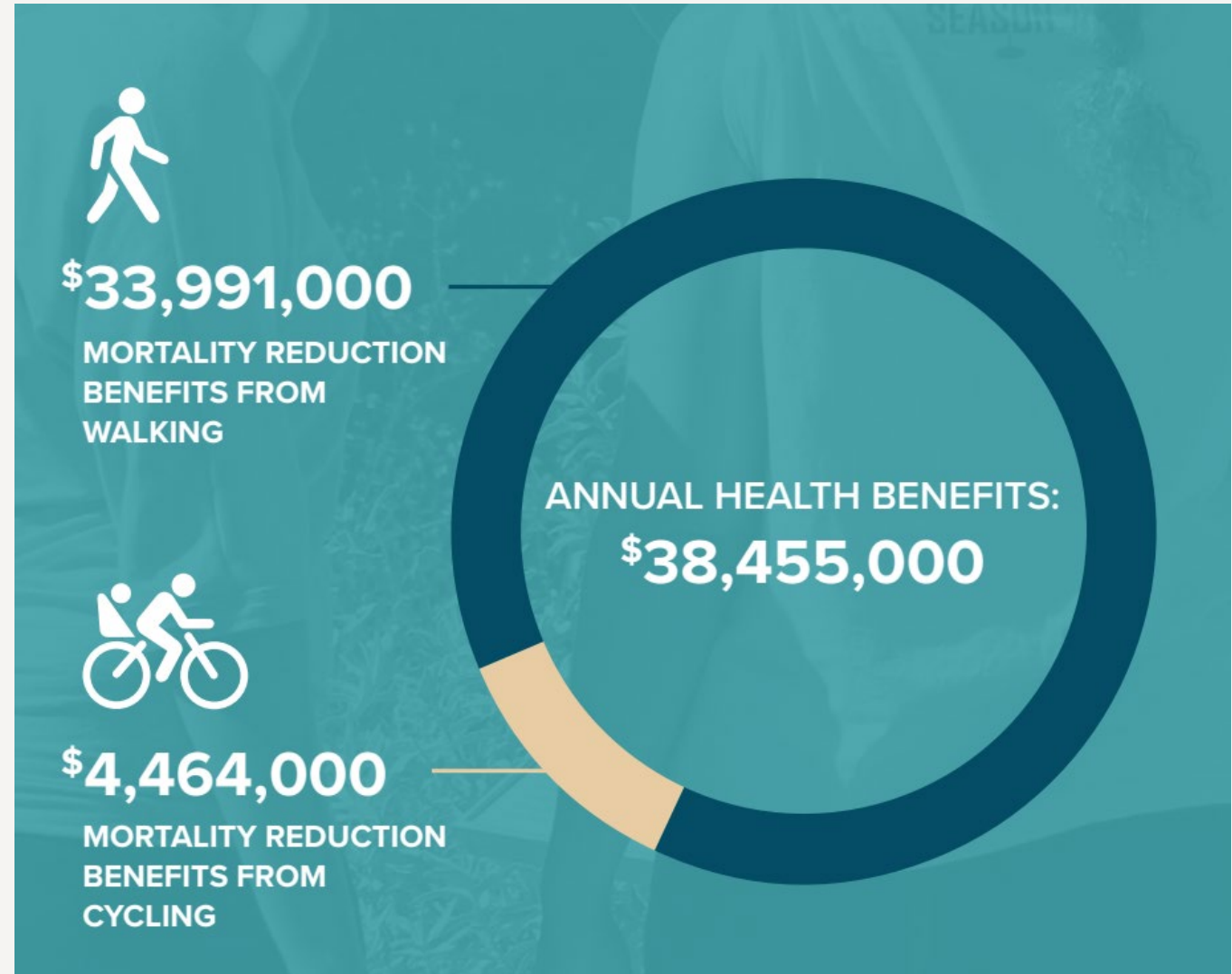
**\$5,490,000**

TAX REVENUE INCREASE



# Health Benefits

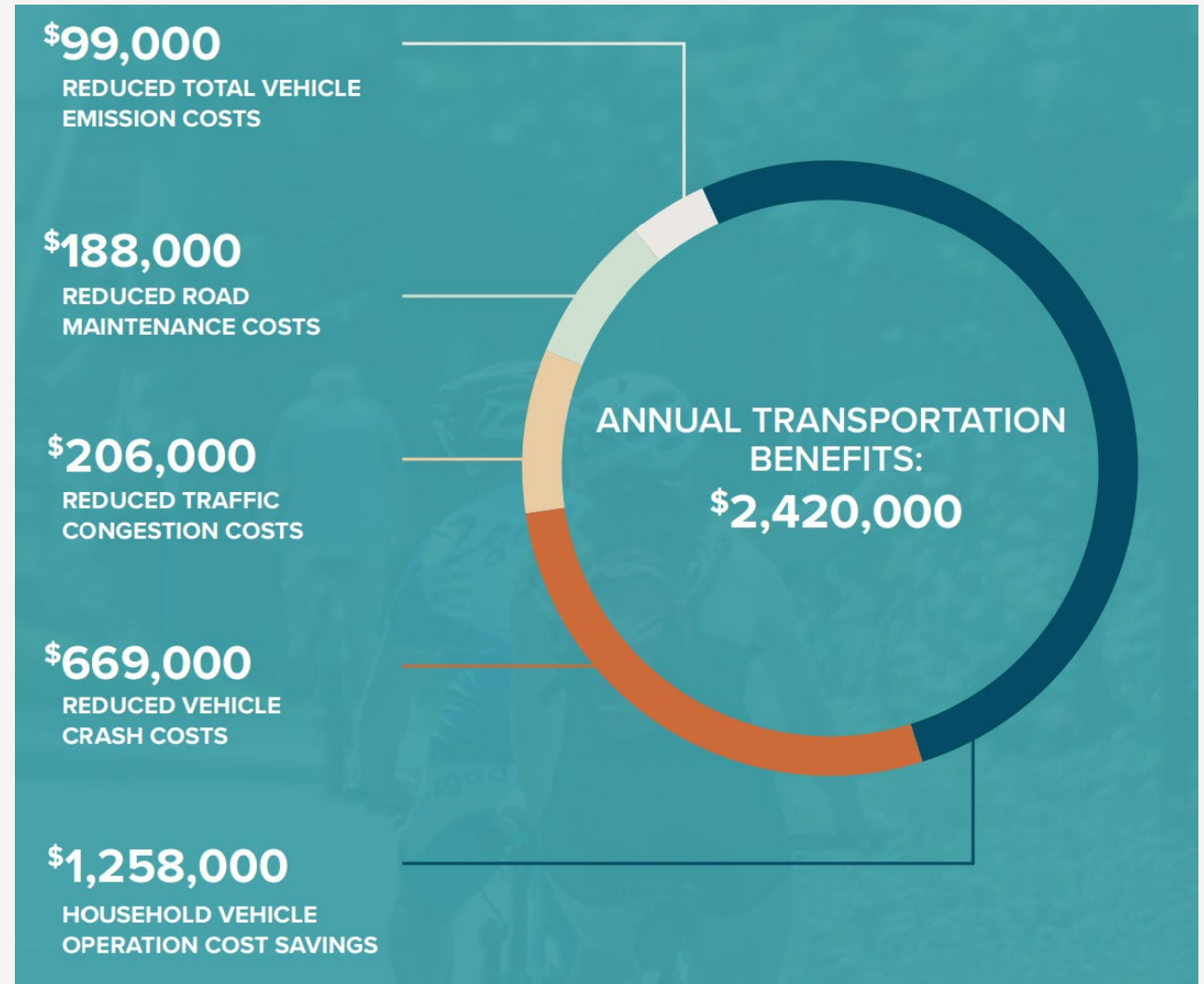
- Estimated annual health benefits come from:
  - New opportunities for physical activity and exercise
  - Health care cost savings
  - Reduced burden on regional health care system





# Transportation Benefits

- Estimated annual transportation benefits come from:
  - Reduction in Vehicle Miles Travelled (VMTs)
  - Reduction in CO2 emissions
  - Reduction in road maintenance & congestion costs
  - Household vehicle operation savings





# Benefits of the Complete Trail – Mendocino County

Economic benefits for Mendocino County are estimated to be **\$49,181,000 annually**



**\$29,662,000**

RECREATION, TOURISM,  
AND RETAIL BENEFITS



**\$18,485,000**

HEALTH BENEFITS



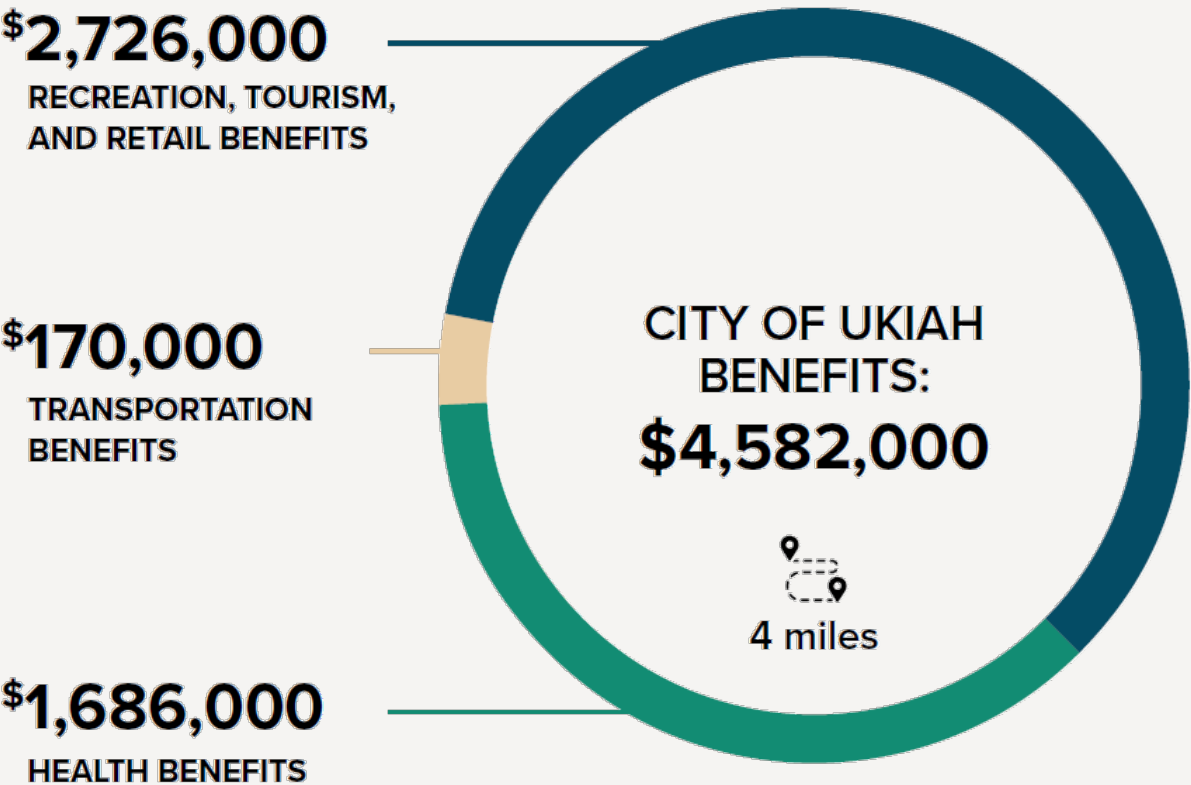
**\$1,034,000**

TRANSPORTATION  
BENEFITS



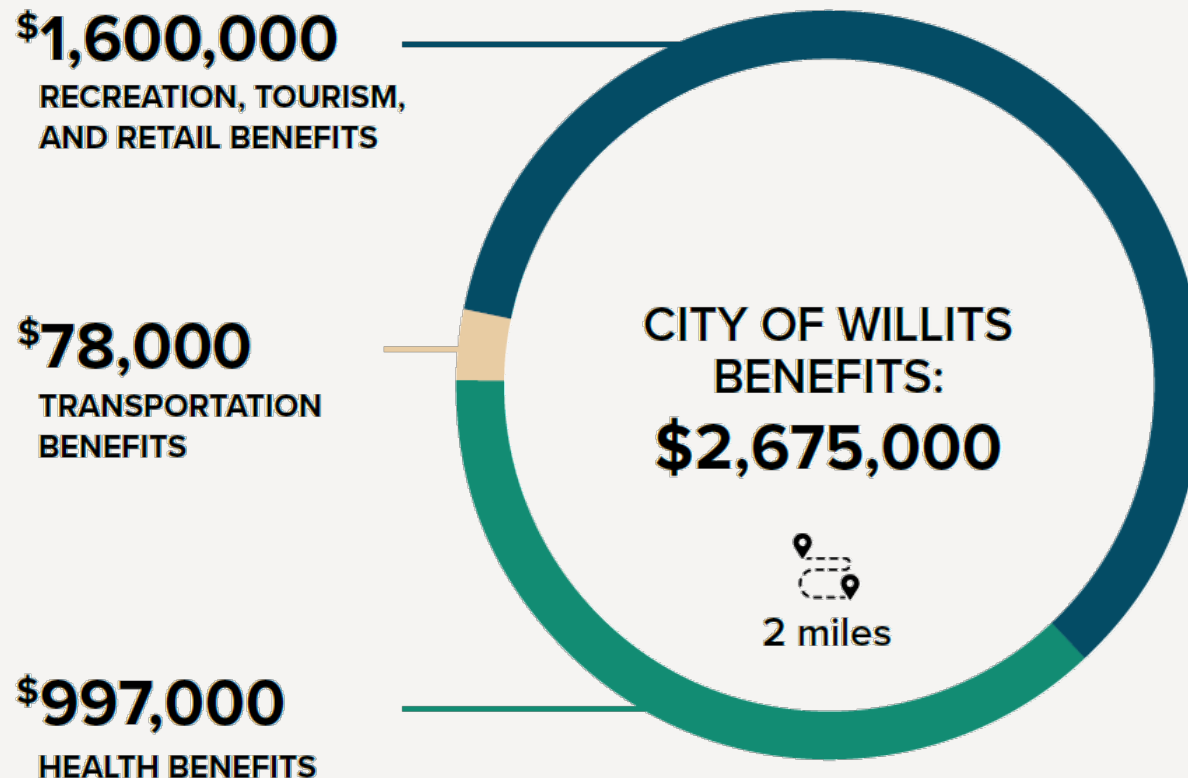
# CITY OF UKIAH

MENDOCINO COUNTY



# CITY OF WILLITS

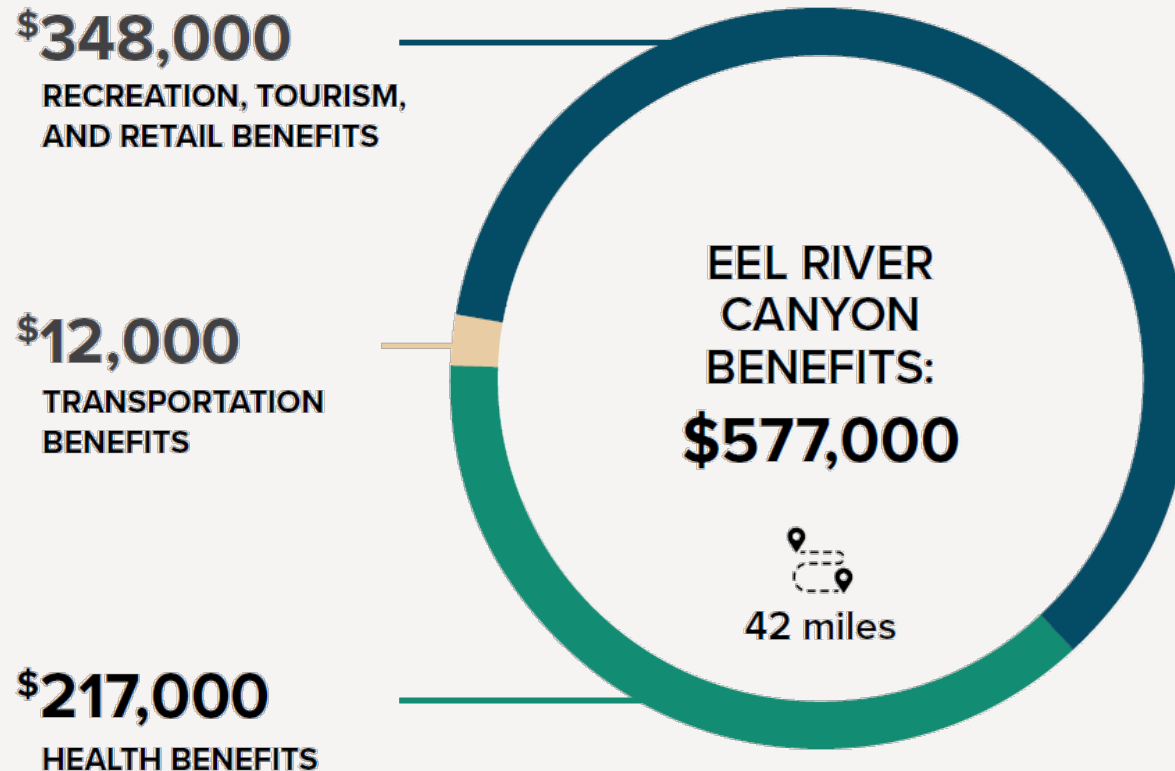
## MENDOCINO COUNTY



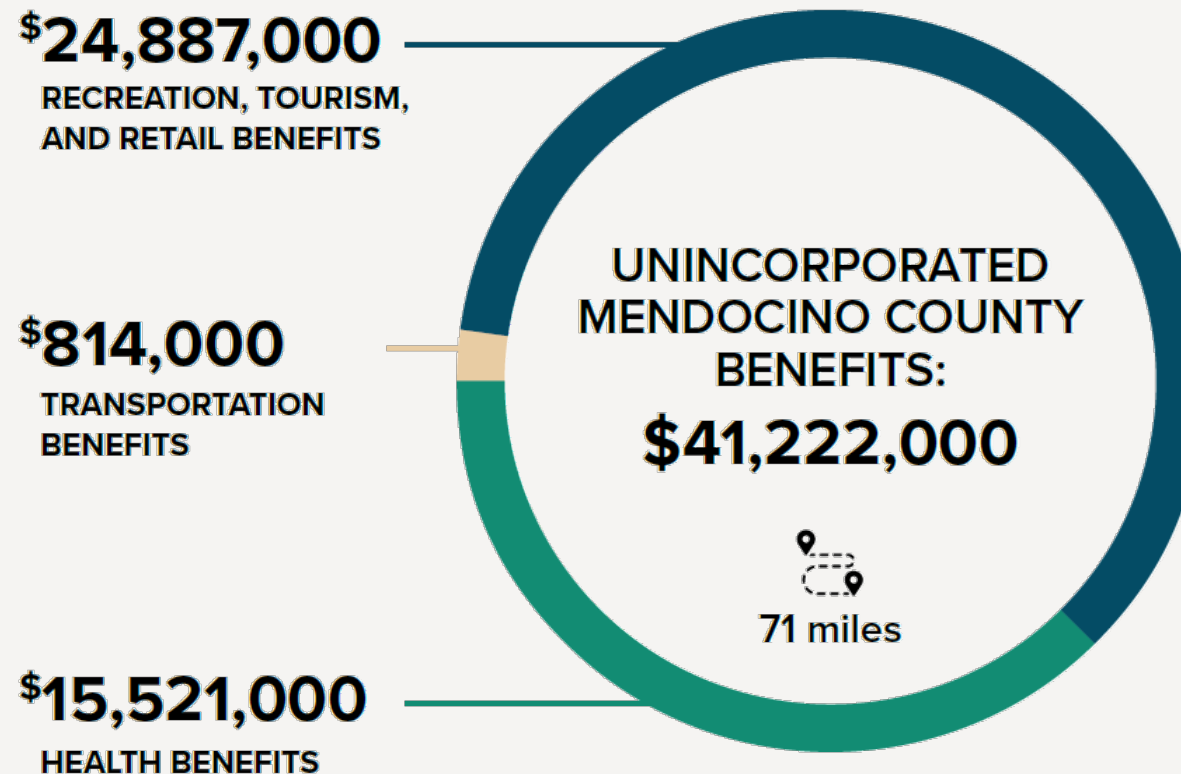


# EEL RIVER CANYON

Includes portions of unincorporated Mendocino, Trinity, and Humboldt County from the Middle Fork of the Eel River to Alderpoint.



# UNINCORPORATED MENDOCINO COUNTY







# **Great Redwood Trail**

Get Engaged



# Upcoming Events

*7/26 – Community Workshop #4*

**Alderpoint**

5:30 PM

Volunteer Fire Hall

*7/27 – Community Workshop #5*

**Hopland**

5:30 PM

Brutacao Cellars

*8/02 – Online Workshop #6*

Online via Zoom

## Summer and Beyond

Our team will be tabling at:

- Eureka Fourth of July Festival
- Willits Frontier Days
- Big Time(s)
- Humboldt County Fair
- Mendocino County Fair

Visit our website for details on future events.



# Getting Involved



WEBSITE



NEWSLETTER



SURVEY



WEBMAP



CALL

**[www.GreatRedwoodTrailPlan.org](http://www.GreatRedwoodTrailPlan.org)**

Leave us a voicemail: (707) 440-9445

Send us an email: [info@greatredwoodtrailplan.org](mailto:info@greatredwoodtrailplan.org)

# Project Contacts

**Louisa Morris (SCC)**

[louisa.morris@scc.ca.gov](mailto:louisa.morris@scc.ca.gov)  
(707) 357-3664

**Jen Rice**

[jen@jenriceconsults.com](mailto:jen@jenriceconsults.com)  
(707) 227-2818

**Carol Vander Meer (RCAA)**

[cvandermeer@rcaa.org](mailto:cvandermeer@rcaa.org)  
(707) 269-2068

**Jeff Knowles (Alta)**

[Jeffreyknowles@altago.com](mailto:Jeffreyknowles@altago.com)  
(510) 788-6878



A scenic landscape featuring a river flowing through a valley, surrounded by hills and sparse vegetation. A large, dark rock formation is prominent on the left side of the river. A railway track runs along the bottom left. A large green circle is overlaid on the center of the image, containing the text "Questions & Comments".

# Questions & Comments