

# California Wildlife Services Program

<http://www.aphis.usda.gov/ws/ca>



United States Department of Agriculture

**Derek Milsaps,**  
**CA North District Supervisor**



Protecting People | Protecting Agriculture | Protecting Wildlife

# Objective

<http://www.aphis.usda.gov/ws/ca>

## Provide overview of the California Wildlife Services program:

- Why are we here?
- Who are we?
- What do we do?
- What to expect from us?



# Seeking Assistance with Wildlife Conflict

<http://www.aphis.usda.gov/ws/ca>



United States Department of Agriculture



Protecting People | Protecting Agriculture | Protecting Wildlife

Why are we here?

# Resources Protected

<http://www.aphis.usda.gov/ws/ca>



**W** Wildlife  
Services

Protecting People | Protecting Agriculture | Protecting Wildlife

What do we do?

# Human-Wildlife Conflict

<http://www.aphis.usda.gov/ws/ca>



**W** Wildlife  
Services

Protecting People | Protecting Agriculture | Protecting Wildlife

What do we do?

# Requesting Assistance from Wildlife Services

<http://www.aphis.usda.gov/ws/ca>



???



???

???

**W** Wildlife  
Services

Protecting People | Protecting Agriculture | Protecting Wildlife

What to expect from us?

# Field Investigations

<http://www.aphis.usda.gov/ws/ca>



What to expect from us?

**W** Wildlife  
Services

Protecting People | Protecting Agriculture | Protecting Wildlife

# Technical Assistance

<http://www.aphis.usda.gov/ws/ca>



**W** Wildlife  
Services

Protecting People | Protecting Agriculture | Protecting Wildlife

What to expect from us?

# Direct Control

<http://www.aphis.usda.gov/ws/ca>



**W** Wildlife  
Services

Protecting People | Protecting Agriculture | Protecting Wildlife

What to expect from us?

# IWDM Toolbox

<http://www.aphis.usda.gov/ws/ca>

## Non-lethal Methods

- Harassment
  - ❖ Audible (pyro, RAG)
  - ❖ Visual (lights, mylar)
  - ❖ Chemical (repellants)
  - ❖ Tactile (projectiles, water)
- Guardian animals (dogs, llamas, donkeys)
- Exclusion
  - ❖ Fencing
  - ❖ Fladry
- Sterilization
- Immuno-contraception
- Taste aversion

## Lethal Methods

- Shooting
  - ❖ Ground-based
- Trapping
  - ❖ ~~Steel-jawed foothold traps~~
  - ❖ Snares **Banned 1998**
  - ❖ Cage traps
  - ❖ Corral traps
- ~~Poisons~~
  - ❖ ~~Sodium cyanide ejectors (M-44)~~
  - ❖ ~~Livestock protection collars (Compound 1080)~~
  - ❖ ~~Place baits~~ **Banned 1972**

# Human Health & Safety Protection

<http://www.aphis.usda.gov/ws/ca>

## Mountain Lion Attacks On People

### Verified Mountain Lion-Human Attacks

The CDFW defines a mountain lion attack as an incident resulting in direct physical contact between a human and a mountain lion resulting in physical injury or death to the person. An attack is verified only when a physician, law enforcement officer or CDFW personnel determine the injuries were caused by a mountain lion. Incidents reported as attacks that do not fit the criteria of verifiable attacks on humans are not included in the list below.

Date	Type	Attack Location	County	Victim Sex	Victim Age
March 1886	Nonfatal	Caspers Wilderness Park	Orange	Female	5 yrs.
Oct. 1966	Nonfatal	Caspers Wilderness Park	Orange	Male	6 yrs.
March 1992	Nonfatal	Gaviota State Park	Santa Barbara	Male	9 yrs.
Sept. 1993	Nonfatal	Cuyamaca State Park	San Diego	Female	10 yrs.
Apr. 1994	Fatal	Auburn State Recreation Area	El Dorado	Female	40 yrs.
Aug. 1994	Nonfatal	Mendocino County (remote)	Mendocino	Male	48 yrs.
	Nonfatal			Female	48 yrs.
Dec. 1994	Fatal	Cuyamaca State Park	San Diego	Female	56 yrs.
Mar. 1995	Nonfatal	Mt. Lowe (San Gabriel Mtns.)	Los Angeles	Male	27 yrs.
Jan. 2004	Fatal	Whiting Ranch Regional Park	Orange	Male	35 yrs.
Jan. 2004	Fatal	Whiting Ranch Regional Park	Orange	Female	30 yrs.
June 2004	Nonfatal	Sequoia National Forest	Tulare	Female	28 yrs.
Jan. 2007	Nonfatal	Prairie Creek Redwoods State Park	Humboldt	Male	70 yrs.
Jul. 2012	Nonfatal	Confluence of Shady Creek and Yuba River	Nevada	Male	63 yrs.
Sept. 2014	Nonfatal	Cupertino	Santa Clara	Male	6 yrs.
May 2019	Nonfatal	Los Peñasquitos Canyon Preserve	San Diego	Male	4 yrs.

Notes: According to historical reports, four fatal incidents involving six victims occurred around the turn of the previous century.

### When mountain lion attacks, spouse fights back Wife clubs big cat with log after husband is attacked in California state park

AP Associated Press

updated 11:04 p.m. PT, Sat., Jan. 27, 2007

SAN FRANCISCO — Wildlife officials credited a woman with saving her husband's life by clubbing a mountain lion that attacked him while the couple were hiking in a California state park.

Jim and Nell Hamm, who will celebrate their 50th wedding anniversary next month, were hiking in Prairie Creek Redwoods State Park when the lion pounced, officials said Thursday.

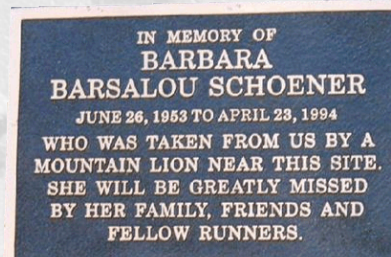
"He didn't scream. It was a different, horrible plea for help, and I turned around, and by then the cat had wrestled Jim to the ground," Nell Hamm said in an interview from the hospital where her husband was recovering from a torn scalp, puncture wounds and other injuries.

NBC VIDEO



Woman battles lion to save husband  
Jan. 26: Nell Hamm talks to MSNBC-TV's Chris Jensen about how she was able to fight off a mountain lion to save her husband's life.

MSNBC



Posted 1/9/2004 5:43 AM Updated 1/11/2004 2:21 AM

### Man killed by mountain lion; cyclists also attacked in California

MISSION VIEJO, Calif. (AP) — Initial tests conducted on a male mountain lion suspected of killing one biker and injuring another revealed human skin tissues found in its stomach, authorities said.



Mark Reynolds, in an undated photo, has been killed by a mountain lion, an animal found in the western U.S.

AP and Getty file photos

Footprints taken in Whiting Ranch Wilderness Park in Orange County had the same

## Coyote Attacks On People



06/07/04

SIMI VALLEY, Calif. - Police shot to death a coyote they believe attacked four children, including a 3-year-old who was hospitalized with bites to his neck, face, head and ear, authorities said Monday...

### Child hospitalized after coyote attack in East Bay park

5-year-old girl treated for non-life-threatening injuries; park closed to visitors

04/01/2020  
Dublin, Calif

**6-year-old girl attacked by a mountain lion saved by adult who punched it in the ribs  
Feb, 2020**

**W Wildlife Services**

Protecting People | Protecting Agriculture | Protecting Wildlife

# Protecting Natural Resources

<http://www.aphis.usda.gov/ws/ca>



- **Sierra Nevada Bighorn**
- **Snowy plover**
- **Least tern**
- **Desert Tortoise**



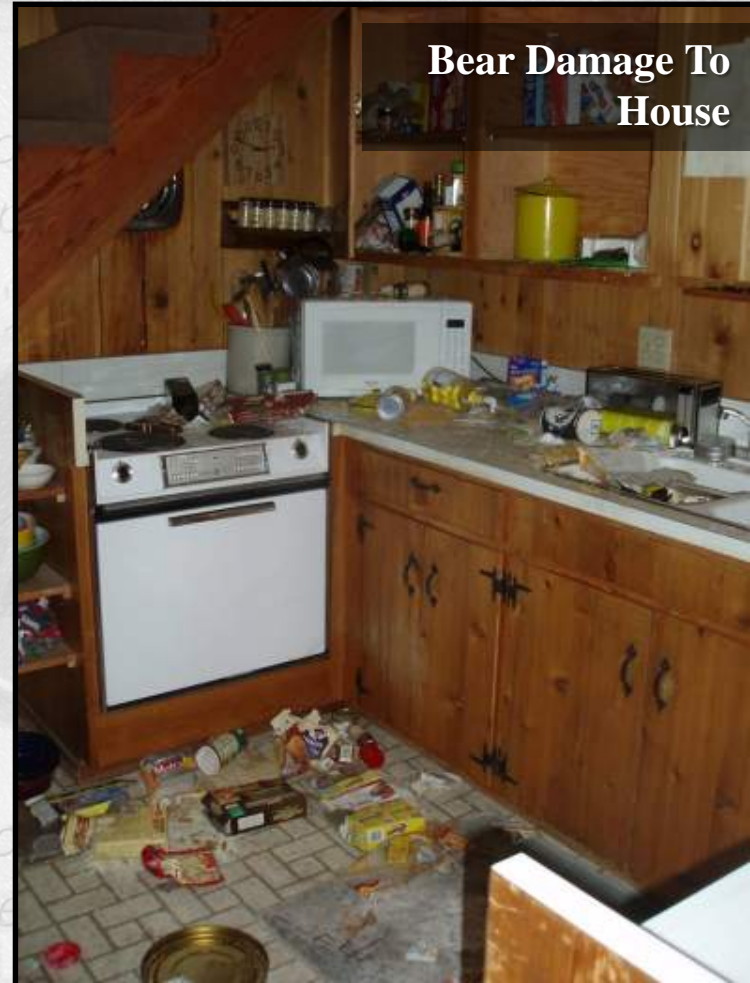
# Property Protection

<http://www.aphis.usda.gov/ws/ca>

**Small mammal damage  
to House**



**Bear Damage To  
House**



**Feral Pig Damage  
to Golf Course**



# Livestock Protection

<http://www.aphis.usda.gov/ws/ca>



# Wildlife Disease Surveillance and Emergency Response

<http://www.aphis.usda.gov/ws/ca>



- 989 Disease samples
- 1/2 from feral swine
- Rabies
- Plague
- Tularemia
- Leptospirosis
- E.coli
- Swine brucellosis
- Pseudorabies



**W** Wildlife  
Services

Protecting People | Protecting Agriculture | Protecting Wildlife

# CDFW Depredation Permit Species

<http://www.aphis.usda.gov/ws/ca>

- Nine species require proof of damage and a permit to be issued by CDFW.
- The CDFW permit specifies methods, number of animals, time period and carcass disposition.



**W** Wildlife  
Services

Protecting People | Protecting Agriculture | Protecting Wildlife

What to expect from us?

# Field Innovation and Adaptation

<http://www.aphis.usda.gov/ws/ca>



Protecting  
Property

**W** Wildlife  
Services

Protecting People | Protecting Agriculture | Protecting Wildlife

# Public Education and Outreach

<http://www.aphis.usda.gov/ws/ca>



**W Wildlife  
Services**

Protecting People | Protecting Agriculture | Protecting Wildlife

# Clarification

<http://www.aphis.usda.gov/ws/ca>

- **Prop 4 (1998) Banned**
  - **Sodium cyanide – M-44s, Compound 1080 , Steel jawed traps**  
**A portion of prop 4 was overturned and provided for WS the use of padded-jaw leghold traps for HH&S response and for the protection of T&E species**  
**WS – California no longer uses M-44's in California**
  - **WS does not condone any form of animal cruelty and holds all employees responsible for adhering to Departmental standards and directives**
  - **WS obtains signed agreements for entry on all properties we work**

# Clarifications

<http://www.aphis.usda.gov/ws/ca>

- **WS-California uses the AFWA (Association of Fish and Wildlife Agencies) approved BMP's in selection of tools**
- **WS-California has never used a conibear in Mendocino County**
- **WS-California follows AVMA guidelines for Euthanasia**
  - **Cervical dislocation is an approved AVMA euthanasia method.**

# Questions?

<http://www.aphis.usda.gov/ws/ca>

