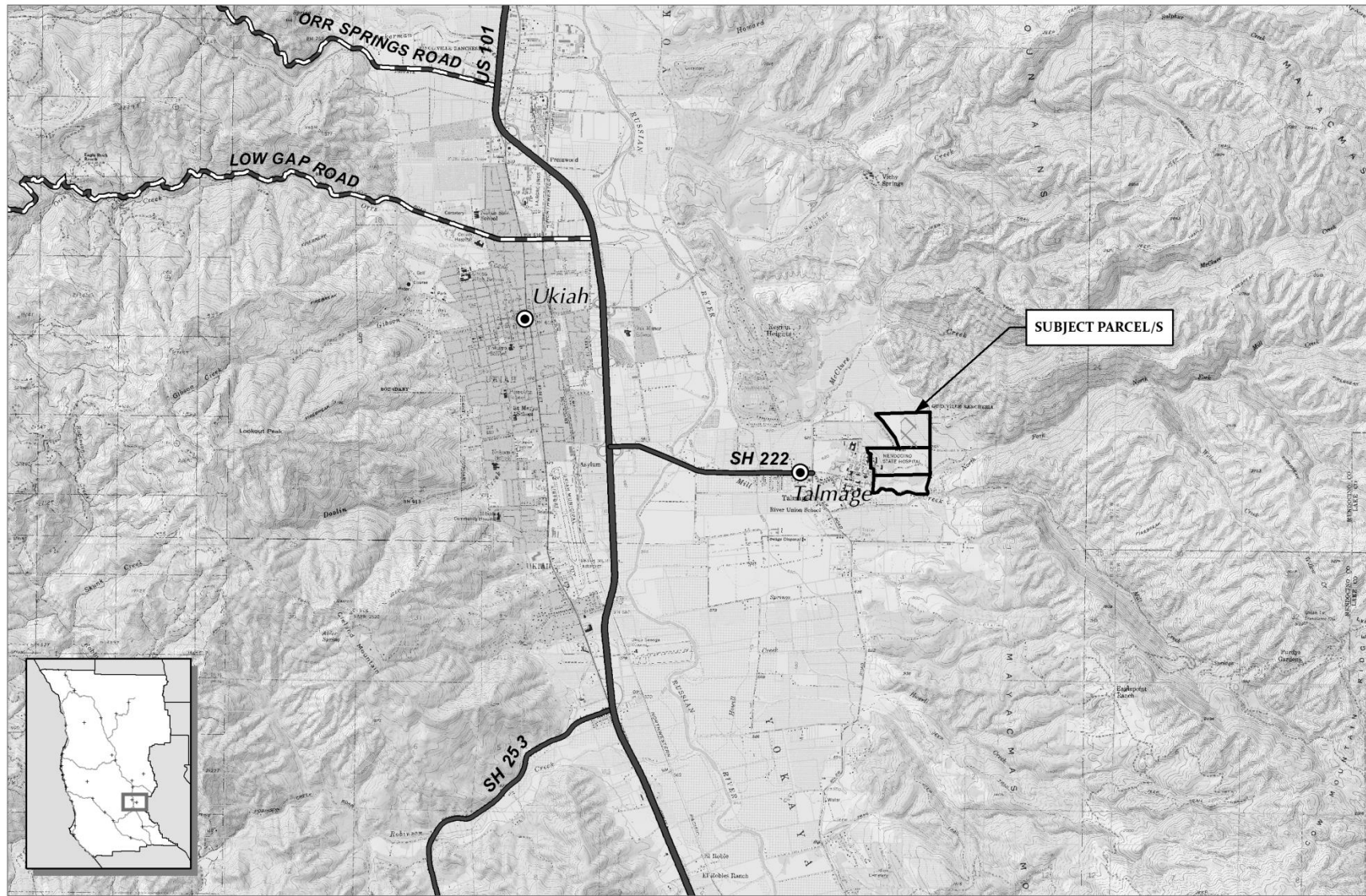
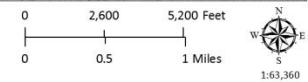


Attachment A



CASE: UR 2009-0002
 OWNER: Dharma Realm Buddhist Assn., Inc.
 APN: 181-200-04, et. al.
 APLCT: Dharma Realm Buddhist Assn., Inc.
 AGENT: John Chu
 ADDRESS: 2500 McClure Subdivision Road, Ukiah

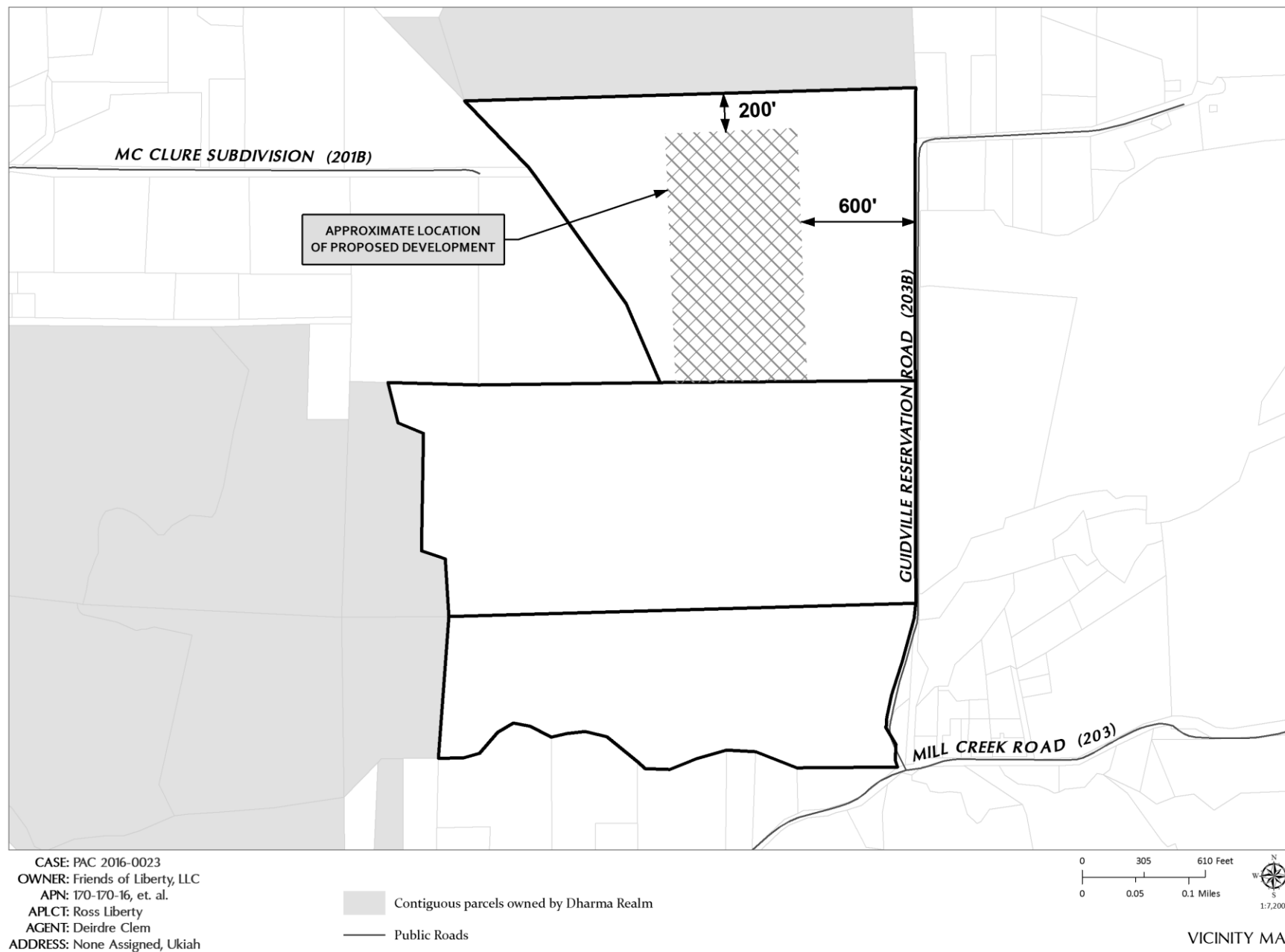
- Major Towns & Places
- Highways
- Major Roads



LOCATION MAP

Map produced by the Mendocino County Planning & Building Services, September, 2016
 All spatial data is approximate. Map provided without warranty of any kind.

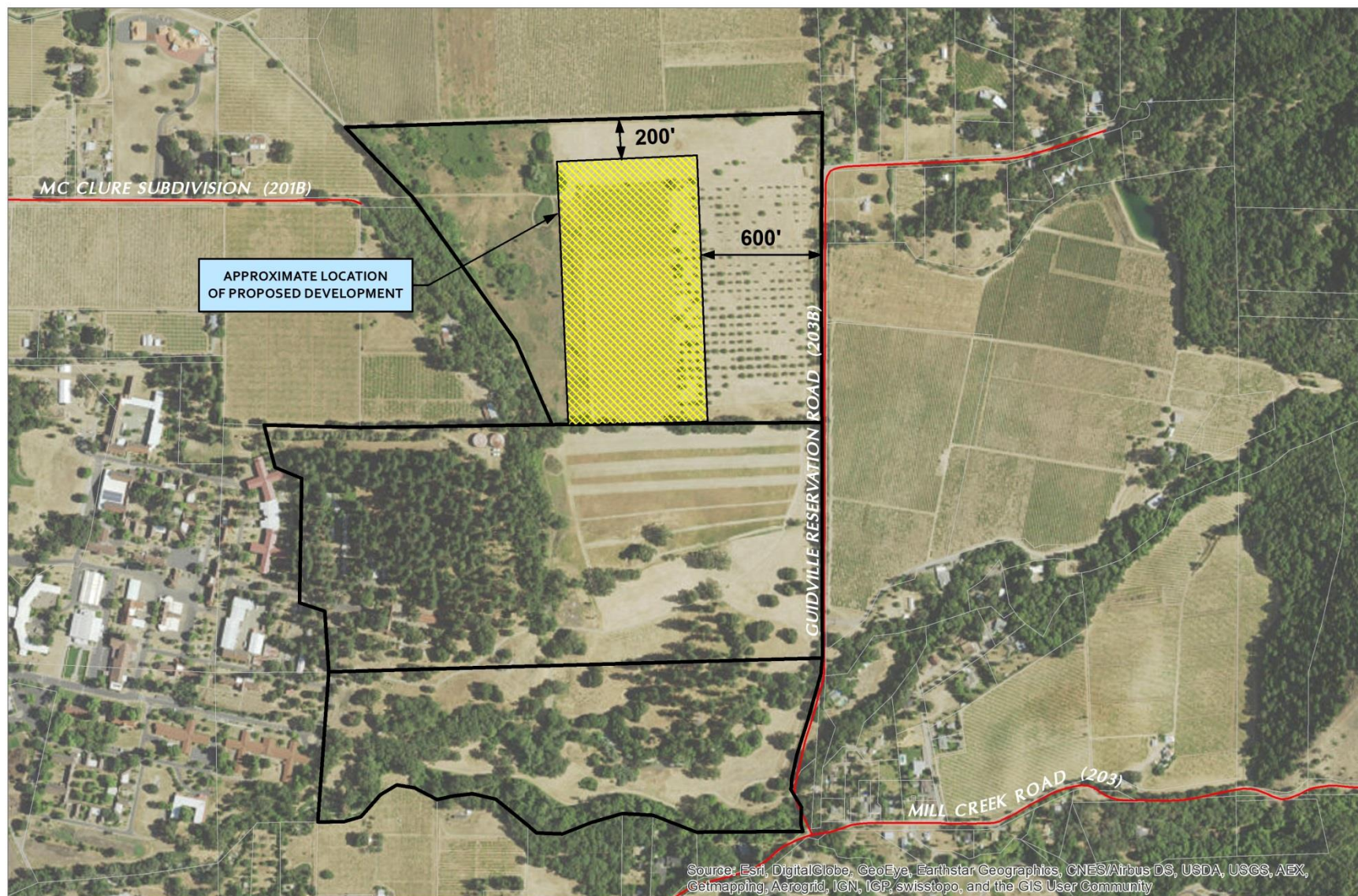
Attachment B



CASE: PAC 2016-0023
 OWNER: Friends of Liberty, LLC
 APN: 170-170-16, et. al.
 APLCT: Ross Liberty
 AGENT: Deirdre Clem
 ADDRESS: None Assigned, Ukiah

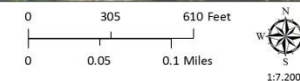
Map produced by the Mendocino County Planning & Building Services, September, 2016
 All spatial data is approximate. Map provided without warranty of any kind.

Attachment C



CASE: U 2009-0002
 OWNER: Dharma Realm Buddhist Assn., Inc.
 APN: 181-200-04, et. al.
 APLCT: Dharma Realm Buddhist Assn., Inc.
 AGENT: John Chu
 ADDRESS: 2500 McClure Subdivision Road, Ukiah

Public Roads



ESRI IMAGERY

Map produced by the Mendocino County Planning & Building Services, September, 2016
 All spatial data is approximate. Map provided without warranty of any kind.