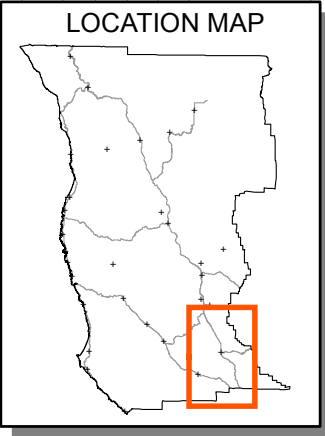


NOTE: At the date of adoption, the boundaries of the proposed Hopland MAC are coterminous with the Sanel Valley Fire District.



Coordinate System: NAD 83, Calif. State Plane Zone II  
Projection: Lambert Conformal Conic  
Parcel Data: Mendocino County Info. Svcs., October, 2014  
Aerial Imagery: US Dept. of Agriculture, NAIP series, unless otherwise indicated  
Topographic Data: USGS 7.5 minute quad series  
Flood Data: FEMA FIRM Maps, June 2011

- Major Towns & Places
- Highways
- ▭ Sanel Valley FPD
- ▭ Parcels 10-15
- Major Rivers

PROPOSED HOPLAND MAC BOUNDARY

