



ACES Overview & How You Can Help CTAT

TUESDAY, JANUARY 7, 2020

SHERYN HILDEBRAND

ROSEANNE IBARRA

JULIE FETHERSTON

Overview

Introduction

- Who we are - CTAT
- What we've been doing – Work Plan and authentic collaboration

ACES Overview

- What it is?

How are you seeing this in your communities/issues of interest?

- How is it impacting your community?
- What resources do you have in your community to address it?

How does this impact your staff?

What is prevention?

You are part of the solution

Introduction

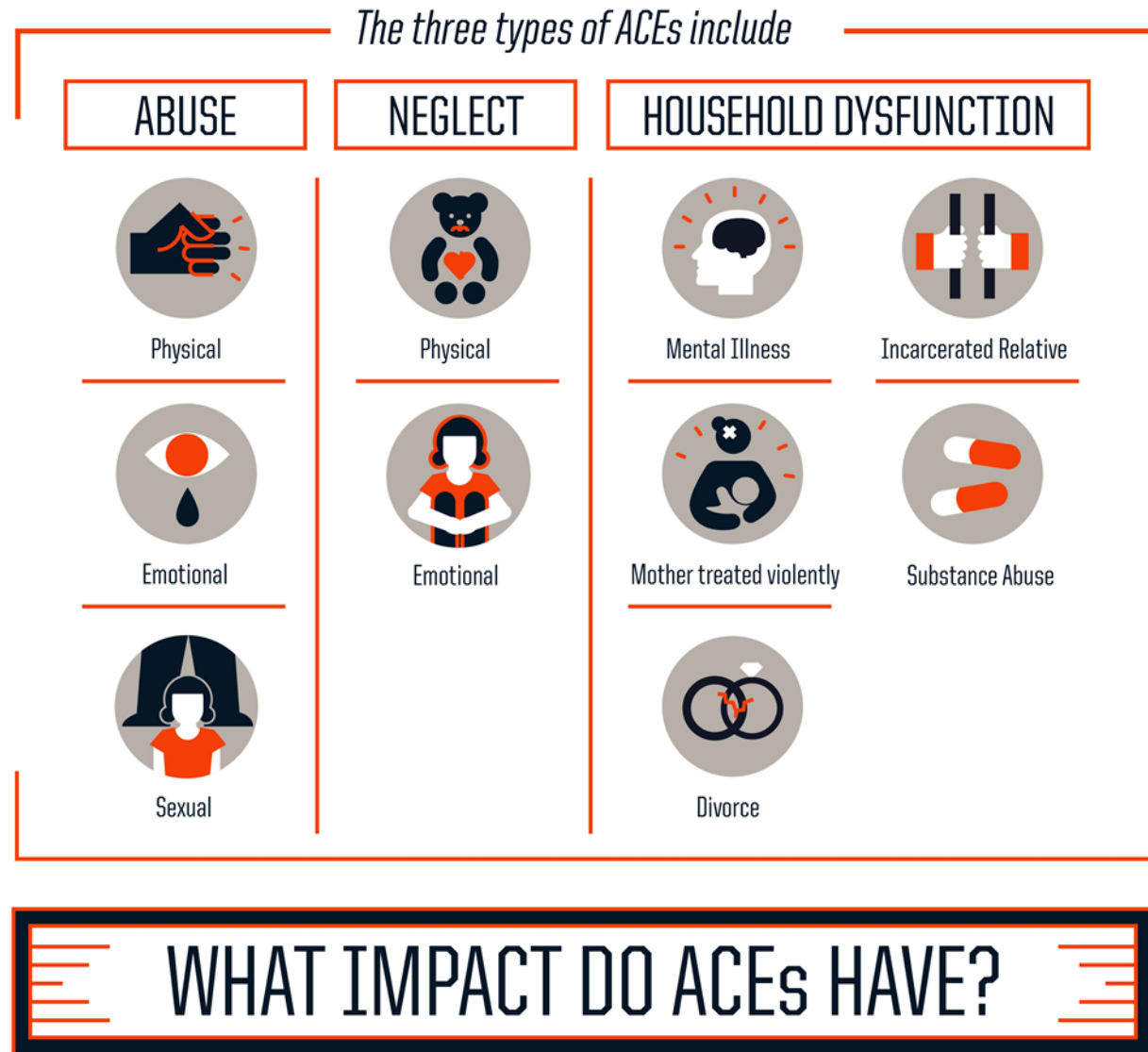


All children will have the support and opportunity to grow up in stable and supportive families, and families will have access to support in times of crisis.

ACES Overview

How Childhood
Trauma Affects
Health Across a
Lifetime – Dr.
Nadine Burke Harris
(TED Talk February
17, 2015)

<https://www.youtube.com/watch?v=95ovlJ3dsNk>



Adverse Childhood Experiences

Traumatic events that can have negative, lasting effects on health and wellbeing



People with 6+ ACEs can die

20 yrs

earlier than those who have none

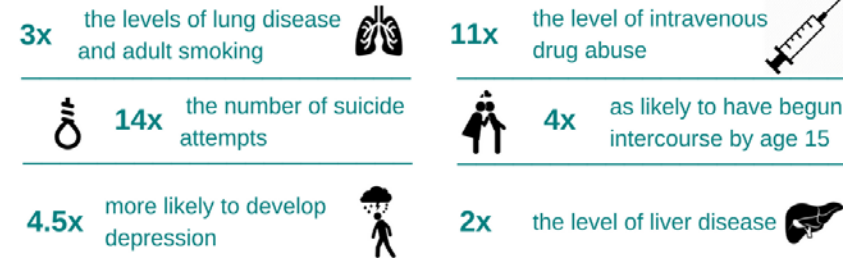


1/8 of the population have more than 4 ACEs



www.70-30.org.uk
@7030Campaign

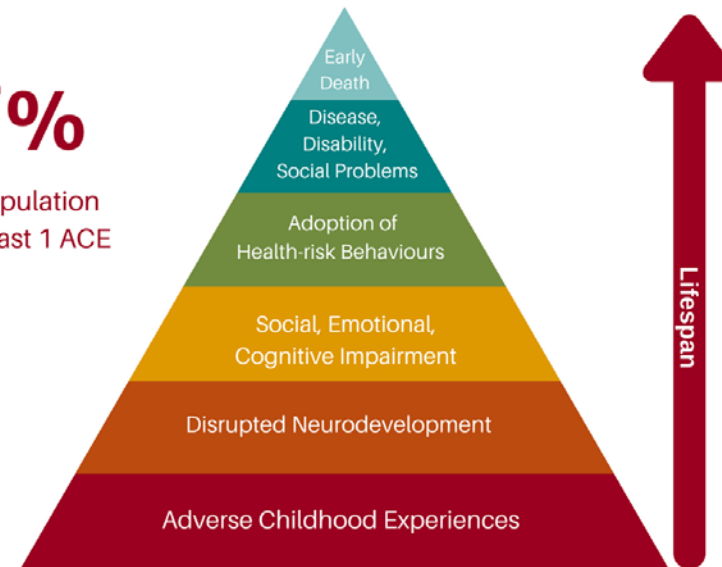
4 or more ACEs



“Adverse childhood experiences are the single greatest unaddressed public health threat facing our nation today”

Dr. Robert Block, the former President of the American Academy of Pediatrics

67%
of the population have at least 1 ACE



How are you
seeing this in
your
communities &
issues of
interest?



Local Impact



Local Cost



Local Resources

HOW ACES AFFECT ADULTS

Those experiencing four or more ACEs, compared to those with zero are:



2.3 X
more likely to
**REPORT POOR
HEALTH**



5 X
more likely to
**HAVE CLINICAL
DEPRESSION**



1.5 X
more likely to
**SMOKE
CIGARETTES**



3 X
more likely to
**HAVE HEART
DISEASE**



2 X
more likely to
HAVE DIABETES

The experiences children have early in life, and the environments in which they live, shape their developing brains and strongly affect whether they grow up to be healthy, productive members of society.

How does this impact your staff?

What is Prevention?

Tertiary – To “treat” after violence occurs, support victims to heal and provide treatment to offenders

Secondary – To intervene, prevent violence from happening again and deal with short-term consequences

Primary – Before violence or behavior occurs, work on changing attitudes and norms that support it

WHAT *can* BE DONE ABOUT ACES?

These wide-ranging health and social consequences underscore the importance of preventing ACEs before they happen. **Safe, stable and nurturing relationships** (SSNRs) can have a positive impact on a broad range of health problems and on the development of skills that will help children reach their full potential. Strategies that address the needs of children and their families include:



Home visiting to pregnant women and families with newborns



Parenting training programs



Intimate partner violence prevention



Social support for parents



Parent support programs for teens and teen pregnancy prevention programs



Mental illness and substance abuse treatment



Preschool Enrichment



Sufficient income support for lower income families

Current Landscape



State is focusing on ACEs
prevention and assessment



Funding is being directed toward
this work

You Are Part of the Solution

We are reactive, we need to be PROACTIVE

Fireside chats in your districts