

COVID-19 Overview

UPDATED 3.19.2020 8:00 AM

COMMUNICABLE DISEASE CONTROL
DISEASE CONTROL INVESTIGATION
EPIDEMIOLOGY AND EVALUATION



 **sonoma county**
DEPARTMENT OF HEALTH SERVICES

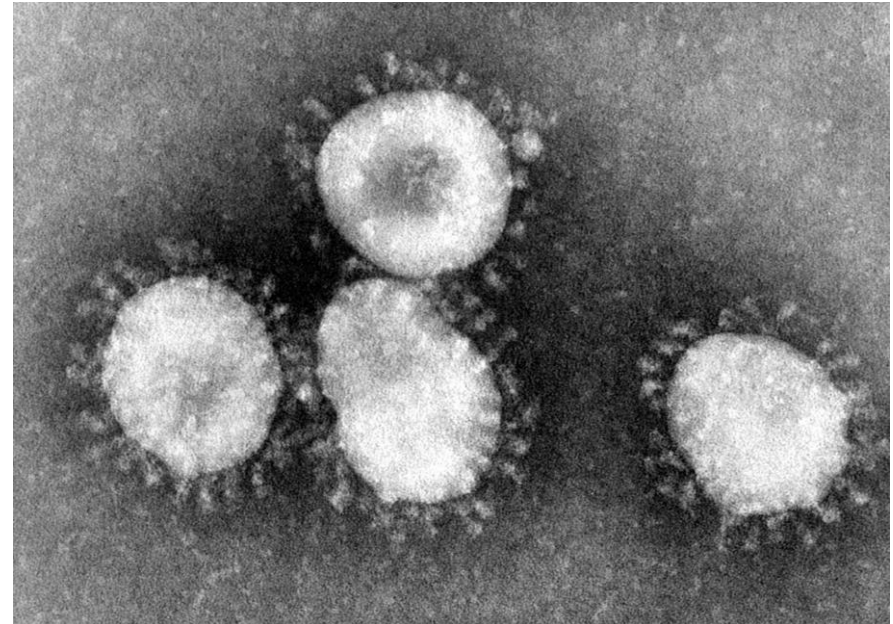
Background

- Novel coronavirus identified in December 2019 in Wuhan City, Hubei Province, China
- Initially detected as a cluster of pneumonia cases with exposure to a local open-air market



About Coronaviruses

- Enveloped, single-strand RNA virus infecting both animals and humans
- The four most common strains circulate worldwide
 - 229E
 - OC43
 - NL63
 - HKU1
- Significant contributor to the “common cold”



MERS-CoV and SARS-CoV-1

Coronaviruses have also caused epidemics in humans:

- **Severe Acute Respiratory Syndrome (SARS)**
 - 2002-2004 caused 8,093 cases with 774 deaths (9.5% CFR)
 - Cases identified in China, Hong Kong, Taiwan and Toronto, Canada
 - 8 cases identified in US residents, all with travel exposure
 - Bats identified as reservoir, likely transmitted via civets
- **Middle East Respiratory Syndrome (MERS)**
 - 2012-present caused 2,494 cases with 858 deaths (34% CFR)
 - Majority of cases in Saudi Arabia
 - 2 cases identified in US residents with travel to Saudi Arabia
 - Bats identified as reservoir, likely transmitted via camels

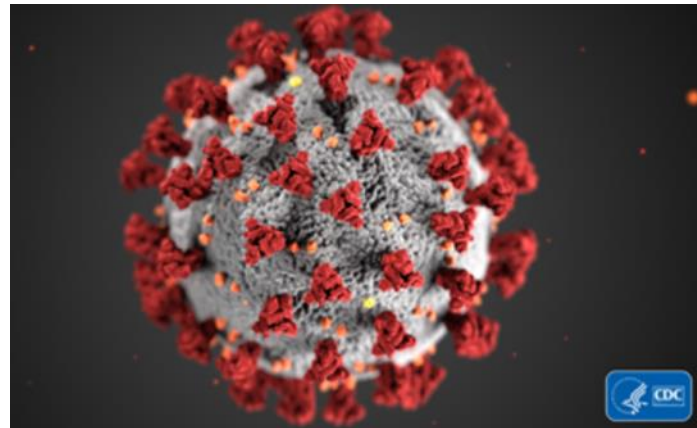
COVID-19 and SARS-CoV-2

COVID-19

- ‘CO’ stands for ‘corona,’ ‘VI’ for ‘virus,’ and ‘D’ for disease

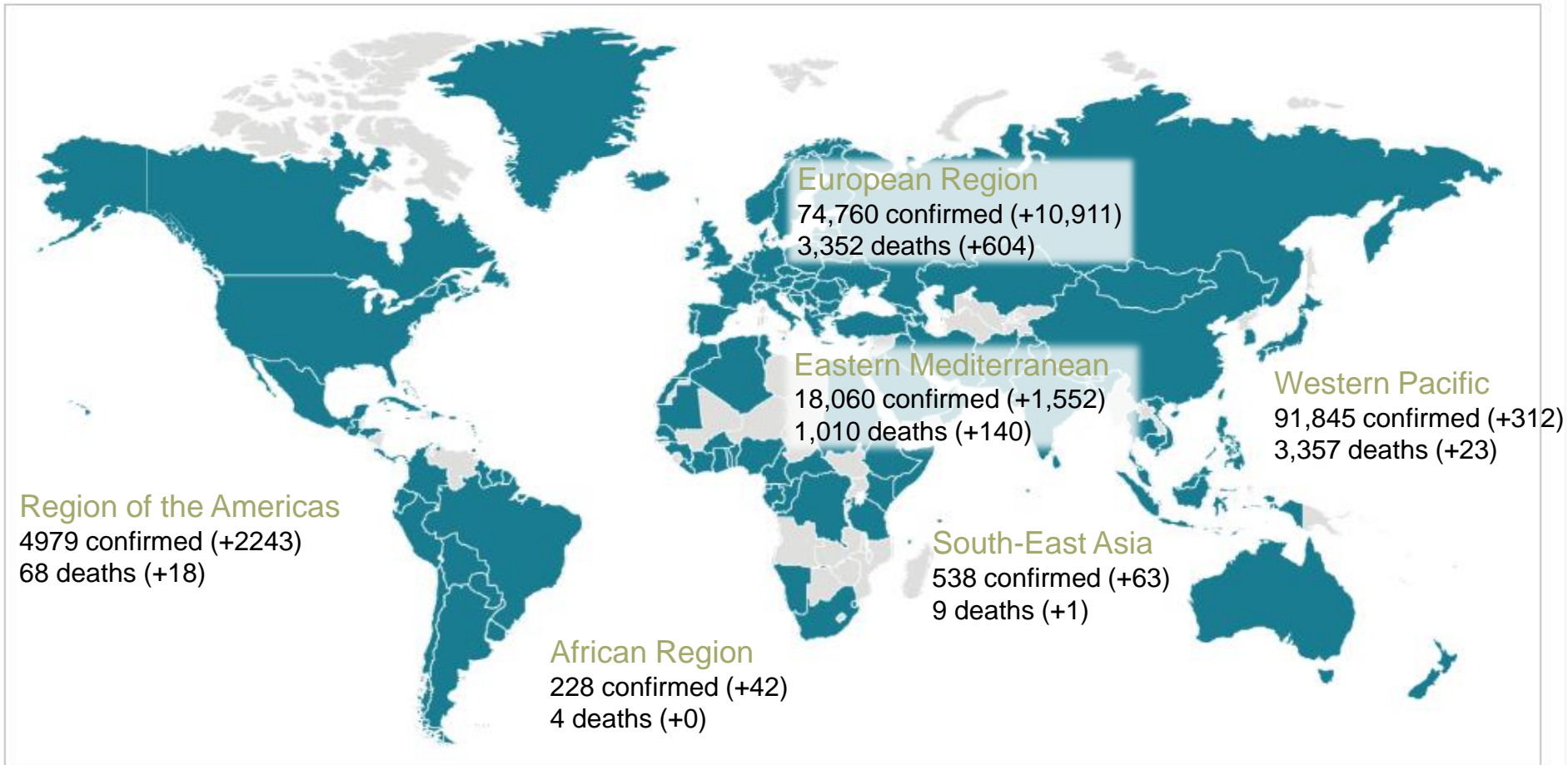
SARS-CoV-2

- The virus itself



Global Update

3.19.2020 8:00 AM



Globally 191,127 confirmed (15,123 new)

7,807 deaths (786 new)

Source: CDC, WHO, Accessed 3.19.2020

National Update

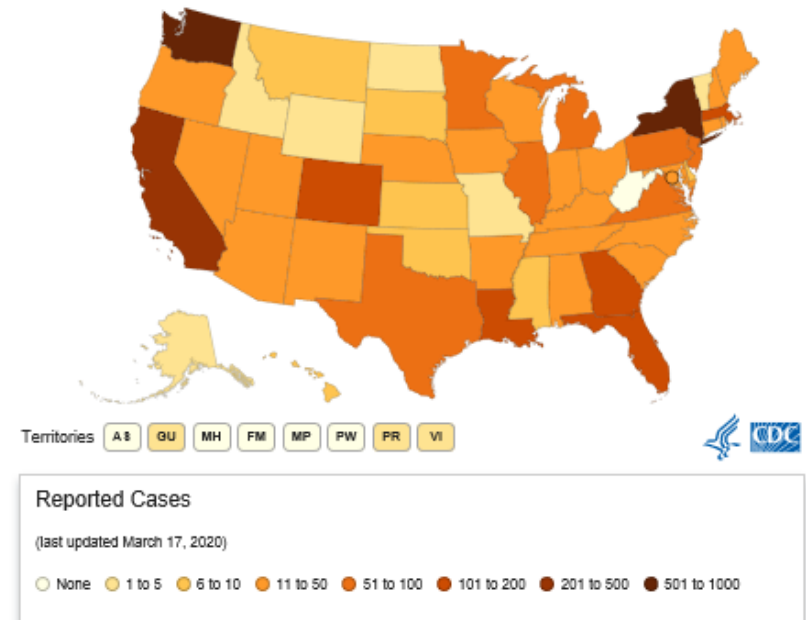
3.18.2020 8:00 AM

- First case reported in a returning traveler in Snohomish County, WA on **January 21, 2020**
- First case of suspected community transmission reported in Solano County, CA on **February 26, 2020**
- First death reported in King County, WA on **February 29, 2020**

Cases of COVID-19 Reported in the US, by Source of Exposure*†

| | |
|---------------------|--------------|
| Travel-related | 269 |
| Close contact | 276 |
| Under investigation | 6,493 |
| Total cases | 7,038 |

States Reporting Cases of COVID-19 to CDC*



COVID-19: U.S. at a Glance*

- Total cases: 7,038
- Total deaths: 97
- Jurisdictions reporting cases: 54 (50 states, District of Columbia, Puerto Rico, Guam, and US Virgin Islands)

* Data include both confirmed and presumptive positive cases of COVID-19 reported to CDC or tested at CDC since January 21, 2020, with the exception of testing results for persons repatriated to the United States from Wuhan, China and Japan. State and local public health

Sources: CDC, Washington State DOH, Solano County DPH, Accessed 3.18.2020

California Update

3.19.2020 8:00 AM

- 574 cases
 - 91 travel-related
 - 88 person-to-person
 - 142 community acquired
 - 253 under investigation
- 13 deaths (+2)
 - 2 Placer
 - 6 Santa Clara
 - 1 Sacramento
 - 1 Los Angeles
 - 1 San Mateo
 - 1 Riverside
- Age distribution
 - 0-17 years – 13 cases
 - 18-64 years – 392 cases
 - 65+ years – 188cases
 - Unknown age – 5 cases



Sources: CDPH, Accessed 3.19.2020

Local/Regional Update

3.19.2020 8:00 AM

| | Cases | Deaths | Community Transmission |
|---------------|----------|----------|------------------------|
| Mendocino | 1 | | No |
| Lake | 0 | | No |
| Sonoma | 9 | 0 | Yes |
| Napa | 0 | | No |
| Marin | 15 | 0 | Yes |
| Solano | 9 | 0 | Yes |
| San Francisco | 51 | 0 | Yes |
| Alameda | 31 | 0 | Yes |
| Contra Costa | 39 | 0 | Yes |
| San Mateo | 80 | 1 | Yes |
| Santa Clara | 175 | 6 | Yes |

Sonoma County Cases *3.19.2020 8:00 AM*

- Nine cases diagnosed among Sonoma County residents
 - 1 case in Diamond Princess traveler excluded – non resident
- 4 cases associated with travel (2 Grand Princess, 2 other)
- 4 associated with community transmission
- 1 under investigation
- NEW – Sonoma County Case Dashboard
- <https://sonomacounty.maps.arcgis.com/apps/MapSeries/index.html?appid=21a1653b79ba42039ff22bcb85fa5b19>



Sonoma County Emergency and Preparedness Information

Novel Coronavirus in Sonoma County – At a Glance

Last updated: March 18, 2020 at 5:24 pm



March 17, 2020 5:09 PM

COVID-19 Message 17 March 2019

Shelter In Place through April 7, 2020

The Sonoma County Health Officer has issued a Health Order directing residents to shelter in place effective tonight at midnight on Wednesday March 18, 2020. All individuals currently living within the County are ordered to shelter at their homes. To the extent individuals are using shared or outdoor spaces, they must at all times as reasonably possible maintain social distancing of at least six feet from any other person when they are outside their residence.

This Health Order will be in place for three weeks until April 7, 2020.

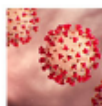
[Read More »](#)

Albergarse en su lugar de residencia a 7 de abril 2020

La Oficial de Salud del Condado de Sonoma emitió una orden de salud dirigiendo a los residentes del Condado de Sonoma a resguardarse en casa desde hoy a la media noche, miércoles 18 de marzo.

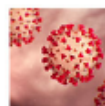
A todas las personas actualmente viviendo en el condado se les ordena resguardarse en su casa. En la medida en la que las personas necesiten usar espacios compartidos o exteriores deben en todo momento mantener una distancia social razonable de por lo menos seis pies de distancia entre ellos y otras personas cuando estén por fuera de su residencia. La orden de Salud estará en efecto por tres semanas hasta el 7 de abril de, 2020.

[Lee mas »](#)



Novel Coronavirus Update

- [Order of the Health Officer: Shelter in Place](#)
- [About Novel Coronavirus](#)
- [Novel Coronavirus in Sonoma County](#)
- [FAQs](#)
- [Press Releases](#)
- [Storymap](#)



Actualización de Novel Coronavirus

A partir de 3/18/2020 5:24 pm:

- Casos activos: 8
- Pruebas: 196
- Muertes: 0

Goals and Objectives

Key Goals for the U.S. healthcare system in response to the COVID-19 outbreak are to:

1. Reduce morbidity and mortality
2. Minimize disease transmission
3. Protect healthcare personnel
4. Preserve healthcare system functioning

Containment vs. Mitigation

Containment

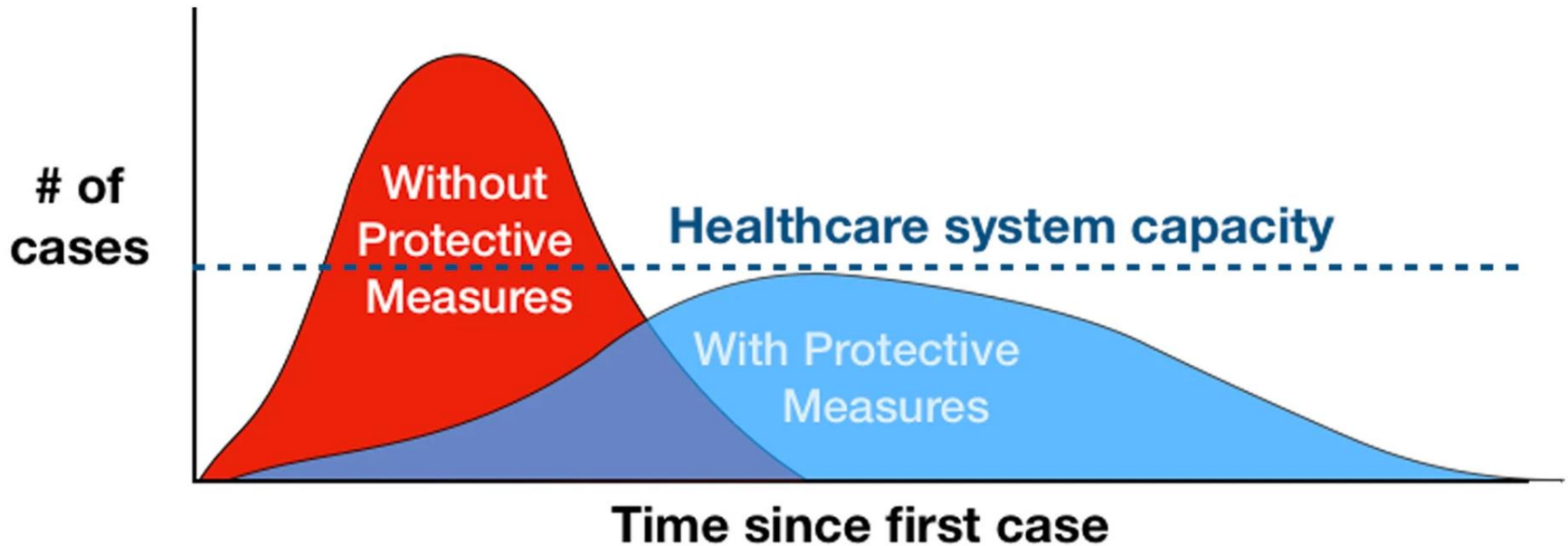
- Restrictions on movement
- Travel monitoring
- Isolation and quarantine
- Intensive case investigation

Mitigation

- Pharmaceutical Measures
- Non-pharmaceutical Interventions
 - Social distancing
 - Restrict public gatherings
 - School Closures

Community-based Interventions

1. Delay outbreak peak
2. Decompress peak burden on hospitals/infrastructure
3. Diminish overall cases and health impacts



Adapted from CDC / The Economist

Current Containment and Mitigation Strategies in Sonoma County

- Containment
 - Ongoing surveillance for COVID-19
 - Active case follow-up and 14 day monitoring of persons exposed to known cases
 - Quarantine and isolation
- Mitigation
 - Individual: hand and respiratory hygiene, self-shielding
 - Community: social distancing, restrict public gatherings

What is a Pandemic?

The WHO defines a pandemic as “an epidemic occurring worldwide, or over a very wide area, crossing international boundaries and usually affecting a large number of people.”

WHO declared COVID-19 a pandemic on March 12, 2020

Why is a pandemic different from other disasters?

- Every community will experience the pandemic as a local event
- Can happen in many places at the same time.
- A pandemic can continue to spread illnesses in waves that can last for a year or more.
- There will be limited assistance from Federal, state and other sources of mutual aid.
- The entire community will need to work together to respond effectively

CDC Training Available

Application and Integration of Nonpharmaceutical Interventions (NPI) into Pre-Pandemic Influenza Planning, Preparedness and Response

<https://www.train.org/california/course/1051645/>

Links to Guidance

- Guidance for gatherings:

https://www.cdph.ca.gov/Programs/CID/DCDC/CDPH%20Document%20Library/Gathering_Guidance_03.11.20.pdf

- Guidance for schools:

https://www.cdph.ca.gov/Programs/CID/DCDC/CDPH%20Document%20Library/School%20Guidance_ADA%20Compliant_FINAL.pdf

- Guidance for long term care facilities:

<https://www.cdph.ca.gov/Programs/CHCQ/LCP/Pages/AFL-20-22.aspx>

- Others:

<https://www.cdph.ca.gov/Programs/CID/DCDC/Pages/Guidance.aspx>