



Mendocino County Sheriff's PG&E Funding Recommendation

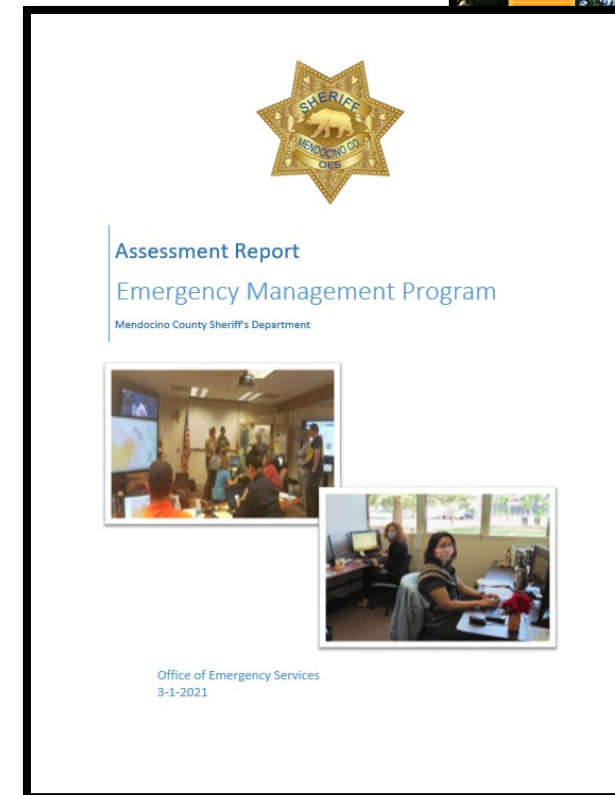
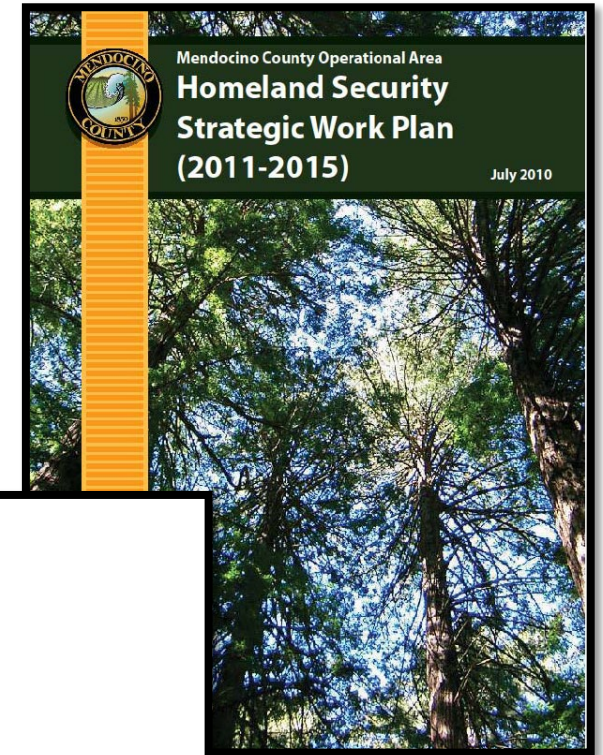
Emergency Operations Center
(EOC)

Recommendations

1. Direct county staff to allocate dedicated EOC facility space to OES.
2. Direct county staff to allocate up to 500K of PG&E funding for EOC facility modifications and equipment enhancements.

Justification

- 2010 Strategic Work Plan
- Emergency Management Program Assessment
 - Attachment B
 - Based on NFPA 1600 & EMAP standards
 - Living document



EOC Facilities Assessment

- Addresses physical features and characteristics

- Features
- Survivability
- Security
- Sustainability
- Interoperability
- Flexibility

Mendocino County EOC Facility Evaluation

Contents

▪ Background	Pg 1
▪ Features	Pg 2
▪ Survivability	Pg 4
▪ Security	Pg 5
▪ Sustainability	Pg 6
▪ Interoperability	Pg 6
▪ Flexibility	Pg 8
▪ Summary	Pg 9
▪ Budget Estimate	Pg 10
▪ Current EOC Layout	Pg 11
▪ Recommended EOC Layout	Pg 12

Background

The following checklist was developed to assist Mendocino County OES in performing the initial evaluation of the hazards, vulnerabilities, and resultant risk to their existing Emergency Operations Center (EOC). The evaluation is based on State and Federal guidance. The questions have an operations focus and are intended to address whether a requirement for a particular capability exists, whether the EOC can provide that capability, and whether the provided capability is adequate. The checklist¹ first asks questions about the physical features of a facility housing an EOC or Alternate EOC, and then addresses the characteristics of facility Features, Survivability, Security, Sustainability, and Interoperability. Descriptions of each characteristic can be found in the table below.

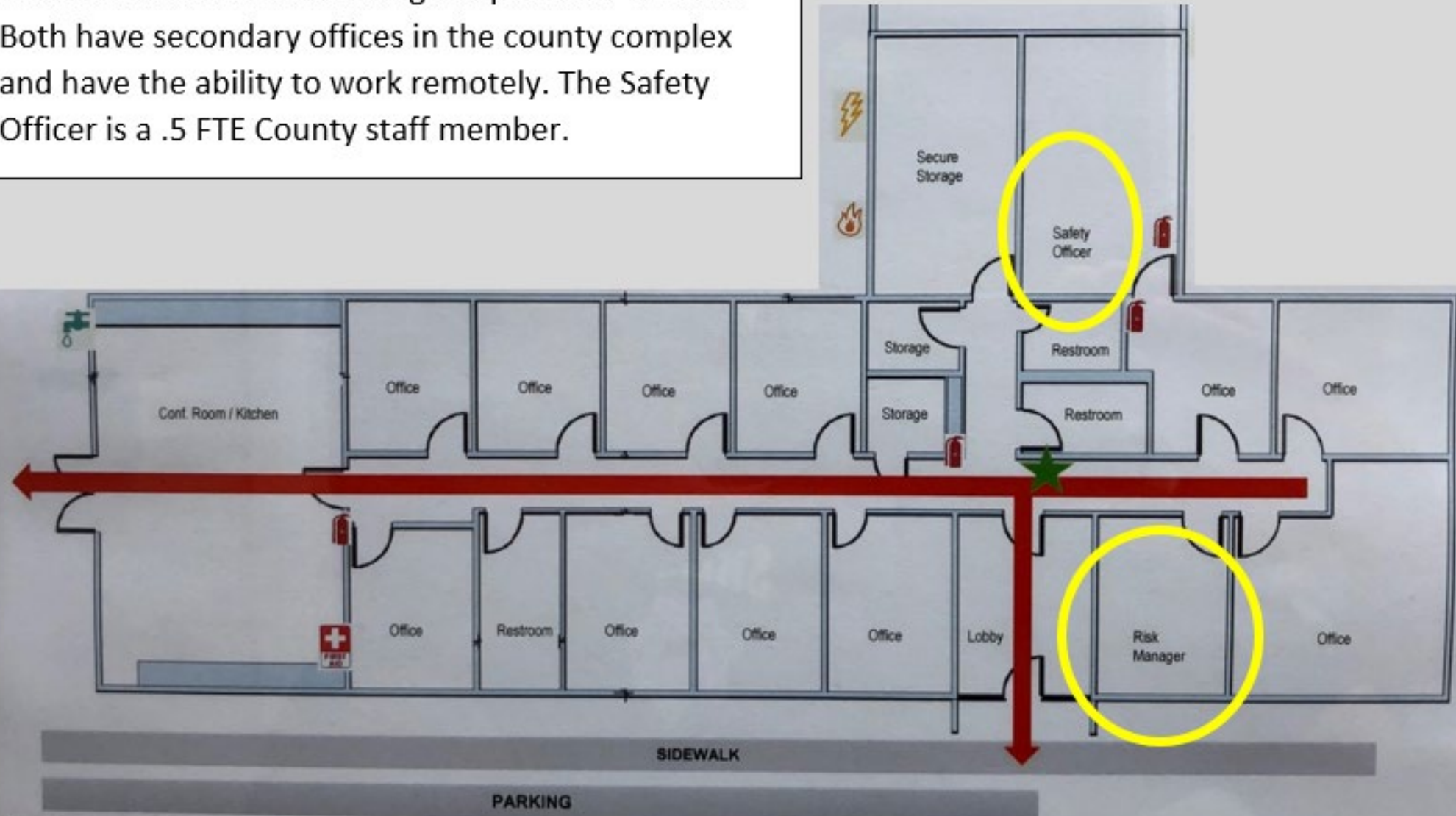
Table 1: Facility Characteristic Descriptions

Section	Description
Features	Examines the physical features of EOC facilities: sitting, structure, available space. EOC spaces to consider are an operations area, conference rooms, communications center, secure communications room, and multi-use space. Multi-use space is space that is not dedicated to EOC operations, but can quickly be made available to support EOC requirements for additional space during major disaster or surge situations.
Survivability	Sustain the effects of a realized potential risk and continue operations from the EOC or a fully-capable alternate location; (e.g., have an alternate EOC that can be activated and used if the primary is destroyed, damaged, or not accessible).

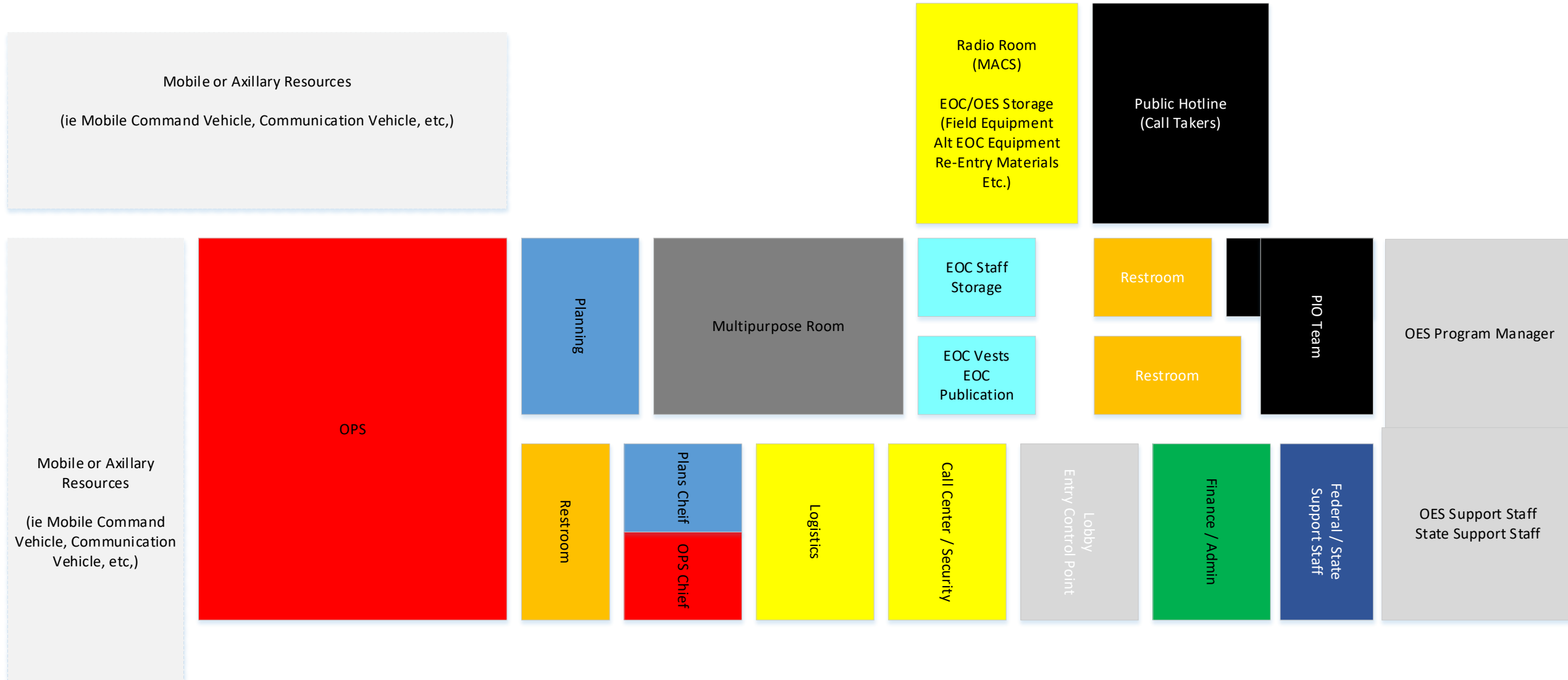
¹ The checklist/assessment is a guide and is not intended to be all-inclusive. In conducting the initial assessment, other concerns or issues that may not have been included in the checklist have been noted as a comment at the end of the assessment.

Current Usage

Currently, the Risk Manager and Safety Officer are assigned work space in the EOC. Neither employees have filled an EOC role during the past 12 + months. Both have secondary offices in the county complex and have the ability to work remotely. The Safety Officer is a .5 FTE County staff member.



Proposed EOC Layout





Question & Answers