

Biodiversity and Wildlife Connectivity in Mendocino County



Jennifer Garrison
Senior Environmental Scientist
California Department of Fish and Wildlife



Biodiversity

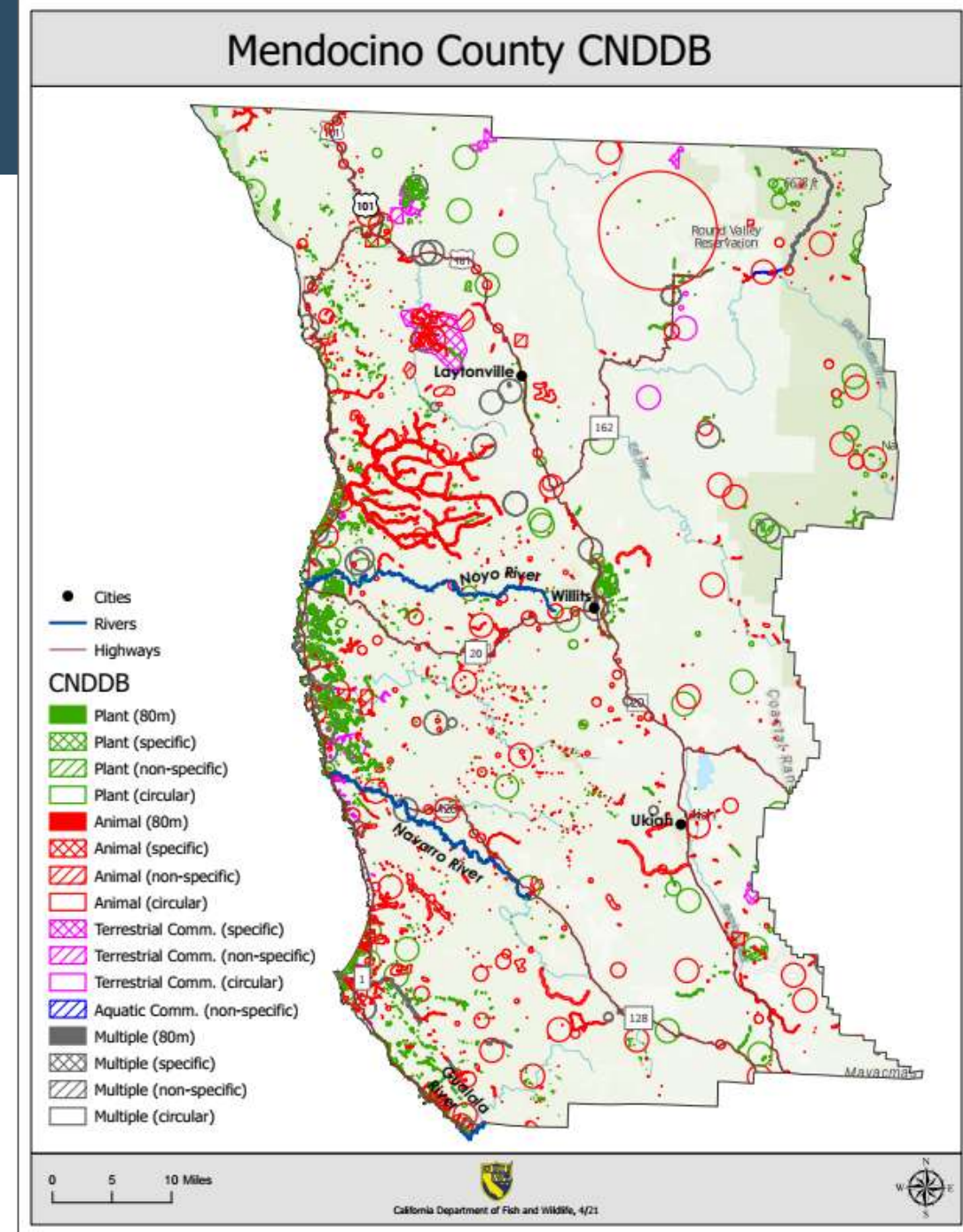
Special Status Species and Communities

- Fish (17), Amphibians (7), Mammals (20), Birds (42), Insects (8), Plants (172), Bryophytes (13), Sensitive Natural Communities (13)

Biodiversity

- Species diversity and abundance
- Biodiversity Initiative: Maintain, restore, and re-establish habitats and including wildlife corridors

Photo by Teresa Sholars



Biodiversity

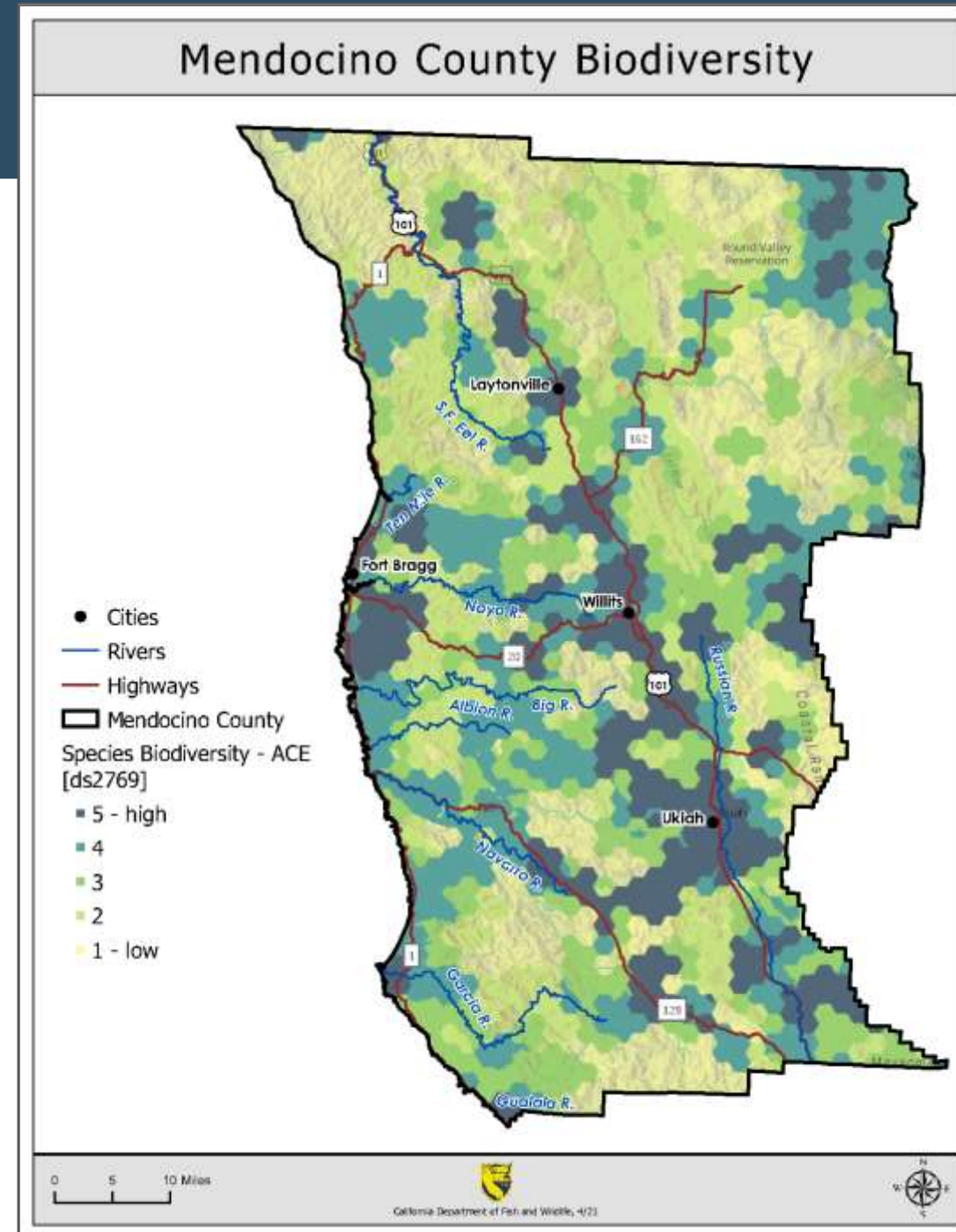
Special Status Species and Communities

- Fish (17), Amphibians (7), Mammals (20), Birds (42), Insects (8), Plants (172), Bryophytes (13), Sensitive Natural Communities (13)

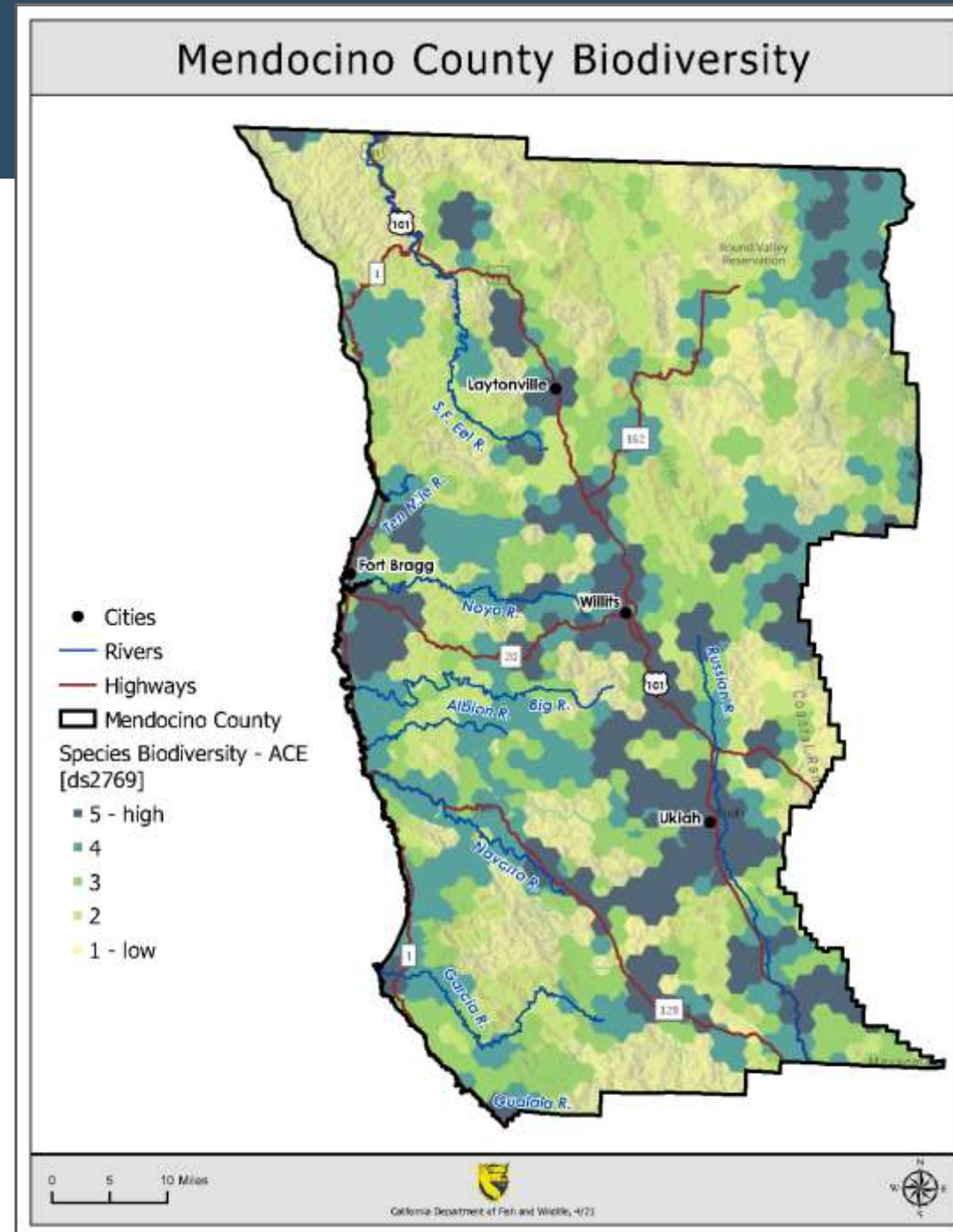
Biodiversity

- Species diversity and abundance
- Biodiversity Initiative: Maintain, restore, and re-establish habitats and including wildlife corridors

Photo by Teresa Sholars



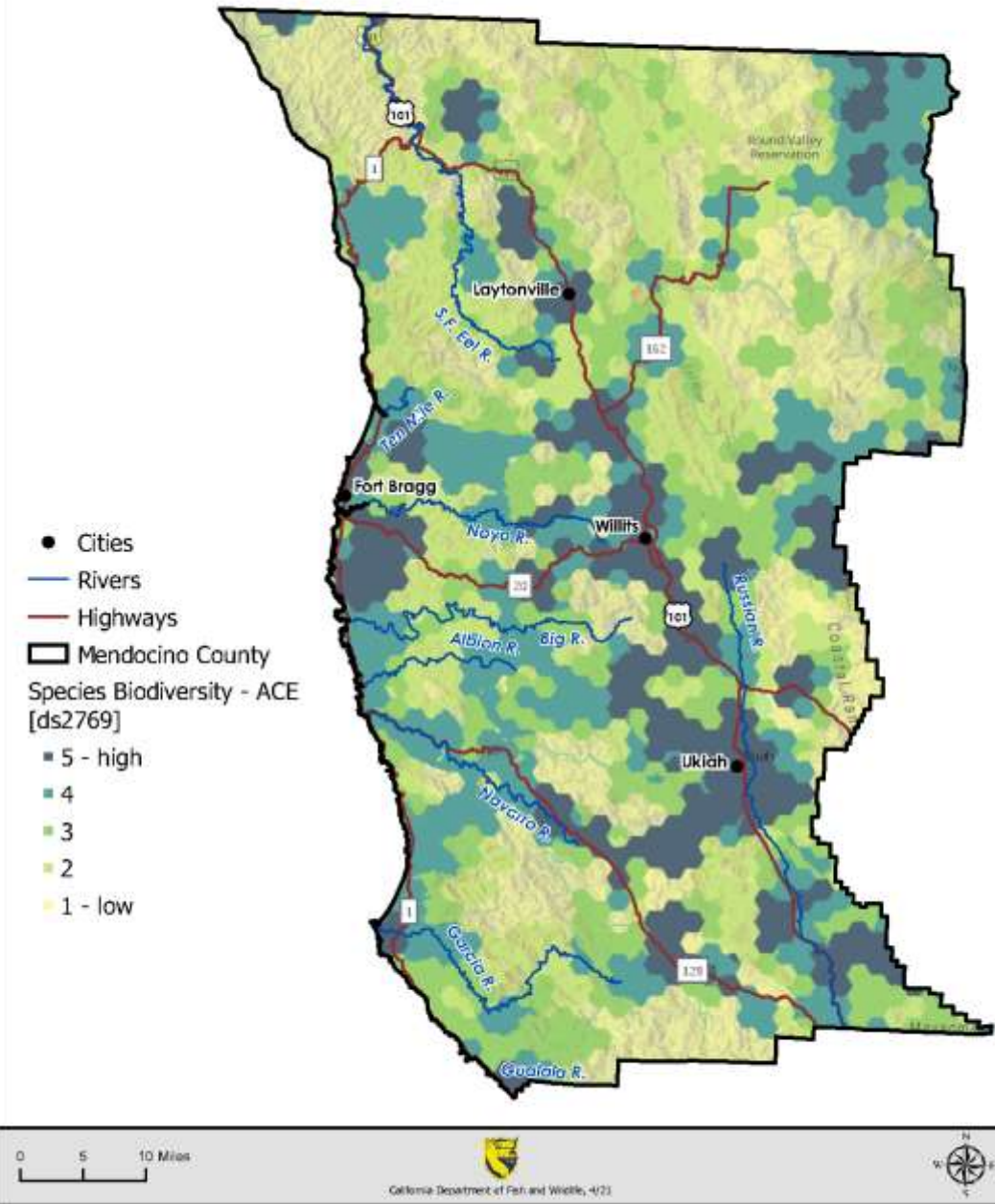
Biodiversity



Biodiversity



Mendocino County Biodiversity

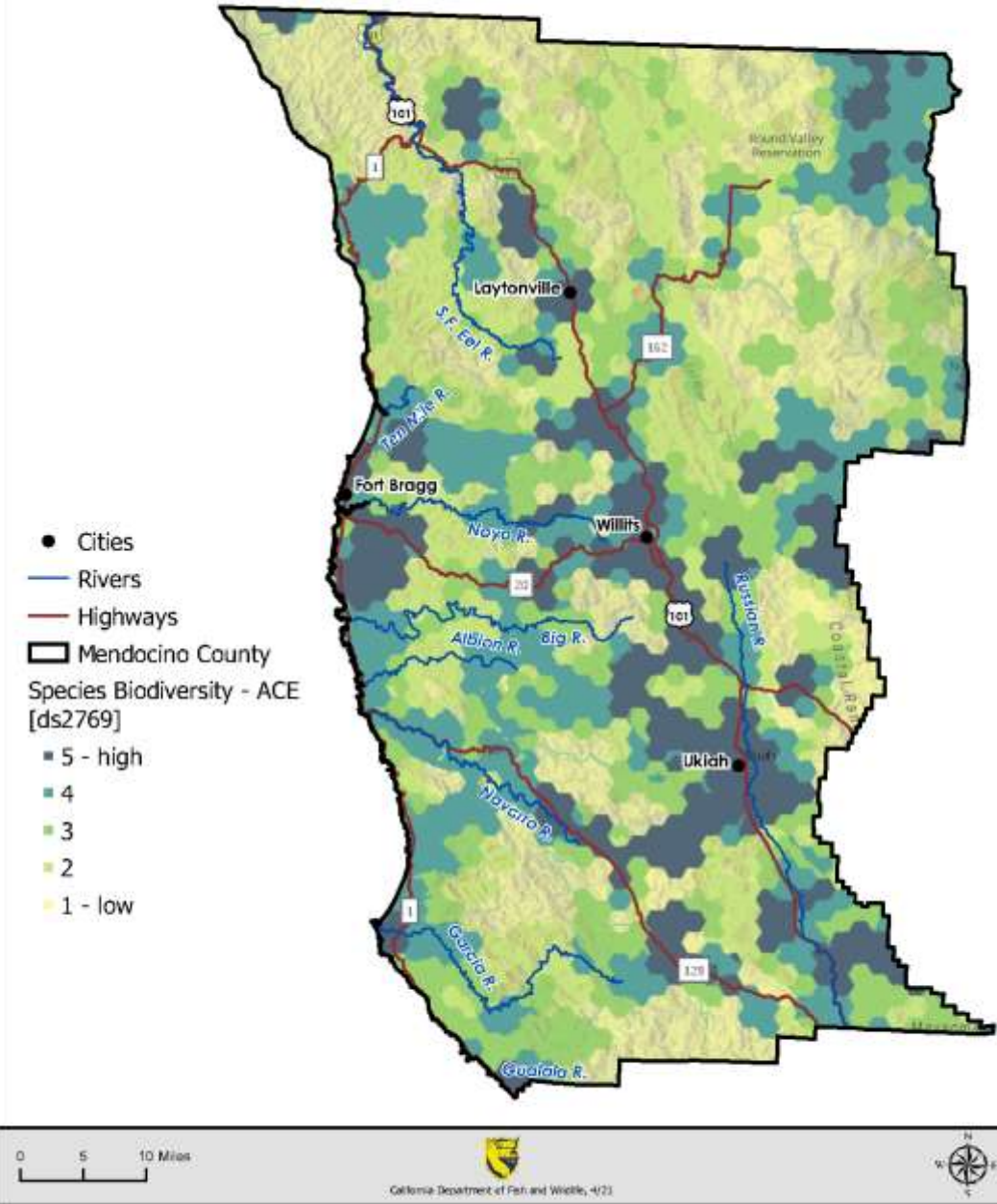


Biodiversity



Oak Woodlands

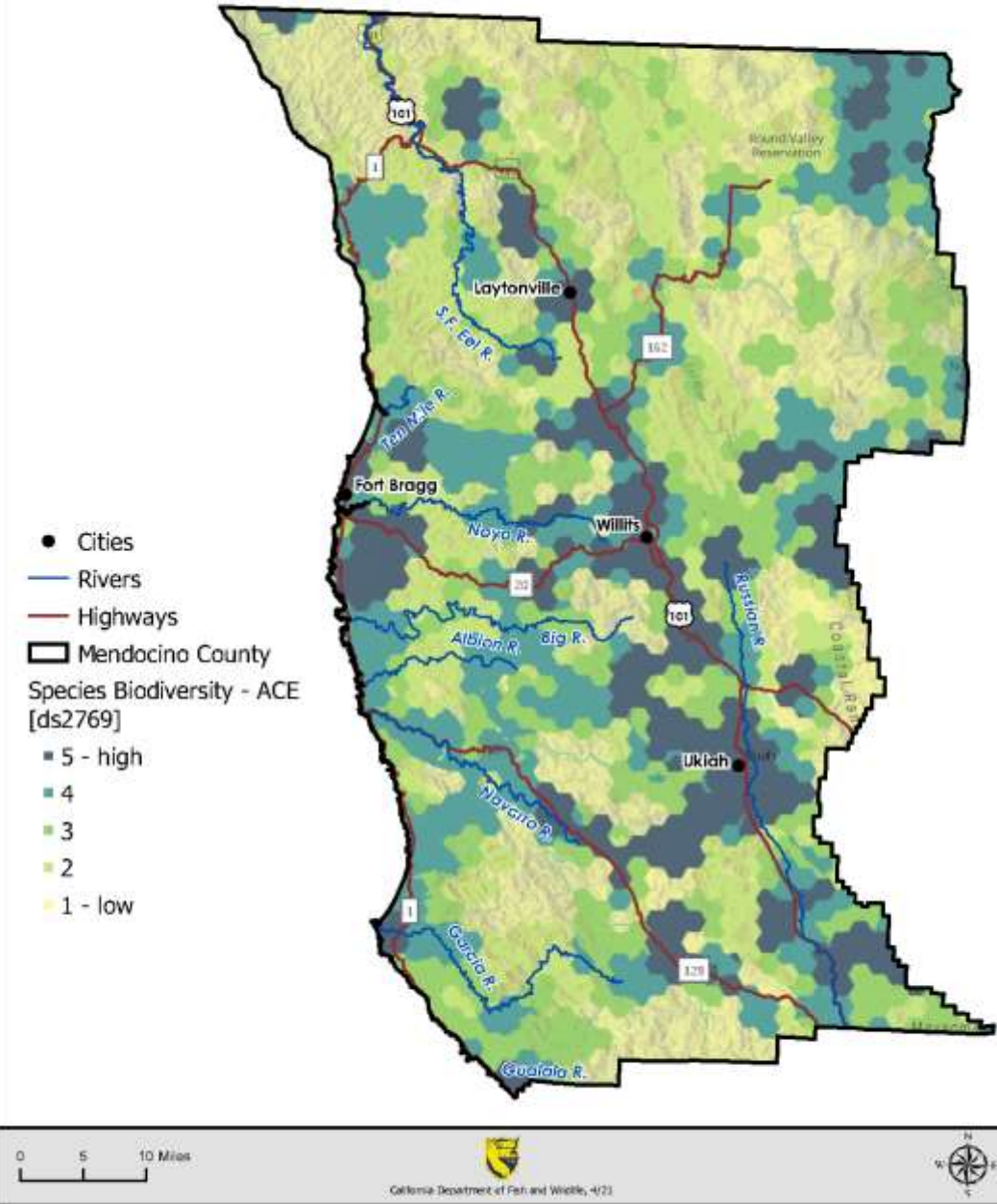
Mendocino County Biodiversity



Biodiversity



Mendocino County Biodiversity

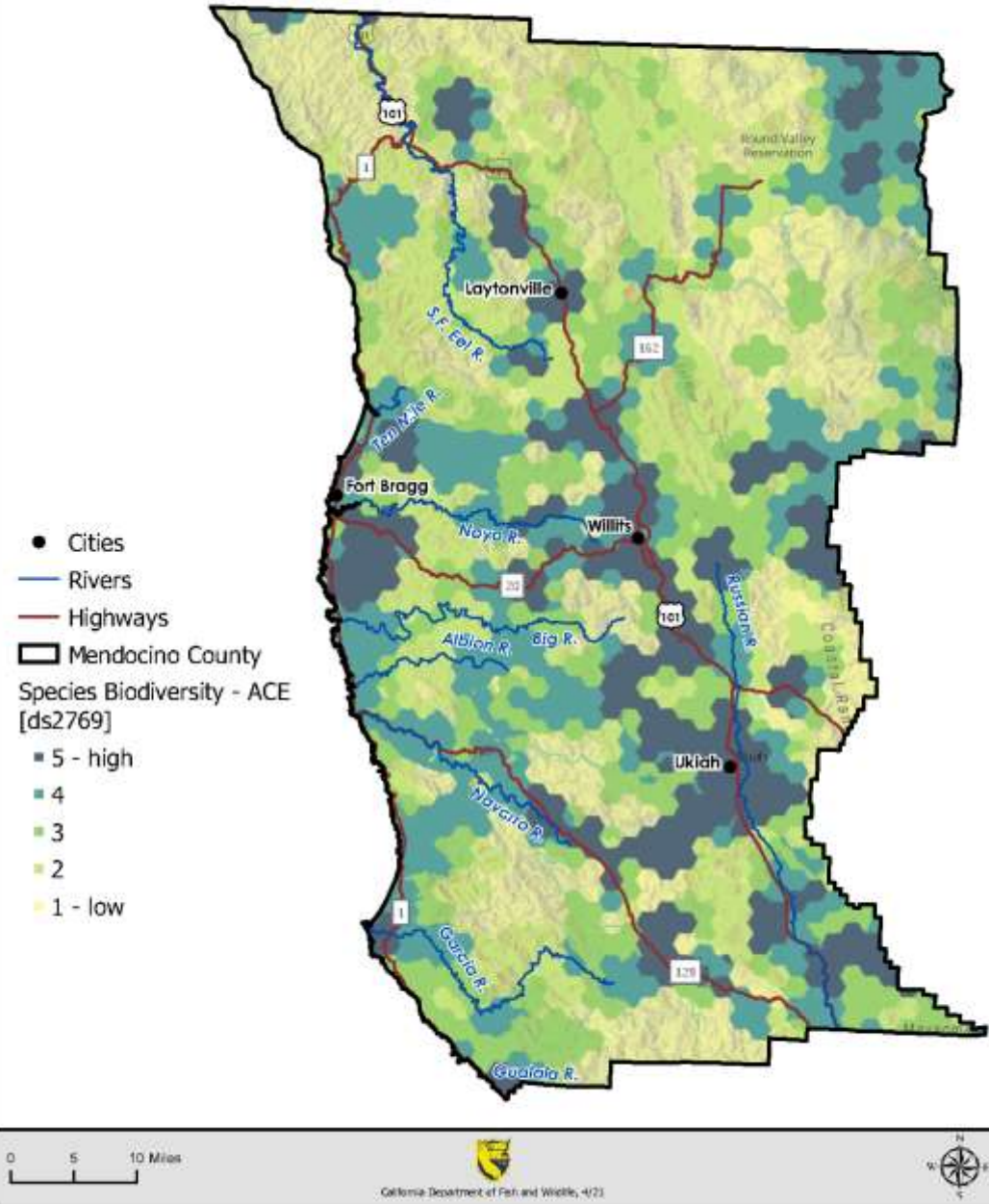


Biodiversity

(*Dudleya farinose*)

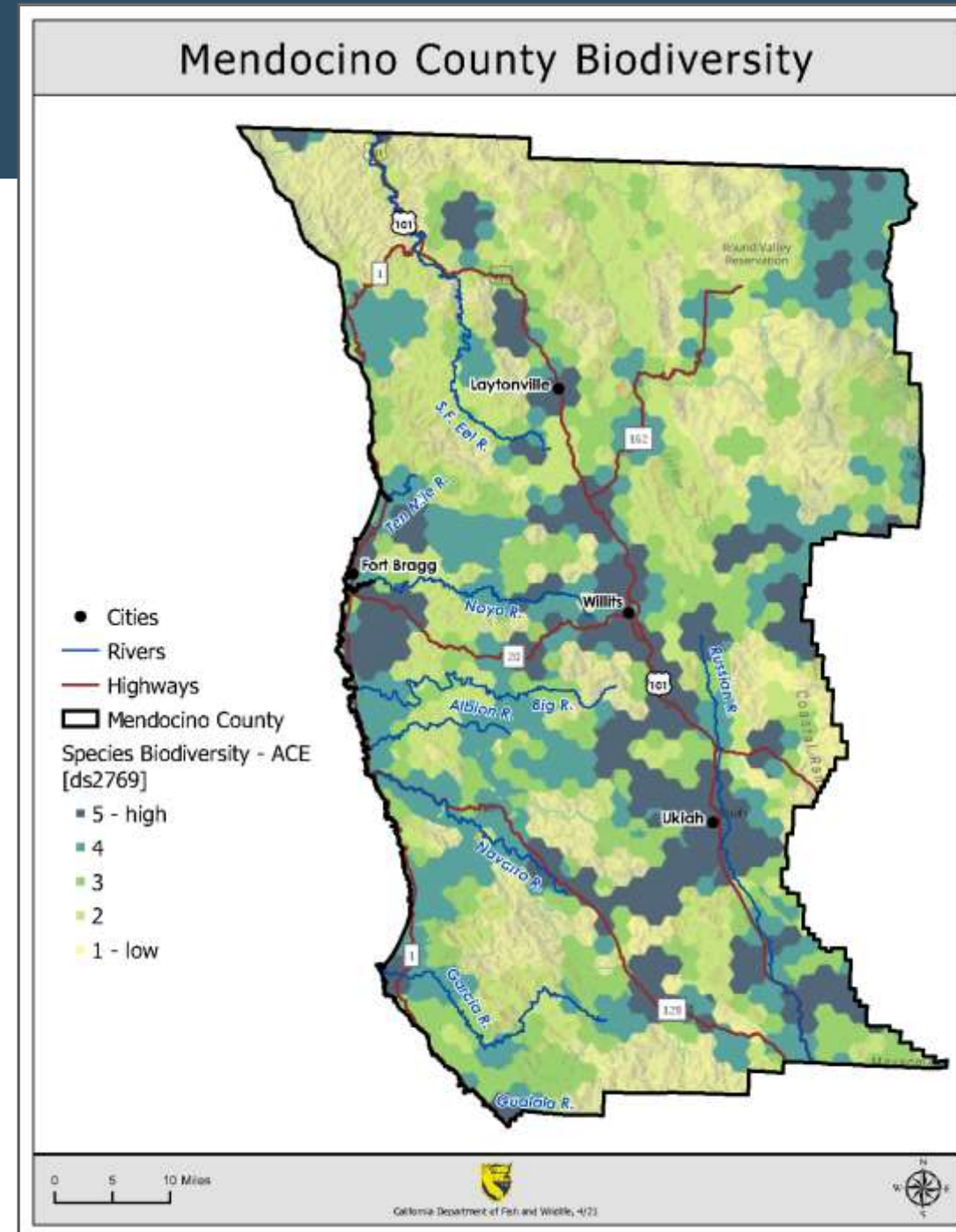


Mendocino County Biodiversity



Biodiversity

Since 2011, CDFW has funded **145 restoration grants** for planning, acquisition, and implementation projects in Mendocino County



Potential Impacts and Cumulative Effects

Water Resources

- Reduced stream flows
- Increased sediment into creeks, rivers, and wetlands
- Impact to riparian and wetlands

Wildlife and Plant Species

- Habitat loss and fragmentation
- Removal of rare plants and natural communities
- Altered wildlife behavior including foraging, breeding, and migration (noise, light)
- Loss of species' diversity and abundance
- Increased wildlife-human interaction and conflict



Potential Impacts and Cumulative Effects

Water Resources

- Reduced stream flows
- Increased sediment into creeks, rivers, and wetlands
- Impact to riparian and wetlands

Wildlife and Plant Species

- Habitat loss and fragmentation
- Removal of rare plants and natural communities
- Altered wildlife behavior including foraging, breeding, and migration (noise, light)
- Loss of species' diversity and abundance
- Increased wildlife-human interaction and conflict



Potential Impacts and Cumulative Effects

Water Resources

- Reduced stream flows
- Increased sediment into creeks, rivers, and wetlands
- Impact to riparian and wetlands

Wildlife and Plant Species

- Habitat loss and fragmentation
- Removal of rare plants and natural communities
- Altered wildlife behavior including foraging, breeding, and migration (noise, light)
- Loss of species' diversity and abundance
- Increased wildlife-human interaction and conflict



Potential Impacts and Cumulative Effects

Water Resources

- Reduced stream flows
- Increased sediment into creeks, rivers, and wetlands
- Impact to riparian and wetlands

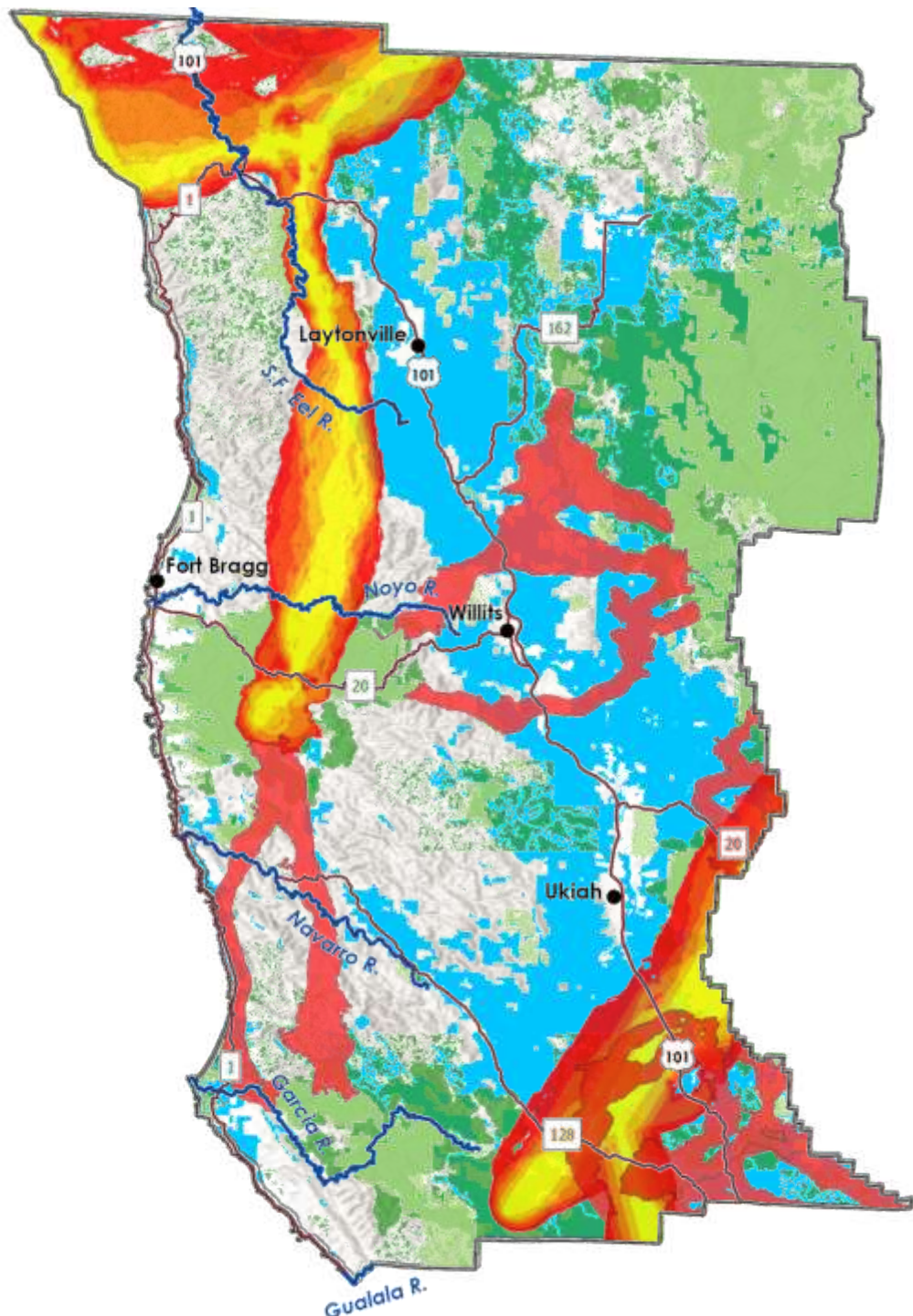
Wildlife and Plant Species

- Habitat loss and fragmentation
- Removal of rare plants and natural communities
- Altered wildlife behavior including foraging, breeding, and migration (noise, light)
- Loss of species' diversity and abundance
- Increased wildlife-human interaction and conflict



Potential, Significant Effect to Wildlife Movement

- Increased wildlife barriers and creation of pinch points due to impacted linkages
- Constricted and altered wildlife movement
- Loss of open, available habitat
- Reduced adaptability to climate change



Cannabis Cultivation

Protected Areas

Natural Landscape
Blocks

Cannabis Cultivation

Protected Areas

Natural Landscape
Blocks

Connectivity/Linkages

Connectivity/Linkages