

Community Wildfire Safety Program

MENDOCINO COUNTY BOARD OF SUPERVISORS

May 11, 2021



Safety

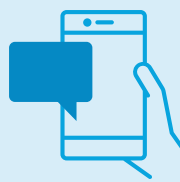
General Safety Tips



Identify two exit routes from your current work area in the event of a fire or other emergency.



“Drop, cover and hold” in the event of an earthquake.



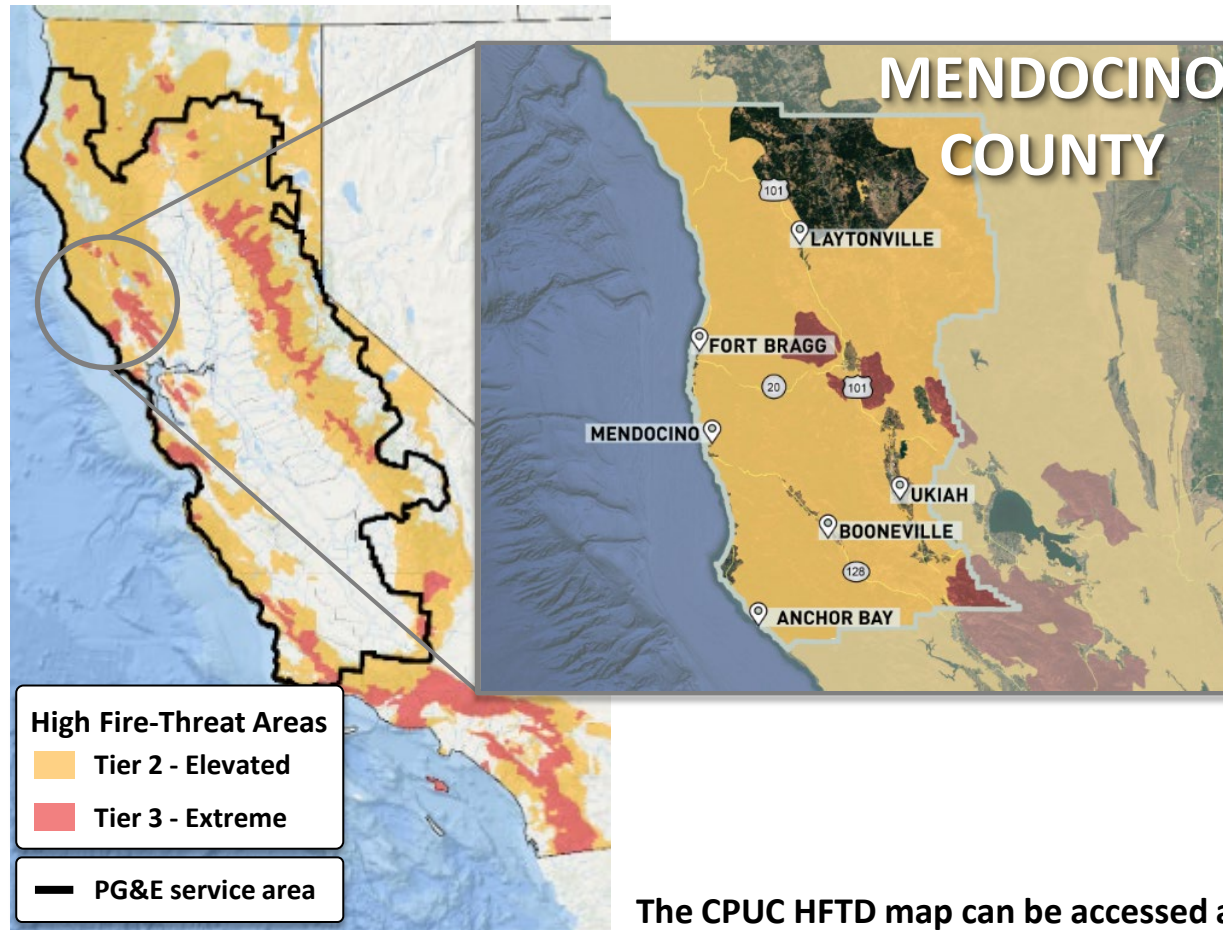
Notify emergency services if you are in danger. You can also ask for help by putting a message in the chat function of this meeting.



Follow COVID-19 safety precautions including wearing a mask in public, practicing social distancing and washing your hands to prevent the spread.

Wildfire Risks Across PG&E's Service Area

The California Public Utilities Commission (CPUC) has a map that designates areas that are most at risk for wildfire. This map helps us plan and prioritize wildfire prevention efforts.



		MENDOCINO COUNTY
	Total Customers Served	38,356
	Customers in HFTD	18,840
	Total Distribution Line Miles	2,007
	Distribution Line Miles in HFTD	1,415
	Total Transmission Line Miles	354
	Transmission Line Miles in HFTD	280

The CPUC HFTD map can be accessed at:

cpuc.ca.gov/FireThreatMaps

Source: California Public Utilities Commission

Some of the measures included in this presentation are contemplated as additional precautionary measures intended to further reduce the risk of wildfires.

Community Wildfire Safety Program



REDUCE WILDFIRE POTENTIAL

- Asset inspection and repair
- Enhanced vegetation management (EVM)
- System hardening
- Targeted device replacement
- Public Safety Power Shutoffs (PSPS)



IMPROVE SITUATIONAL AWARENESS

- Wildfire Safety Operations Center
- Weather stations
- High-definition cameras
- Meteorology
- Satellite detection
- Bolster field-based wildfire expertise for program validation



REDUCE IMPACTS OF PSPS EVENTS

- Focus on areas of highest risk
- Continuously improve based on feedback and past experience
- Further expand our ongoing coordination with and support for customers and communities
- Enhanced microgrid capability

What's New in 2021

We are continuing to harden our electric grid to reduce wildfire risks, working nonstop to lessen the impact of Public Safety Power Shutoffs (PSPS) and providing more resources to customers and communities before, during and after PSPS events.

REDUCING WILDFIRE RISKS



System hardening on:

180
CIRCUIT
MILES



Tracking
conditions with:

300
NEW WEATHER
STATIONS



Enhanced vegetation
management on:

1,800
HIGH-RISK
CIRCUIT MILES



Monitoring
for wildfires with:

135
NEW HIGH-DEF
CAMERAS

REDUCING PSPS IMPACTS



Limiting the number of customers impacted by installing **275+** additional distribution sectionalizing devices and transmission switches



Weather modeling improvements and **5 days** of forecast data



Helping to keep the power on with **10** substations prepared for temporary generation and **5** additional microgrids constructed to power key community resources

SUPPORTING CUSTOMERS AND COMMUNITIES



Customer notifications in **16 languages** and **new Address Alerts** to keep informed about any address



~**11,500 batteries** available, covering all interested low-income Medical Baseline customers in high fire-threat areas



Targeting **370 total ADA-accessible Community Resource Center** sites



Meal replacement options for customers in **46 counties**



Targeting **additional partnerships** with Community-Based Organizations to support customers with Access and Functional Needs



Mendocino County Overview

Quarterly progress updates are available at:

pge.com/wildfiresafety



WILDFIRE SAFETY	COMPLETE THROUGH 2020*		2021 PROGRESS	2021 PLANNED
System Hardening Stronger poles, covered power lines and/or targeted undergrounding	1 LINE MILE		0 LINE MILES	2 LINE MILES
Sectionalizing Devices Separating the grid into small sections for operational flexibility	26 DEVICES		0 DEVICES	4 DEVICES
Enhanced Vegetation Management Address vegetation that poses a higher potential for wildfire risk	134 LINE MILES		0 LINE MILES	129 LINE MILES
Community Resource Centers (CRC) Provide basic power needs and up-to-date information	3 INDOOR	11 OUTDOOR	ONGOING†	ONGOING†
Weather Stations Enhancing weather forecasting and modeling	50 STATIONS		2 STATIONS	ONGOING‡
High-Definition Cameras Improving real-time monitoring of high-risk areas and conditions	12 CAMERAS		1 CAMERA	ONGOING‡

*Cumulative progress from 2018 through 2020.

†CRC planning for 2021 is conducted in coordination with local agencies/tribes and is ongoing.

‡Identified on a monthly basis.

Some of the measures included in this presentation are contemplated as additional precautionary measures intended to further reduce the risk of wildfires. 2021 data as of March 31.

Public Safety Power Shutoff



What is a Public Safety Power Shutoff?

Safety is our most important responsibility. That is why we may need to turn off power as a last resort to prevent wildfires during severe weather conditions.

High winds and dangerous conditions can cause branches and debris to contact energized power lines.

This could damage our equipment and cause a wildfire.



To prevent such fires, we may need to turn off power.

This is called a **Public Safety Power Shutoff (PSPS)**.



Once severe weather has passed, we will inspect the system and repair any damage.



Once inspections and any repairs are complete, power is restored.



What Conditions Could Lead to a PSPS Event?

We carefully review a combination of factors when deciding if power must be turned off for safety. These factors include:



Low humidity levels

generally 30% and below



Forecasted high winds

above 20 mph and gusts above 30-40 mph



A Red Flag Warning

issued by the National Weather Service



Condition of dry material

on the ground and vegetation near lines



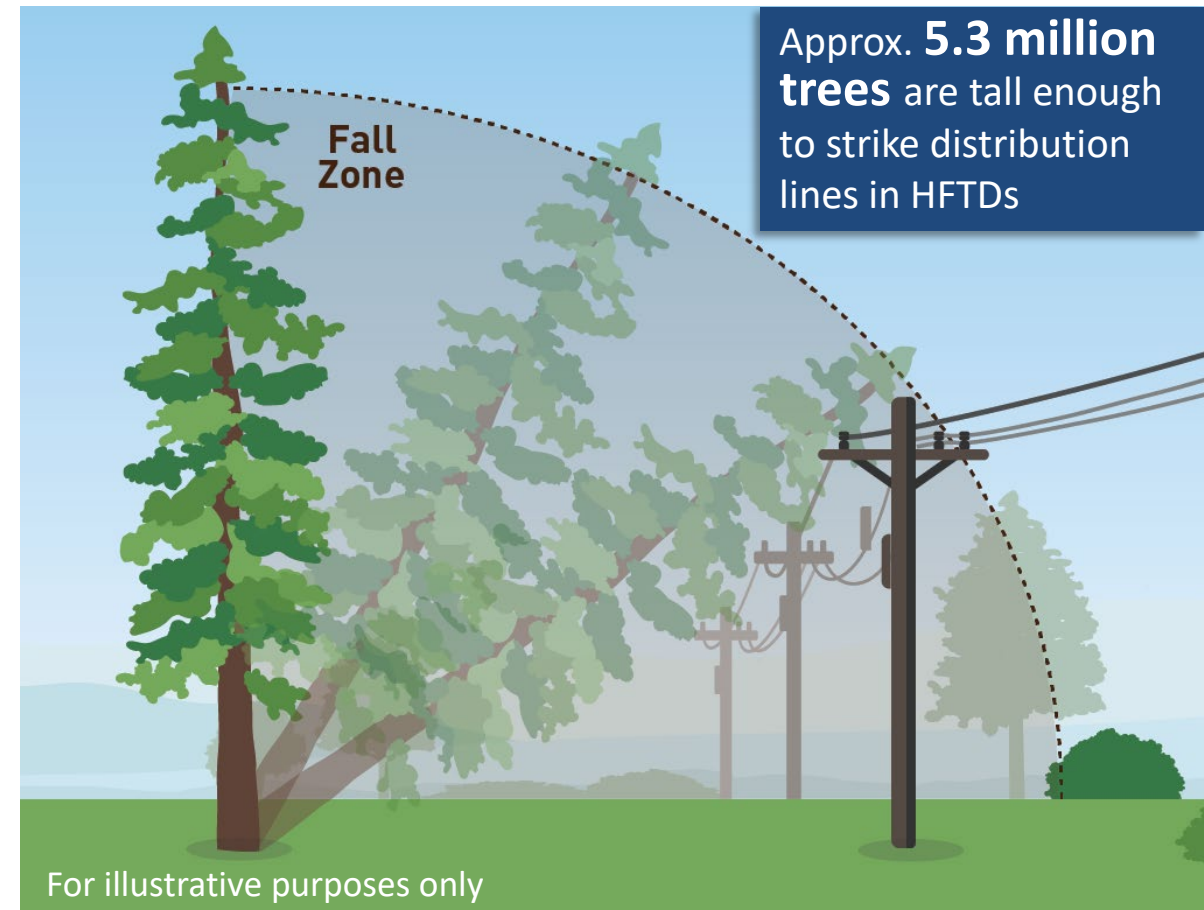
On-the-ground, real-time observations

Tree Overstrike Exposure and Potential PSPS Decision-Making

The safety of our customers and communities is our most important responsibility. After last year's wildfire season and the drier than average weather we are experiencing, we have developed proposed additional criteria for our PSPS program, consistent with conditions proposed by the federal court.

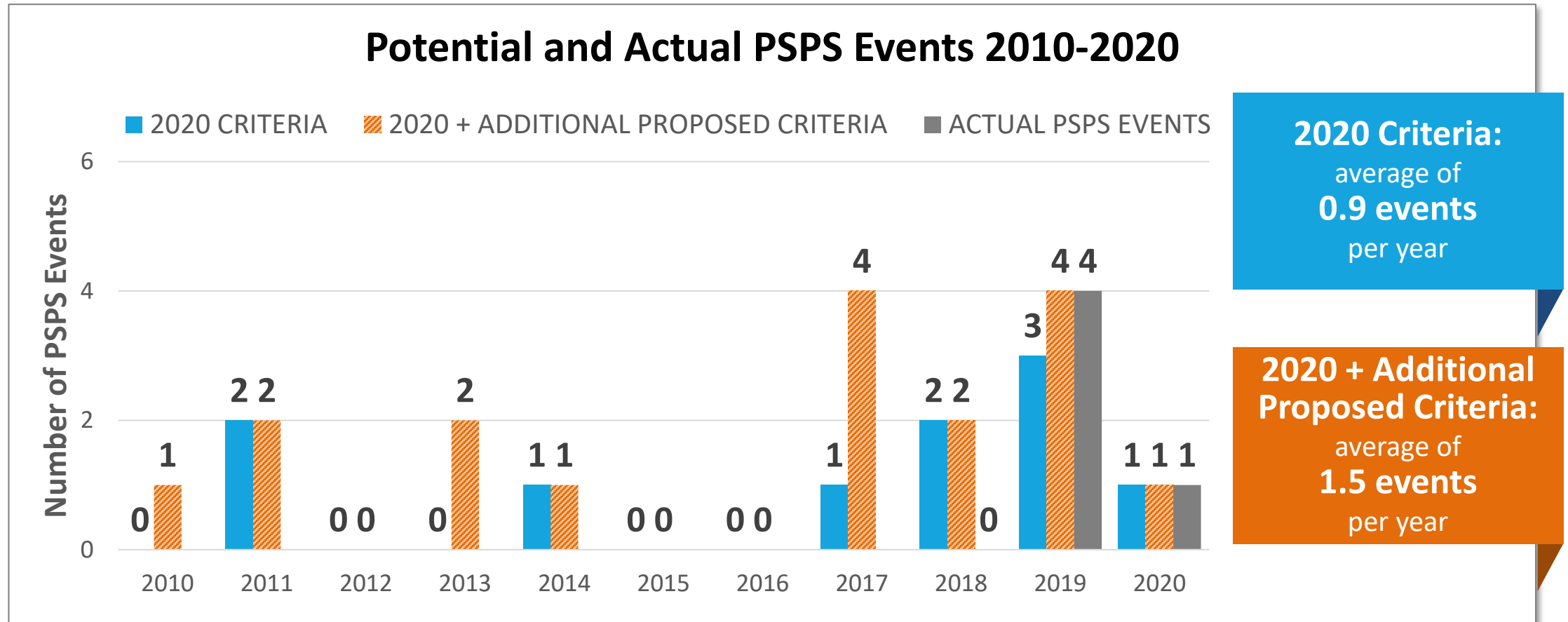
To reduce the risk of major wildfires, PG&E may turn off power on distribution lines where there are large amounts of trees tall enough to fall into electric lines during severe weather.

- ✓ Customers who live in areas of the highest wildfire risk may experience more frequent PSPS events compared to last year's weather conditions.
- ✓ We are hyper focused on providing more resources to our customers and communities before, during and after a PSPS event.
- ✓ We are in conversations with the court and CPUC regarding this additional criteria and we will share additional information as soon as possible.



PSPS Lookback Utilizing Proposed Criteria – Mendocino County

The chart below uses 11 years of weather data to show the number of potential PSPS events based on 2020 PSPS criteria compared to the additional criteria proposed for this year.



Note: This information is for planning purposes only and additional data analysis is underway. Future events will be dependent on weather conditions.

How Will Customers be Notified?

When severe weather is forecast, we provide advance notice prior to turning off power and updates until power is restored.

Timing of Notifications (when possible)



Notifications sent via automated calls, texts and emails.

We will also use [pge.com](https://www.pge.com), social media and will inform local news and radio.



@pacificgasandelectric



@PGE4Me



@pacificgasandelectric

NEW FOR 2021 | ADDRESS ALERTS

can notify you and your family members about a PSPS for any location.

Sign up for addresses you care about, such as:

- ✓ Your work or business
- ✓ Your child's school or daycare
- ✓ The home of a friend or loved one

Visit [pge.com/addressalerts](https://www.pge.com/addressalerts)



Customer Preparedness and Resources

We are increasing resources to help customers and communities before, during and after PSPS events:

	Partnerships with 250+ Community-Based Organizations (CBOs) to provide emergency preparedness information and PSPS event assistance
	Sponsored food replacement through partner food banks and Meals on Wheels organizations
	California Foundation for Independent Living Centers (CFILC) providing emergency planning, portable backup power, accessible transportation, hotel stays and food stipends
	Providing portable backup batteries for low-income Medical Baseline customers in high fire-threat areas
	Generator rebate programs offered to customers who depend on well water pumps and live in high-fire threat areas
	Providing better information about when power will be turned off and back on in 16 languages

Mendocino County Community-Based Organizations

CFILC

- Disability Services and Legal Center

Meals on Wheels

- Coastal Seniors

Other

- California Council of the Blind

In-Language

- Movimiento Cultural del a Union Indígena
- KDTV Univision
- Radio Bilingue (Non-Profit)
- KBBF Radio (Non-profit)
- La Voz
- Alianza News
- Russian American Media
- KBTv-Crossings TV
- ABS-CNB



Additional Potential Partner:
The Fort Bragg Food Bank

Community Resource Centers

During Public Safety Power Shutoff events, we open **Community Resources Centers (CRCs)** where customers can access resources and up-to-date information.

Customer Resources

- Wi-Fi
- ADA-accessible restroom
- Bottled water
- Device charging
- Snacks
- Cooling/heating*
- Seating*
- Ice*
- Mobile battery chargers

**Indoor locations only*



For more information about CRCs and where to find a location in your area before and during a PSPS event, visit pge.com/crc

COVID-19 CONSIDERATIONS

To keep our customers and communities safe, **all CRCs reflect appropriate COVID-19 health considerations** and state and county guidelines.

- **Facial coverings are required**
- **Physical distancing** and limits on the number of visitors at any time are required
- **Temperature checks** are administered before entry into indoor facilities
- **Surfaces are regularly sanitized**

More Information and Tools to Prepare

For more information about our wildfire safety efforts, visit pge.com/wildfiresafety

For specific information, please consider the following:



Would you like to receive PSPS notifications but are not the PG&E account holder?

Sign up to receive PSPS alerts for any address at

pge.com/addressalerts



Do you need information in a language other than English? Find assistance at

pge.com/mywildfirealerts



Do you want to learn more about the live weather conditions we are tracking in your area?

Get up-to-the-minute weather information at

pge.com/weather



Are you looking for tools and activities to help children prepare for an emergency? Visit our interactive site at

kidsemergencysafety.com



Are you looking for more information on how to stay safe before and during a PSPS event?

Learn more about wildfire risks and how to prepare for emergencies at

safetyactioncenter.pge.com



Do you need backup power? Check out backup power options, safety tips and financing at

See if you qualify for the Portable Battery Program at

pge.com/backuppower

pge.com/storage

Thank You

For more information, please:

- Call us at **1-866-743-6589**
- Email us at **wildfiresafety@pge.com**
- Visit **pge.com/wildfiresafety**



Appendix



Disability Disaster Access and Resources Program

We are collaborating with the Disability Disaster Access and Resources Program (DDARP) to provide qualifying customers with targeted outreach, personalized emergency planning support, energy needs assessments and in-event Public Safety Power Shutoff support. In-event support can include the following support based on customer needs:



Response to Escalations

received through PG&E's call center



Hotel Accommodations



Accessible Transportation

to hotels and Community Resource Centers



Food Vouchers



Portable Backup Batteries

During 2020 PSPS events, the following resources were provided:

~1,700 customer assessments

~1,000 batteries provided

~560 hotel accommodations provided

~900 food vouchers provided

~30 accessible transit rides provided

Data is subject to change and is based on best available information at this time.

Learn more about DDARP by visiting




disabilitydisasteraccess.org



Portable Battery Program

PG&E is also conducting PSPS emergency preparedness outreach and energy needs assessments to support low-income Medical Baseline customers in high fire-threat areas with critical medical equipment and delivering fully subsidized portable battery solutions to eligible customers.

To date, this program has included the following:

	Establishing relationships with seven external battery delivery partners		Assessing over 8,800 customers
	Providing outreach to ~22,000 customers		Providing over 5,550 batteries to customers



Generator Rebate Program

Launched in late 2020, this program provides customers who depend on a well water pump and live in high fire-threat areas with a single rebate for purchasing a qualified portable power generator.



\$300 rebate for eligible customers.

\$500 rebate for eligible customers who are also participants in the CARE or FERA program.



Rebates are offered through PG&E's backup power marketplace located at **pge.com/backuppowers**.

Over 100 customers have already taken advantage of the rebate.





Learn more about PG&E's Generator Rebate Program by visiting

pge.com/backuppowers



Financial Assistance and Support Programs

Since March 2020, we implemented a series of emergency protections to support customers who have been impacted by the pandemic that are currently set to expire on June 30, 2021.

	Pause on service disconnections for non-payment
	Pause on post-enrollment verification and re-enrollment requirements for CARE and FERA programs
	Waive security deposits for small commercial customers
	Medical Baseline Program recertification



If you have questions about how the end of any of these protections may impact you, or if you are struggling to pay your bill, PG&E can help you find payment programs, financial assistance, and other support programs.

For more information, visit:

pge.com/covid19



Medical Baseline Program

PG&E's Medical Baseline Program is an assistance program for residential customers who rely on power for certain medical conditions.

Assistance offered:

- **Extra notifications** in advance of a PSPS event, including in-person door knocks by a PG&E representative if positive contact has not been made
- **A lower rate** on monthly energy bills

Examples of Qualifying Medical Conditions and Qualifications:

- Asthma/Sleep Apnea
- Respirators
- Multiple Sclerosis
- Special Heating/Cooling Needs
- IPPB/CPAP Machines
- Hemodialysis Machine

NEED EXTRA HELP BUT DON'T QUALIFY FOR MEDICAL BASELINE?

Self certify as a vulnerable customer.

pge.com/vcstatus

Applying for Medical Baseline



Submit the “Medical Baseline Allowance” application form. Forms can be found by visiting pge.com/medicalbaseline

— OR —



Mail the completed and signed application form to:

PG&E
Attention: Medical Baseline
 P.O. Box 8329
 Stockton, CA 95208

Due to novel coronavirus (COVID-19) shelter-at-home guidelines and changing medical practitioner priorities, **customers can now self-certify their eligibility to enroll in the Medical Baseline Program.** A signature from a qualified medical practitioner is not required to apply.

Types of Outages

PG&E customers may experience outages for different reasons.

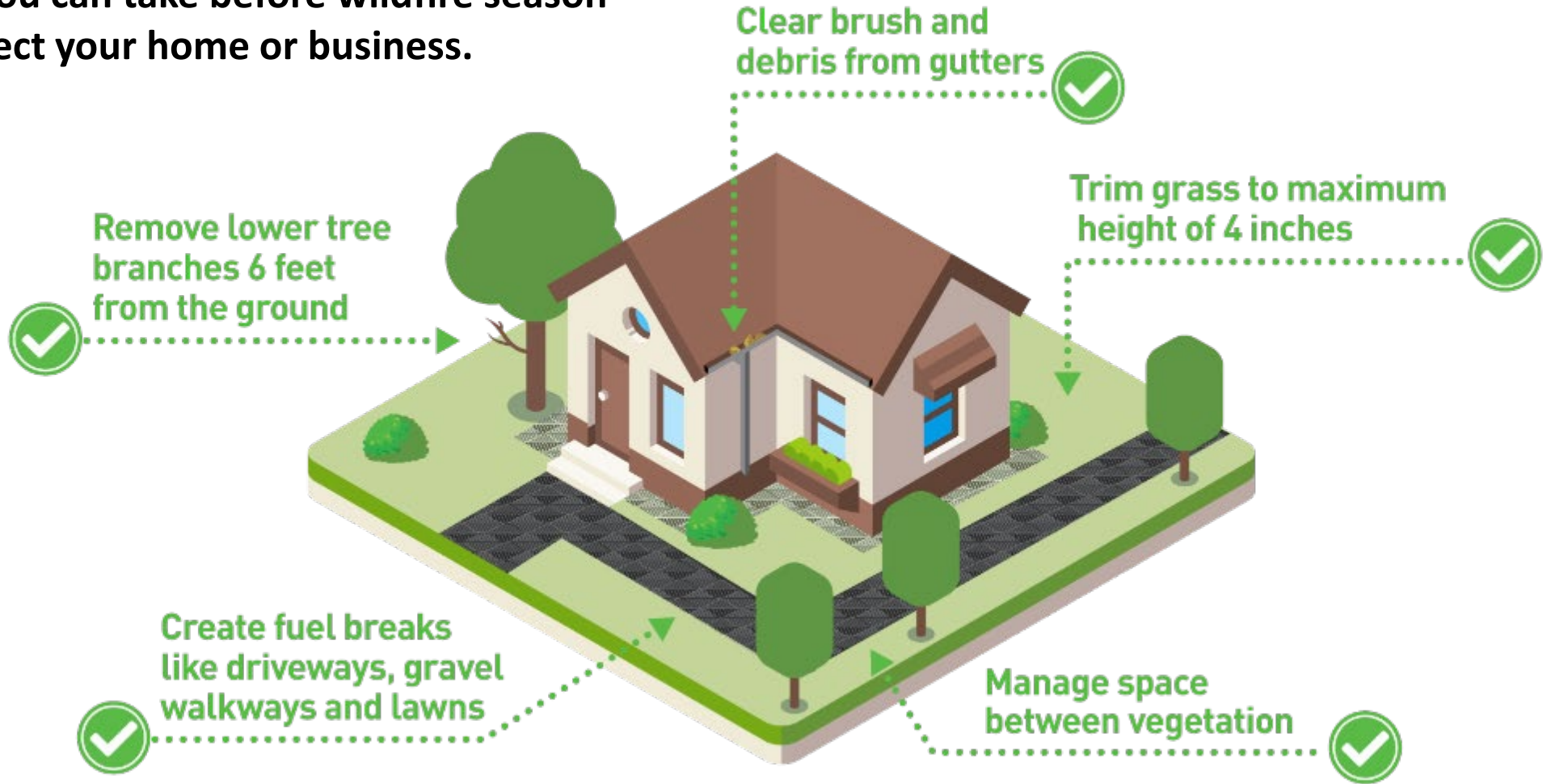
Why is Power Shut Off?	Rotating Outages	Emergency Repairs	Planned Maintenance	Active Wildfires	Public Safety Power Shutoff
How Will We Inform Customers?	Advanced notification/regular updates <ul style="list-style-type: none"> ▪ Phone calls* ▪ Emails ▪ Texts ▪ Social media ▪ News releases ▪ Local/Tribal government outreach 	Updates after and during outages <ul style="list-style-type: none"> ▪ Phone calls ▪ Texts ▪ Emails 	10-day advance notification	Updates after or during outages <ul style="list-style-type: none"> ▪ Phone calls ▪ Texts ▪ Emails 	Advanced notification/regular updates <ul style="list-style-type: none"> ▪ Phone calls* ▪ Emails ▪ Texts ▪ Social media ▪ News releases ▪ Local/Tribal government outreach ▪ CBO** outreach
Who Makes the Decision?	CAISO, the state's grid operator	N/A	PG&E	CAL FIRE or first responder agencies	PG&E

*Via interactive voice recordings (IVR)

**Community-based organization

Creating Defensible Space

Steps you can take before wildfire season to protect your home or business.



For more tips to protect your home from a wildfire, visit:

[ReadyForWildfire.org](https://www.ReadyForWildfire.org)