

Mendocino County

Public Health

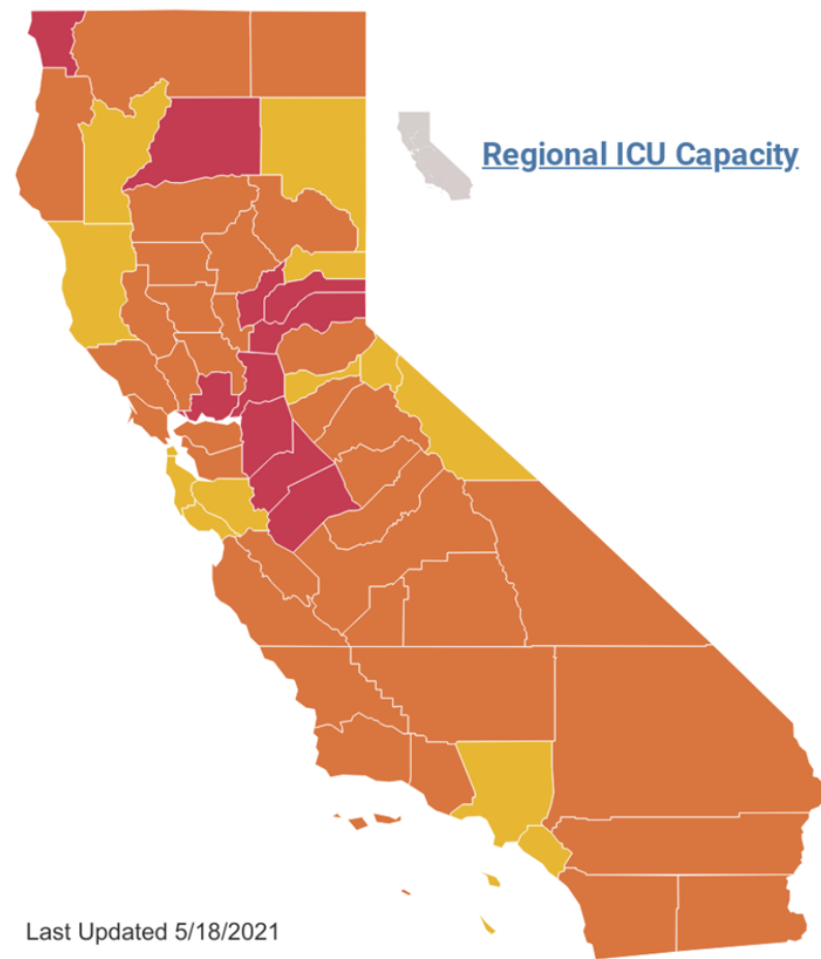
COVID Update

MENDOCINO
COUNTY'S TIER
STATUS = **YELLOW**

MOST RECENT
METRICS ARE
FROM MAY 2-8:

DAILY CASE RATE:
3.2 PER 100,000 (**19**
CASES)

TESTING POSITIVITY:
2.4%



STATEWIDE METRICS

3.2 New COVID-19 positive cases per day per 100K

1.1% Positivity rate (7-day average)

32.8% ICU availability

Find a county

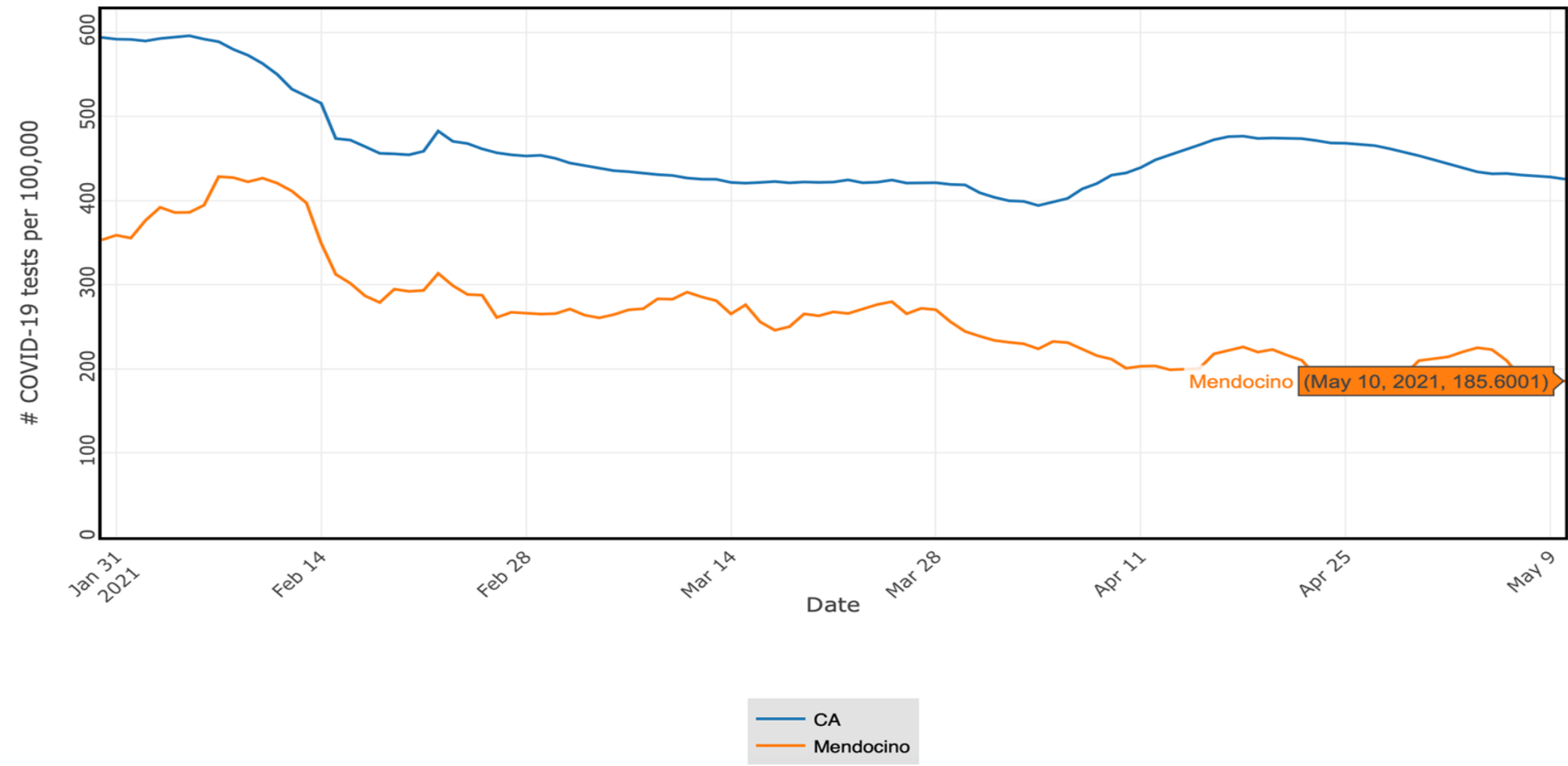
Highlight County

Click on the map for updated metrics

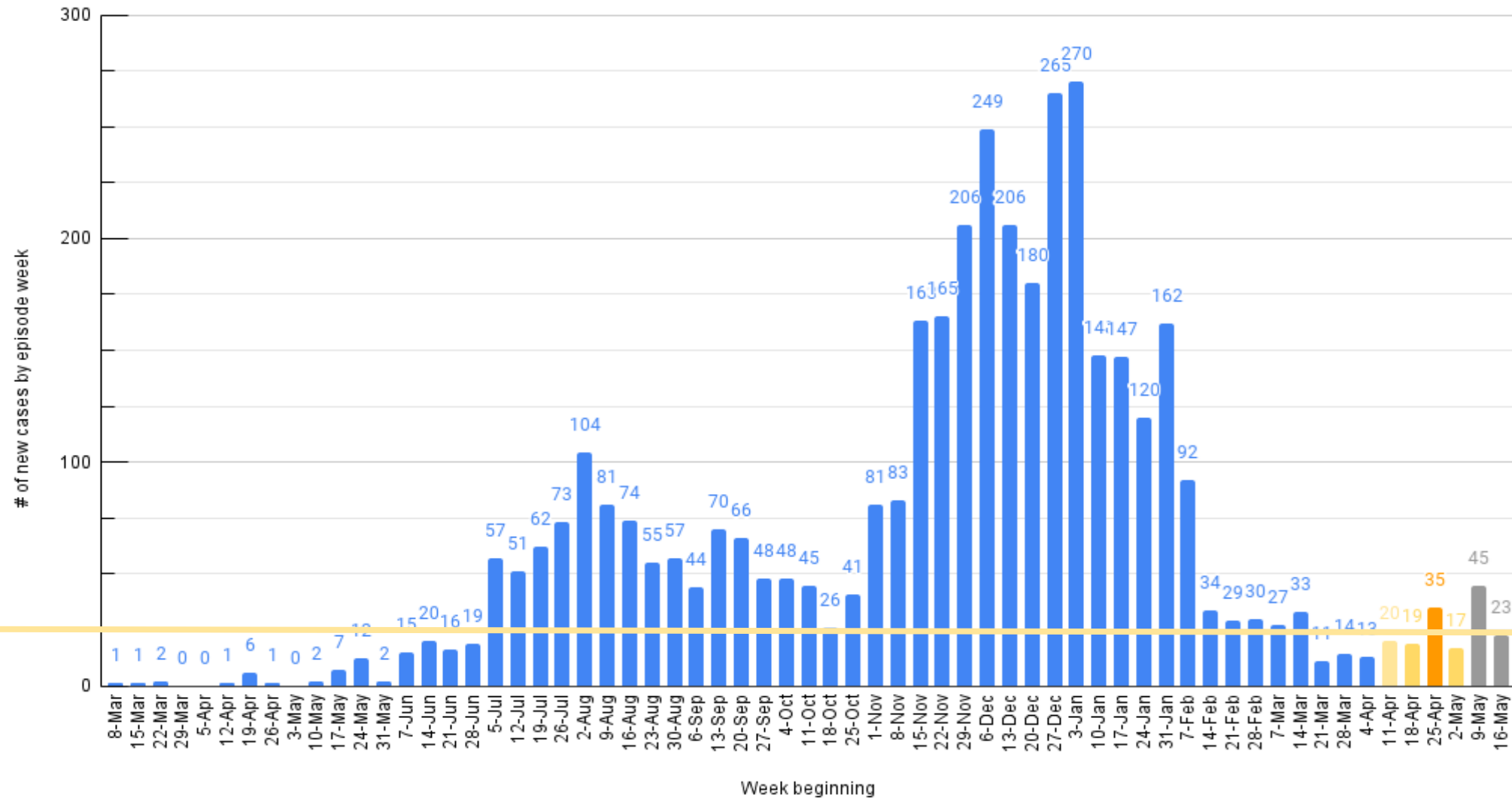
COUNTY RISK LEVELS

	Counties	Population	
Substantial	10	4,428,415	11.0%
Moderate	35	18,114,222	45.1%
Minimal	13	17,586,523	43.8%

Tests per 100,000 per day, excl prisoners (7 day avg w/ 7 day lag) for Multiple Locations

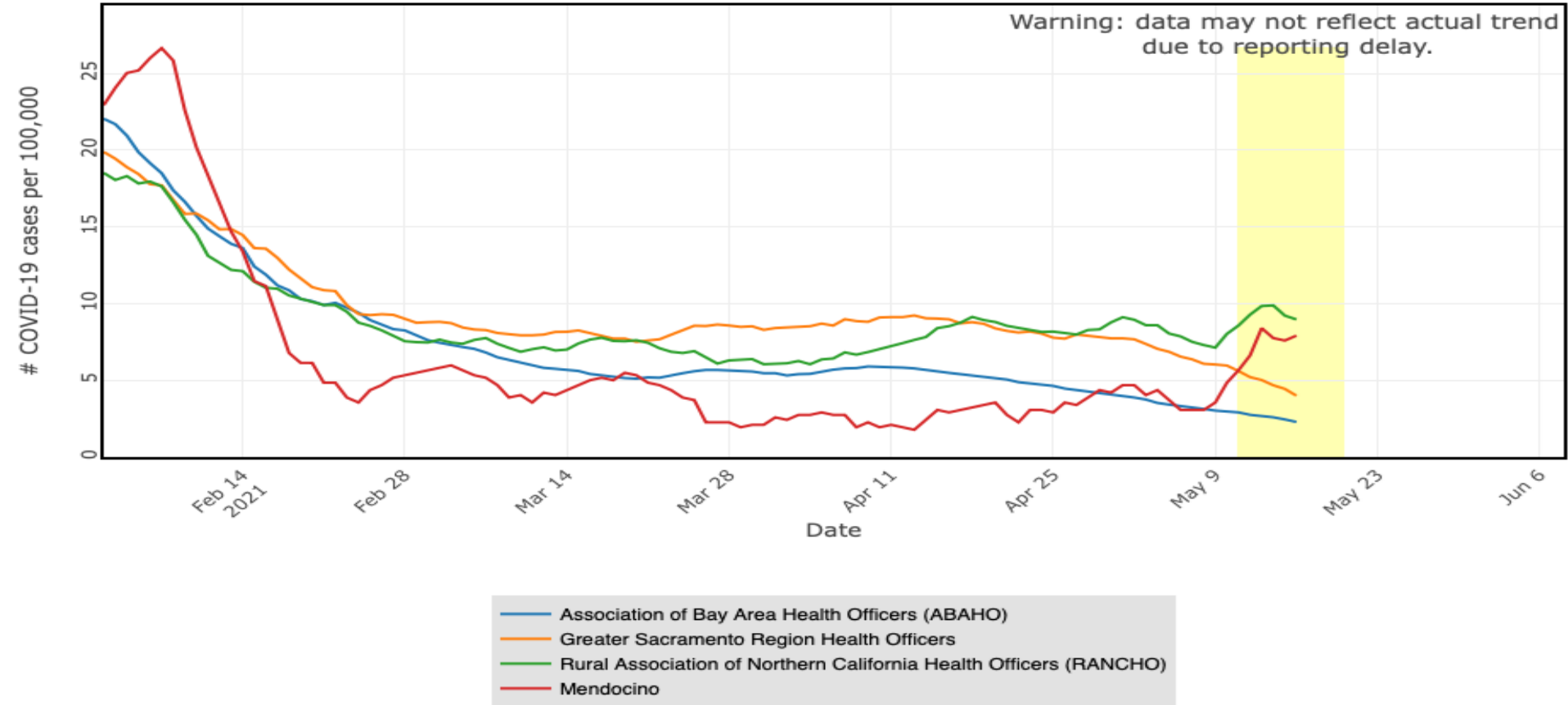


Mendocino County COVID-19 cases, by episode week, through May 19, 2021 (N=3,994) as of 5/20/21



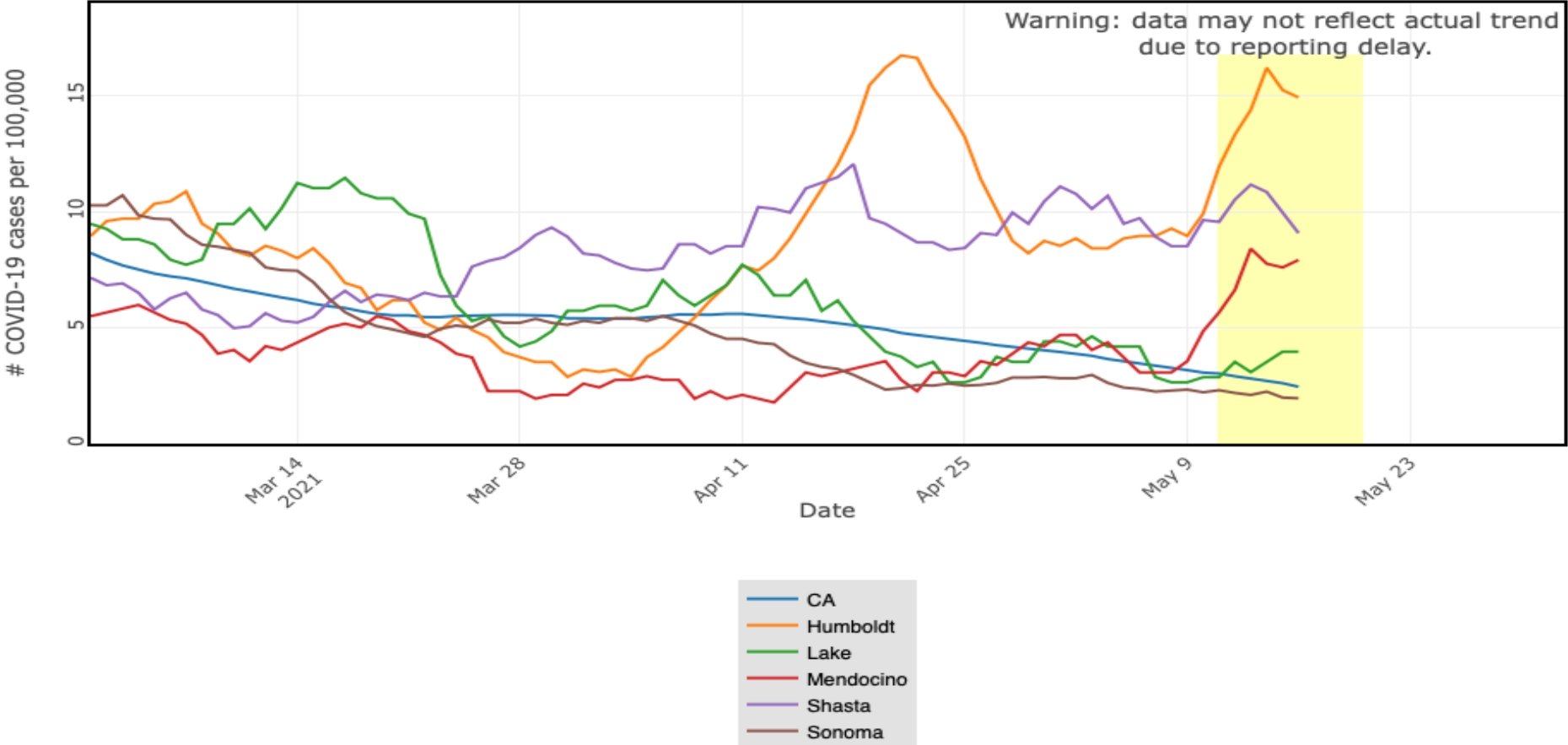
Regional and Mendocino County Daily Case Rates

Case rate per 100,000, excl prisoners (7 day avg) for Multiple Locations



Mendocino County and Nearby Counties' Daily Case Rates

Case rate per 100,000, excl prisoners (7 day avg) for Multiple Locations



Mendocino County and Nearby Counties' Test Positivity

**Test positivity, excl prisoners (7 day) for
Multiple Locations**

