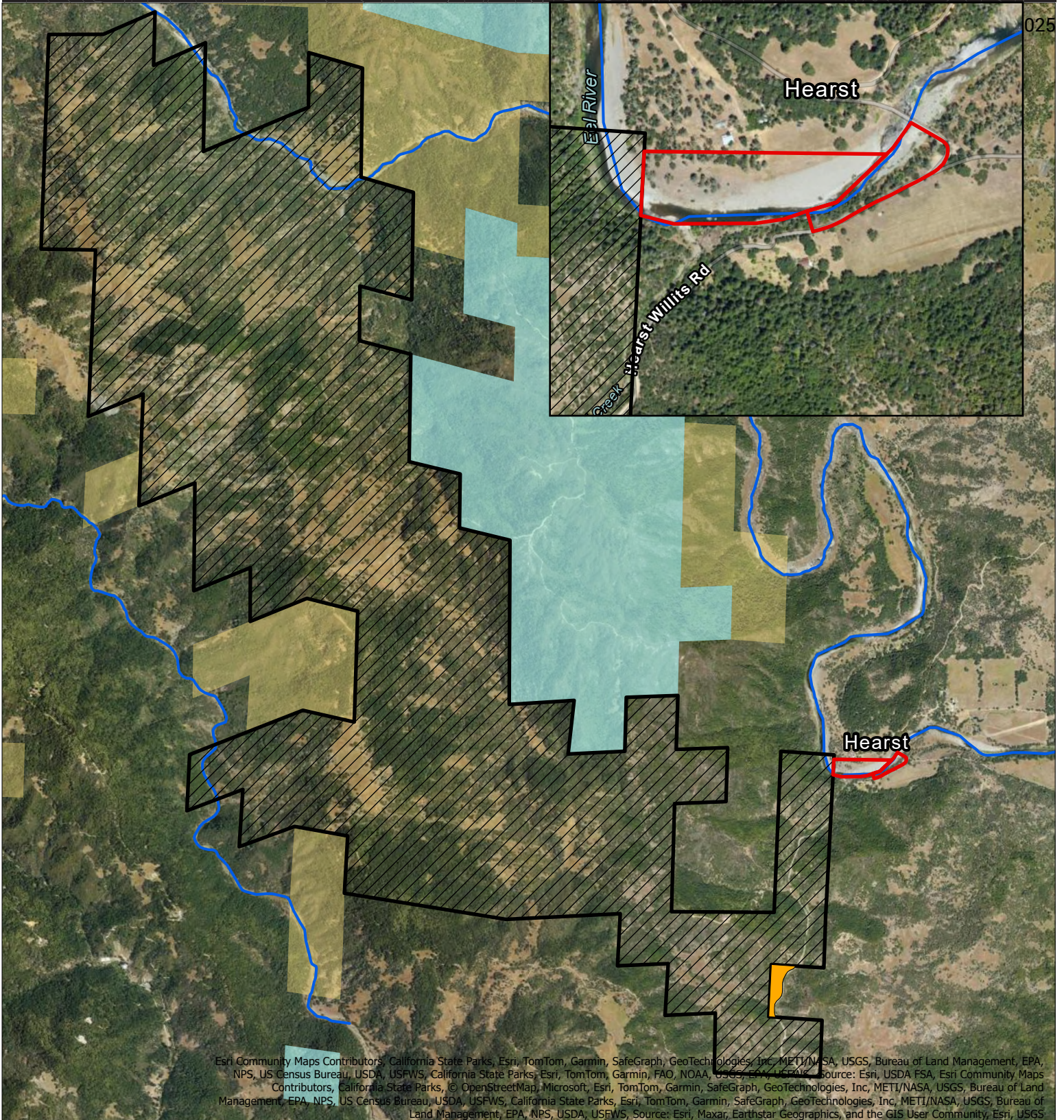




Eel Wild and Scenic River

LWCF FY27/FY28 Proposal

Bureau of Land Management
Arcata Field Office
1695 Heindon Rd
Arcata, CA 95521-4573
(707) 825-2300



Esri Community Maps Contributors, California State Parks, Esri, TomTom, Garmin, SafeGraph, GeoTechnologies, Inc, METI/NASA, USGS, Bureau of Land Management, EPA, NPS, US Census Bureau, USDA, USFWS, California State Parks, Esri, TomTom, Garmin, FAO, NOAA, USGS, Esri, USFWS. Source: Esri, USDA FSA, Esri Community Maps Contributors, California State Parks, © OpenStreetMap, Microsoft, Esri, TomTom, Garmin, SafeGraph, GeoTechnologies, Inc, METI/NASA, USGS, Bureau of Land Management, EPA, NPS, US Census Bureau, USDA, USFWS, California State Parks, Esri, TomTom, Garmin, SafeGraph, GeoTechnologies, Inc, METI/NASA, USGS, Bureau of Land Management, EPA, NPS, US Census Bureau, USDA, USFWS, Source: Esri, Maxar, Earthstar Geographics, and the GIS User Community, Esri, USGS

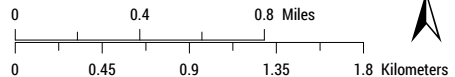
BLM Field Office

Land Status

- BLM
- State
- BLM CA Wild and Scenic River

Unique Parcel Name

- FY26 Acquisition- Folsom Ranch
- FY26 Acquisition- Salt Creek
- Hearst-Willits Bridge Parcel



No warranty is made by the Bureau of Land Management as to the accuracy, reliability, or completeness of this map or the data displayed for individual use or aggregate use with other data.