

February 3, 2025



TECHOPS SPECIALTY VEHICLES

QUOTE:

0225-1712

Freightliner M2

Bookmobile with 22' Body

Library Name:

Mendocino County Library

Library Address:

105 N. Main St.

Ukiah, CA 95482

Library Point of Contact:

Barb Chapman, Administrative Services Manager
chapmanb@mendocinocounty.gov

Company:

TechOps Specialty Vehicles, LLC

Company Address:

218A Log Canoe Circle,
Stevensville, MD 21666

Company Point of Contact:

Jennifer Samora, Sales Executive
jsamora@techopssv.com



Dear Barb Chapman,

TechOps Specialty Vehicles, LLC (TechOps), a leader in the specialty vehicle industry, is pleased to provide you with the following response to your request for quote for a new Freightliner M2 Bookmobile with 22' Body. While still maintaining a small business environment, TechOps has proudly established itself as a market leader within the Specialty Vehicle industry repeatedly earning the trust to design and manufacture for the highest levels of the U.S. Government, State & Local agencies, as well as numerous private enterprises. TechOps-built units are currently fielded and in service across the country and operating in the most robust and dynamic work environments.

In this quote document you will find an overview of your proposed vehicle which includes specified line items, pricing, and our terms and conditions. TechOps's submission has been prepared in a detailed manner to address all build information and consistent with the specifications discussed or noted in the provided documentation.

Any questions about the content of this quote or requests for adjustments in specifications can be directed to myself, Jennifer Samora, via email at jsamora@techopssv.com or by phone at (720) 862-5268. Once specifications are finalized and Purchase Order and deposit are in place, TechOps will assign your team a Project Manager and Design Engineer, and the detailed design phase of the project will commence. There will be an initial kick-off meeting with your team followed by Design Reviews with the TechOps Design & Engineering Team. All design or specification changes will be documented via change order and thoroughly communicating with your assigned point of contact. Mendocino County Library will have sign off on the final design and build plan.

Before production kicks off a detailed production schedule will be established allowing for key target dates along with a delivery date. At that point we would encourage your organization's personnel to visit our facility and see first-hand the upfitting process of your new vehicle.

TechOps has the ability and expertise to begin the custom design work on your new Freightliner M2 Bookmobile. The estimated timeline is Q2 2025 for the chassis, Q3 2025 for the Odyne hybrid driveline, Q4 2025 for the body and conversion to a bookmobile at TechOps in Q1 2026 and inspection/delivery to follow. Please let me know if you have any questions.

Sincerely,

A handwritten signature in black ink that reads 'Jennifer Samora'. The script is fluid and cursive, with the first letter 'J' being particularly large and stylized.

Jennifer Samora

Sales Executive

jsamora@techopssv.com

720-862-5268

TECHOPS OUTREACH UNIT PROJECTS

Queen Anne County Public Library, Maryland – Outreach Van



Janet Salazar
121 S. Commerce Street
Centreville, MD 21617
Janet@qaclibrary.org
410-303-0695

Worcester County Public Library, Maryland – Pop – Up



Jennifer Ranck
307 N Washington Street
Snow Hill, MD 21863
Jranck@worcesterlibrary.org
410-632-3495

St. Mary's Public Library, Maryland – M2 Bookmobile



Michael Blackwell
23630 Hayden Farm Lane
Leonardtown, MD 20650
Mblackwell@stmalib.com

Lee County Public Library – Pop-Up Bookmobile



Melissa Baker
2345 Union Street
Fort Myers, FL 33901
Mbaker@leegov.com
239-533-4800

Northumberland Public Library, Virginia – Sprinter Bookmobile Van



Jane Blue
7204 Northumberland Hwy
Heathsville, VA 22473
Jblue@nplibraryva.org
804-580-5051

National Wildlife Refuge – Stepvan Outreach Vehicle



Ann-Marie Wildman
1 Wildlife Drive
Sanibel, FL 33957
Wildman@dingdarlingsociety.org
239-789-8991

Middlesex Public Library, Virginia – Sprinter Bookmobile Van



Carrie Dos Santos
P.O. Box 189
Urbanna, VA 23175
Cdossantos0901@gmail.com
804-758-5717

Albermarle County, Virginia – Mobile Outreach Van Conversion



Mike Seabright
7010 Troy Hill Drive
Elkridge, MD 21075
Mseabright@fescosales.com

South Carolina Department of Veterans Affairs – Mobile Offices (3)



Kayla Middleton
1201 Main St. Suite 600
Columbia, SC 29201
Kmiddleton@mma.sc.gov
803-737-2609

Licking County Public Library, Ohio – M2 Bookmobile



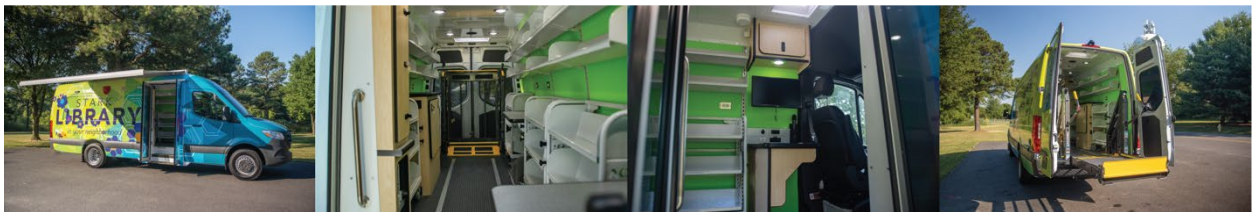
Sandra Lodge
101 West Main Street
Newark, OH 43055
Slodge@lickingcountylibrary.org
740-349-5500

Worthington Public Library, Ohio – Pop – Up Bookmobile



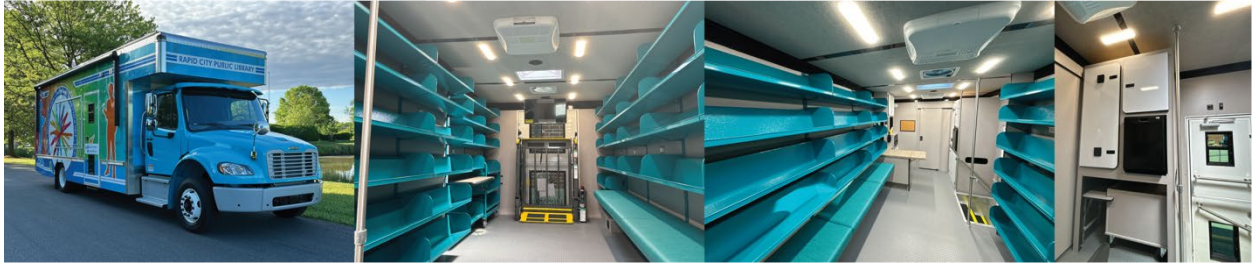
Gabrielle Rathge
820 High Street
Worthington, OH 43085
Grathge@worthingtonlibraries.org
614-807-2643

Stark District Library, Ohio – Sprinter Bookmobile Vans (2)



Marianna DiGiacomo
715 Market Avenue
N Canton, OH 44702
Mdigiacomo@starklibrary.org
330-452-0665

Rapid City Public Library, South Dakota – M2 Bookmobile



Terri Davis
610 Quincy Street
Rapid City, SD 57701
Tdavis@rcplib.org
605-394-6139 ext. 2215

West Des Moines Public Library, Iowa – Pop – Up Book Mobile



Jenna Ehler
4000 Mills Civic Parkway
West Des Moines, IA 50265
Jennaehler@wdm.iowa.gov
515-222-3415

Poplar Creek Public Library, Illinois – Transit Bookmobile Van



Kris Kenney
1405 Southpark Avenue
Streamwood, IL 60107
Kkenney@pclib.org
331-808-3503

Chelsea District Library, Michigan – Sprinter Bookmobile Van



Lori Coryell
221 S. Main Street
Chelsea, MI 48118
Lcoryell@chelseadistrictlibrary.org
734-475-8732 ext. 206

East Bonner Public library, Idaho – Transit Bookmobile Van



Vanessa Velez
1407 Cedar Street
Sandpoint, ID 83864
Vanessa@bonnerlibrary.org
208-263-6930 ext. 1282

Spokane County District library, Washington – M2 Bookmobile



Doug Stumbough
4322 North Argonne Road
Spokane, WA 99212
Dstumbough@scid.org
262-679-9096

Spokane County District library, Washington – Sprinter Bookmobile Van



Doug Stumbough
4322 North Argonne Road
Spokane, WA 99212
Dstumbough@scid.org
262-679-9096

Butte County Public Library, California – M2 Bookmobile



Chelsea James
2081 2nd Street
Oroville, CA 95965
Cjames@buttecounty.net
530-552-5650

San Luis Obispo Public Library, California – CFE Transit Bookmobile Vans (3)



Missy Viles
995 Palm Street
San Luis Obispo, CA 93401
MViles@co.slo.ca.us

San Andreas Public Library, California – Freightliner Bookmobile Van



Albert Alt
891 Mountain Ranch Road
San Andreas, CA 95249

Shafter Public Library, California – Sprinter Bookmobile Van



David Franx
336 Pacific Avenue
Shafter, CA 93263
Dfranz@shafterlearning.com
661-746-5042

Molalla Public Library, Oregon – Transit Bookmobile Van



Diana Hadley
PO Box 1289
Molalla, OR 97038
Dhadley@lincc.org
503-759-0250

Jackson Public Library, Oregon – Sprinter Bookmobile Van



Carrie Turney Ross
205 South Central Avenue
Medford, OR 97501
Cturneyross@jcls.org
541-774-8679

Carroll County BM Retrofit



Kristen Bodvin
50 E. Main Street
Westminster, MD 21157
kbodvin@carr.org
410-386-4450 x7736

Missoula BM Sprinter



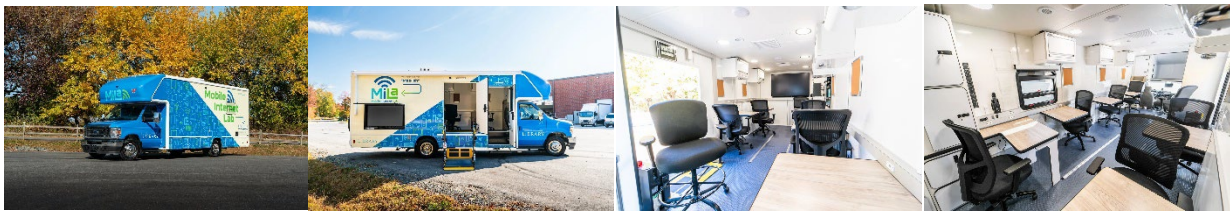
Slaven Lee
455 E. Main Street
Missoula, MT 59802
slavenl@missoulapubliclibrary.org
406-541-8864

Marion Bookmobile



Bill Carroll
1101 6th Avenue
Marion, IA 52302
bcarroll@marionpubliclibrary.org
319-743-1984

Mecklenburg Bookmobile



Emery Otiz
310 North Tryon Street
Charlotte, NC 28202
eotiz@cmlibrary.org
704-416-0501

Brown County M2



Jenn Koetz
515 Pine Street
Green Bay, WI 54301
Jenn.koetz@browncountywi.gov
920-448-5814



Line-Item Specifications

1.0 CHASSIS (CHAS)		
1	ETO-CHASSIS	2026 FREIGHTLINER M2 106 PLUS BUILT TO INCLUDED SPECIFICATIONS, SOLID COLOR TBD POST AWARD
2.0 BODY (BODY)		
1	ETO-BODY	22' ALUMINUM DRY-FREIGHT BODY BUILT TO SPECIFICATIONS
3.0 INTERIOR GENERAL (IGEN)		
3.1 INTERIOR GENERAL BOX AND TRIM (IGEN-BOX, IGEN-BOX-TRM)		
22	IGEN-BOX-CEIL-1FT-CARP	INTERIOR GENERAL, BOX - CEILING PANELS, PER FOOT, 1/2" PLYWOOD PANELS, MARINE GRADE GREY CARPET FINISH
22	ETO-CARPET UPGRADE	INTERIOR GENERAL, BOX - UPGRADE CARPET TO CUSTOM COLOR SELECTED BY CUSTOMER
22	IGEN-BOX-FLR-1FT-.5IN-COIN	INTERIOR GENERAL, FLOOR, BOX - PER FOOT, 1/2" PLYWOOD, LONCOIN FINISH
74	IGEN-BOX-INS-1FT-1.0-FOIL	INTERIOR GENERAL, INSULATION, BOX - WALLS OR CEILING, PER FOOT, INSULATION, 1" FOAM BOARD, FOIL-FACED
32	IGEN-BOX-TRM-1FT-DP	INTERIOR GENERAL, TRIM, BOX - PER FOOT TRIM, DIAMOND PLATE ALUMINUM
60	IGEN-BOX-TRM-1FT-0.40-L	INTERIOR GENERAL, TRIM, BOX - PER FOOT TRIM, 0.40" ALUMINUM, L-SHAPED
28	IGEN-BOX-TRM-1FT-0.40-FLAT	INTERIOR GENERAL, TRIM, BOX - PER FOOT TRIM, 0.40" ALUMINUM, FLAT
16	IGEN-BOX-FURR	INTERIOR GENERAL, WALL FURRING - PER BEAM, PLYWOOD STRIPS
3.3 INTERIOR GENERAL BOOKMOBILE (IGEN-MOV)		
1	IGEN-MOV-BOX-ACORE-BASE-22	INTERIOR GENERAL, WALLS AND CEILING, OUTREACH VEHICLE, BOX - BASE ACORE PACKAGE FOR 22FT BODY (ASSUMES 2 SIDE ENTRANCE DOORS)
8	IGEN-MOV-BOX-ACORE-WAL-36-LAM-01	INTERIOR GENERAL, WALL PANEL, OUTREACH VEHICLE, BOX - FABRICATED, 1/2" PLYWOOD WALL PANEL FOR 36" ACORE UPRIGHT SPACING, LAMINATE FINISH
2	IGEN-MOV-BOX-ACORE-WAL-36-LAM-02	INTERIOR GENERAL, WALL PANEL, OUTREACH VEHICLE, BOX - FABRICATED, 1/2" PLYWOOD WALL PANEL FOR 36" ACORE UPRIGHT SPACING, LAMINATE FINISH, USE IN LOCATION WITH WINDOW, INCLUDES FABRICATED WINDOW TRIM
2	IGEN-MOV-BOX-ACORE-WAL-DR32-LAM	INTERIOR GENERAL, WALL PANEL, OUTREACH VEHICLE, BOX - FABRICATED, 1/2" PLYWOOD WALL PANEL KIT FOR 32" DOOR OPENING INBETWEEN ACORE UPRIGHTS, LAMINATE FINISH, INCLUDES FABRICATED DOOR TRIM
1	IGEN-MOV-BOX-ACORE-WAL-REAR-LAM-02	INTERIOR GENERAL, WALLS AND CEILING, OUTREACH VEHICLE, BOX - FABRICATED, 1/2" PLYWOOD PANELS FOR REAR WALL W/DOOR, INCLUDES FABRICATED DOOR TRIM, LAMINATE FINISH
4	IGEN-MOV-BOX-ACORE-WAL-MISC-LAM	INTERIOR GENERAL, WALL PANEL, OUTREACH VEHICLE, BOX - FABRICATED, 1/2" PLYWOOD WALL PANEL FOR MISCELLANEOUS SECTIONS LESS THAN 24" WIDE, LAMINATE FINISH
		*SECTION NOTES - N/A
4.0 INTERIOR CABINETRY (ICAB)		
4.1 INTERIOR CABINETRY PARTITIONS (ICAB-PAR)		
2	ICAB-PAR-HLF-BOX-03	INTERIOR CABINET, PARTITION - FABRICATED, FULL HEIGHT DIVIDER PARTITION AT STEPWELL, BOX CHASSIS



1	ICAB-PAR-CAB-WALK-M2-LAM	INTERIOR PARTITION, OUTREACH VEHICLE, BOX - FABRICATED, FRONT PARTITION, FULL HEIGHT WALK THROUGH, BOAT SEAL, OVERHEAD STORAGE CABINET (STREET SIDE, NO DOOR, ACCESS FROM CAB), OVERHEAD ELECTRICAL CABINET (CURB SIDE, WITH DOOR, ACCESS FROM CAB), 1/2" PLYWOOD WALL PANELS W/CUSTOM LAMINATE FINISH, SLIDING DOOR W/CUSTOM LAMINATE FINISH
4	ICAB-PAR-LAM-UPG	INTERIOR CABINET, PARTITION - UPGRADE TO CUSTOM COLOR LAMINATE. PER SHEET
4.2 INTERIOR CABINETRY UPPER CABINETS (ICAB-UPP)		
2	ICAB-UPP-ACORE-36-FIXED	INTERIOR CABINET - FABRICATED, UPPER CABINET, ~36 WIDE, PERMANENTLY AFFIXED TO WALL PANEL IN BETWEEN ACORE UPRIGHTS, OR WHERE THERE IS NO UPRIGHT TO MATE WITH, LAMINATE FINISH
2	ICAB-UPP-LAM-UPG	INTERIOR CABINET, UPPER CABINET - UPGRADE TO CUSTOM COLOR LAMINATE. PER SHEET. (CHOOSE SIDES AND DOORS)
4.3 INTERIOR CABINETRY WORKSTATIONS (ICAB-WST)		
2	ICAB-WST-1-MOV-03	INTERIOR CABINET, WORKSTATION, MOBILE OUTREACH VEHICLE - FABRICATED, L-SHAPED WORKSTATION W/SUPPORT, T-MOLDING EDGE, LAMINATE FINISH
2	ICAB-COU-SM-FLIP-01	INTERIOR CABINET - FABRICATED, FLIP UP COUNTER, ADDED ON TO L-SHAPED WORKSTATION, INCLUDES BRACKETS AND BRACKET SUPPORT PANEL, LAMINATE FINISH TO MATCH L-SHAPED WORKSTATION
4	ICAB-WST-LAM-UPG	INTERIOR CABINET, WORKSTATION - UPGRADE TO CUSTOM COLOR LAMINATE. PER SHEET. (CHOOSE SIDES AND DOORS)
4.4 INTERIOR CABINETRY LOWER CABINETS (ICAB-LOW)		
2	ICAB-LOW-FILE-3DR	INTERIOR CABINET - LOWER FILING CABINET, 3 DRAWER, ~15" WIDE, FINISH SELECTED BY CUSTOMER POST AWARD
2	ICAB-LOW-LAM-UPG	INTERIOR CABINET, LOWER CABINET - UPGRADE TO CUSTOM COLOR LAMINATE. PER SHEET. (CHOOSE SIDES AND DOORS)
4.6 INTERIOR CABINETRY FULL HEIGHT CABINETS (ICAB-FUL)		
1	ICAB-FUL-L	INTERIOR CABINET - FABRICATED, FULL HEIGHT STORAGE CABINET, FINISHED SURFACE, LARGE
		<i>NOTE - LOCATED FRONT CORNER ON CURBSIDE, INCLUDES 4 DOORS AND 3 ADJUSTABLE SHELVES. (UPPER AND LOWER SECTIONS DIVIDED BY COUNTER TOP)</i>
2	ICAB-FUL-LAM-UPG	INTERIOR CABINET, FULL HEIGHT - UPGRADE TO CUSTOM COLOR LAMINATE. PER SHEET. (CHOOSE SIDES AND DOORS)
4.8 INTERIOR CABINETRY ELECTRICAL CABINETS (ICAB-ELE)		
1	ICAB-ELE-FUL-CT	INTERIOR CABINET - FABRICATED, ELECTRICAL CABINET, FULL HEIGHT, FOR CONTROLS AND WIRE CHASE ONLY, ~12" WIDE, FRONT S/S LOCATION, BOX TRUCK, LAMINATE FINISH
1	ICAB-ELE-LAM-UPG	INTERIOR CABINET, ELECTRICAL - UPGRADE TO CUSTOM COLOR LAMINATE. PER SHEET. (CHOOSE SIDES AND DOORS)
4.10 INTERIOR CABINETRY UTILITY (ICAB-UTY)		
1	ICAB-UTY-SM-ESPAR	INTERIOR CABINET - FABRICATED, HVAC EQUIPMENT ENCLOSURE, SMALL SIZE, DESIGNED FOR ESPAR FUEL FIRED HEATER
0.5	ICAB-UTY-LAM-UPG	INTERIOR CABINET, HVAC ENCLOSURE - UPGRADE TO CUSTOM COLOR LAMINATE. PER SHEET.
5.0 INTERIOR ACCESSORY (IACC)		
5.1 INTERIOR ACCESSORY (IACC)		
2	IACC-SCRW-M-3FT	INTERIOR ACCESSORY - SINGLE CHANNEL RACEWAY W/COVER, 3FT



2	IACC-UNI-ACC-WST-01	INTERIOR CABINET ACCESSORY, UNIVERSAL - PENCIL DRAWER FOR WORKSTATION
2	IACC-UNI-ACC-BROCHURE-3	INTERIOR CABINET ACCESSORY, UNIVERSAL - THREE TIER BROCHURE RACK W/CLEAR LEXAN FACE AND REMOVABLE DIVIDERS
16	IACC-UNI-ACC-02	INTERIOR CABINET, UNIVERSAL - SWAP STANDARD COMPRESSION LATCH FOR LOCKING COMPRESSION LATCH
1	ETO-MICROWAVE	ENGINEER TO ORDER, INTERIOR ACCESSORY, UNIVERSAL - STANDALONE MICROWAVE, SECURED IN OVERCAB STORAGE CABINET
1	IACC-LIFT-NL2-UNI	INTERIOR ACCESSORY, UNIVERSAL, LIFT - BRAUN ABILITY INTERNAL ADA WHEELCHAIR LIFT, 800LB CAPACITY, MILLENNIUM SERIES NL2, NO VEHICLE SPECIFIC MOUNTING PLATE
2	IACC-UNI-ACC-CUP	INTERIOR CABINET ACCESSORY, UNIVERSAL - COUNTERTOP CUP HOLDER
5.2 INTERIOR ACCESSORY BOOKMOBILE (IACC-MOV)		
1	IACC-MOV-ACORE-INSTALL-TIER3	INTERIOR ACCESSORY, OUTREACH VEHICLE - ACORE ACCESSORIES INSTALL, TIER 3
6	IACC-MOV-ACORE-7/18-ABR	INTERIOR ACCESSORY, OUTREACH VEHICLE - ACORE ABR 7" BY 18" AGGRESSIVELY CLEATED SHELF
21	IACC-MOV-ACORE-7/36-ABR	INTERIOR ACCESSORY, OUTREACH VEHICLE - ACORE ABR 7" BY 36" AGGRESSIVELY CLEATED SHELF
9	IACC-MOV-ACORE-9/36-ABR	INTERIOR ACCESSORY, OUTREACH VEHICLE - ACORE ABR 9" BY 36" AGGRESSIVELY CLEATED SHELF
2	IACC-MOV-ACORE-11/36-ABR	INTERIOR ACCESSORY, OUTREACH VEHICLE - ACORE ABR 11" BY 36" AGGRESSIVELY CLEATED SHELF
2	IACC-MOV-ACORE-K-11	INTERIOR ACCESSORY, OUTREACH VEHICLE - ACORE, K-BIN 11"
3	IACC-MOV-ACORE-SS3	INTERIOR ACCESSORY, OUTREACH VEHICLE - ACORE, SINGLE SIDED WALL HUGGER, THREE SHELVES
1	IACC-MOV-ACORE-SS3-F	INTERIOR ACCESSORY, OUTREACH VEHICLE - ACORE, SINGLE SIDED WALL HUGGER, THREE SHELVES, FLAT TOP
4	IACC-MOV-ACORE-SD	INTERIOR ACCESSORY, OUTREACH VEHICLE - ACORE, WALL SECURITY DEVICE
1	IACC-MOV-ACORE-CS	INTERIOR ACCESSORY, OUTREACH VEHICLE - ACORE, COLOR STRIPS, 5 PRE-SELECTED COLORS
1	IACC-MOV-ACORE-PEN-WHITE	INTERIOR ACCESSORY, OUTREACH VEHICLE - ACORE, TOUCHUP PEN, WHITE
1	IACC-MOV-ACORE-PEN-CUS	INTERIOR ACCESSORY, OUTREACH VEHICLE - ACORE, TOUCHUP PEN, CUSTOM COLOR
1	IACC-MOV-ACORE-CUS	INTERIOR ACCESSORY, OUTREACH VEHICLE - ACORE, CUSTOM
2	IACC-MOV-RAIL-01	INTERIOR ACCESSORY, OUTREACH VEHICLE - SIDE ENTRANCE RAILING KIT INCLUDING HAND RAIL AND VERTICAL STANCHION
2	IACC-MOV-PULL-01	INTERIOR ACCESSORY, OUTREACH VEHICLE - SIDE ENTRANCE DOOR INTERIOR PULL HANDLE
1	IACC-MOV-OPEN-01	INTERIOR ACCESSORY, OUTREACH VEHICLE - OPEN SIGN
1	IACC-MOV-CLOCK-01	INTERIOR ACCESSORY, OUTREACH VEHICLE - ATOMIC CLOCK, BATTERY-POWERED
6.0 INTERIOR LIGHTING (ILIT)		
1	ILIT-CTRL-TOG-02	INTERIOR LIGHTING - TOGGLE CONTROLS MOUNTED ON WALL/ CABINET SIDE



		<u>NOTE - STANDARD TOGGLE SWITCH FOR SCENE LIGHTING LOCATED ON DASH</u>
16	ILIT-LED-SFCMT-W-14	INTERIOR LIGHTING - SURFACE MOUNTED 14" LONG LED LIGHT. RECTANGULAR SHAPED
1	ILIT-UNI-CTRL-ZIGZAG	INTERIOR LIGHTING - ADD ZIGZAG LIGHT PATTERN
		<u>*SECTION NOTES - DIMMING AND LIGHT SWITCHING ON TOUCHSCREEN</u>
7.0 CHASSIS/BODY MODIFICATIONS (MODS)		
7	MODS-REIN-ROOF	BODY MODIFICATION - ROOF REINFORCEMENT FOR ROOF-MOUNTED AC, FAN, OR SKYLIGHT
132	MODS-PLATE-1FT-ST-02	BODY MODIFICATION - PER FOOT, MOUNTING PLATE, STEEL BOX TUBE, 1.5"X 2.0", FINISHED
1	MODS-BOX-SKIRT-22	BODY MODIFICATION, BOX - BODY SKIRTING PACKAGE FOR 22FT BODY, POWDERCOAT FINISH
4	MODS-ACC-SKIRT-01	BODY MODIFICATION, ACCESSORY - KIT FOR SKIRTING AROUND EXTERIOR COMPARTMENT OR DOOR (APPLIED AFTER BODY SKIRTING PACKAGE IS SELECTED)
2	MODS-BOX-WIN-M-26X26-01	BODY MODIFICATION, BOX - WINDOW FOR BODY, 26"X 26" , SLIDING GLASS, HALF SLIDER, LEFT VIEW (STREET SIDE), SQUARE CORNERS
2	MODS-DOOR-AL-32-WIN-BOX	BODY MODIFICATION, BOX - ALUMINUM ENTRANCE DOOR, WITH WINDOWS, PANIC BAR AND DEAD BOLT, 32", WHITE, AUTO DOOR CLOSER, INCLUDES HOLD OPENS
1	MODS-DOOR-AL-47-WIN-BOX	BODY MODIFICATION, BOX - ALUMINUM ENTRANCE DOOR, WITH WINDOWS, PANIC BAR AND DEAD BOLT, 47", WHITE, INCLUDES HOLD OPENS
2	MODS-SW-01	BODY MODIFICATION, BOX - SIDE ENTRANCE STEPWELL, ALUMINUM, W/TREAD
1	MODS-TOUCH-01-BOX	BODY MODIFICATION, BOX - UNDERBODY, MISCELLANEOUS UNDERCOATING TOUCH UP
44	MODS-BOX-DRPRL-1FT-01	BODY MODIFICATION, BOX - DRIPRAIL, PER FOOT, PLACED OVER DOORS AND WINDOWS TO REDIRECT WATER, ALUMINUM, POWDERCOATED TO MATCH BODY
8.0 EXTERIOR COMPARTMENTS (XCPT)		
1	XCPT-GEN-8KW-01	EXTERIOR COMPARTMENT, BOX - INSULATED ALUMINUM GENERATOR BOX, FLIP UP DOOR ACCESS, COMPRESSION LATCHES, FOR 8KW DIESEL GENERATOR (REQUIRES SEPARATE INSTALLATION KIT FOR VEHICLE/BODY TYPE)
1	XCPT-ACC-GENKIT-78KW-BF	EXTERIOR COMPARTMENT ACCESSORY - 7 TO 8KW GENERATOR INSTALLATION KIT, BELOW FLOOR, INCLUDES BATTERY TRAY
1	XCPT-BATT-4	EXTERIOR COMPARTMENT, BOX - UNDERBODY ALUMINUM BATTERY BOX, FLIP UP DOOR ACCESS, SLIDEOUT TRAY FOR 4 AGM OR 2 LITHIUM BATTERIES, COMPRESSION LATCHES
1	XCPT-BOX-SHORE-01	EXTERIOR COMPARTMENT, BOX - UNDERBODY ALUMINUM SHORE POWER BOX, FLIP UP DOOR ACCESS, COMPRESSION LATCHES
1	XCPT-STO-OTS-18X18X24	EXTERIOR COMPARTMENT, BOX - UNDERBODY STEEL STORAGE BOX, FLIP UP DOOR ACCESS, LOCKING T-LATCH, 18 X 18 X 24, INCLUDES ADDING SUPPORT FRAMING
		<u>*SECTION NOTES - IF CHOOSING ODYNE COMPARTMENTS WILL CHANGE</u>
9.0 EXTERIOR ACCESSORY (XACC)		
2	XACC-STP-MAN-BOX	EXTERIOR ACCESSORY, BOX - STEP, SLIDE OUT, MANUAL, ONE STEP, MOUNTED UNDER STEP WELL
3	XACC-DOOR-HOLD-01-BOX	EXTERIOR ACCESSORY, BOX - CAST ALUMINUM DOOR HOLD OPEN DEVICE



3	XACC-SKY-14X22-BOX	EXTERIOR ACCESSORY, BOX - SKYLIGHT, 14X22"
10.0 EXTERIOR LIGHTING (XLIT)		
4	XLIT-M6-EZ-C	EXTERIOR LIGHTING, SCENE - WHELEN M6 EZ SCENE LED LIGHT, WHITE, CHROME FLANGE
1	XLIT-ACC-REV	EXTERIOR LIGHTING, ACCESSORY - REVERSE INTERFACE WITH REAR SCENE LIGHTS
		*SECTION NOTES - TWO CURBSIDE AND TWO REAR
11.0 POWER SYSTEM (POWR)		
1	POWR-PREWIRE-T3-BOX	PRE-WIRE LABOR AND HARDWARE FOR BOX, TIER 3
1	POWR-E3-12V-LIP2-TS	POWER SYSTEM - AC/DC 3000W ELECTRICAL PACKAGE (E3) W/ 2 LITHIUM BATTERIES, INCLUDES TOUCH SCREEN CONTROLS
1	POWR-GEN-D-8KW-UNI	POWER SYSTEM, UNIVERSAL - DIESEL GENERATOR, 8K, 120VAC, 66.6A
1	POWR-SHRLN-04	POWER SYSTEM - 50 AMP SHORELINE INLET CONNECTOR, STANDARD
1	POWR-SRCD-50	POWER SYSTEM - 50 AMP SHORECORD, SHIPPED LOOSE
1	POWR-SRCD-PGTL-30TL	POWER SYSTEM - SHORECORD PIGTAIL ADAPTER, 50 AMP TWIST LOCK CONNECTOR, SHIPPED LOOSE
12.0 END POINTS (EDPT)		
4	EDPT-AC-WH-15-RW-02	END POINT, AC OUTLET - 120V OUTLET IN RACEWAY, 15A, W/USB, WHITE
		NOTE - STAFF DESK OUTLETS
11	EDPT-AC-WH-15-WALL-01	END POINT, AC OUTLET - 120V OUTLET IN WALL, 15A, WHITE
		NOTE - EVENLY DISTRIBUTED ON WALLS
2	EDPT-AC-WH-15-EXT-01	END POINT, AC OUTLET - 120V OUTLET ON EXTERIOR, 15A, GFCI, WHITE
1	EDPT-AC-WH-20-MB-02	END POINT, AC OUTLET - 120V OUTLET IN MULBERRY BOX, 20A
		NOTE - IN OVERCAB STORAGE CABINET FOR MICROWAVE
2	EDPT-AC-WH-15-MB-01	END POINT, AC OUTLET - 120V OUTLET IN MULBERRY BOX, 15A, WHITE
		NOTE - IN FLOOR TO CEILING CABINET FOR CHARGING STOWED DEVICES ETC..
1	EDPT-AC-WH-5-15R	END POINT, AC OUTLET - 120V NEMA 5-15R CORD END, 15A, WHITE
1	EDPT-HDMI-RW-01	END POINT, AUDIO VISUAL - HDMI IN RACEWAY
		NOTE - LOCATED AT FRONT STAFF DESK, WILL CONNECT TO FLIPDOWN MONITOR AT REAR
13.0 CLIMATE CONTROL (CLIM)		
1	CLIM-RTU-AC-BOX-13500-01	CLIMATE CONTROL, BOX, AIR CONDITIONER - 13,500 BTU ROOFTOP UNIT, DIRECT DUCT, MULTI-ZONE CAPABLE, WITH THERMOSTAT CONTROL
1	CLIM-RTU-AC-BOX-13500-02	CLIMATE CONTROL, BOX, AIR CONDITIONER - 13,500 BTU ROOFTOP UNIT, DIRECT DUCT, MULTI-ZONE, WITHOUT THERMOSTAT CONTROL, (MUST PAIR WITH UNIT THAT HAS THERMOSTAT)
2	CLIM-FAN-BOX	CLIMATE CONTROL, BOX, CEILING FAN - ROOF MOUNTED VENT AND FAN, REVERSIBLE, WITH RAIN SENSOR
1	CLIM-HEAT-FUEL-BOX-ESPAR-D4	CLIMATE CONTROL, BOX, HEATER - DIESEL-FIRED HEATER, ESPAR D4 (CABINET SEPARATE, IF REQUIRED)



15.0 AUDIO VISUAL (AVIS)		
1	AVIS-DISP-M-LED32	AUDIO VISUAL, UNIVERSAL - DISPLAY WITH MOUNTING BRACKET, LED 1080, 32"
1	AVIS-BOX-ACC-DISPKIT-01	AUDIO VISUAL, BOX, ACCESSORY - FLIPDOWN DISPLAY MOUNTING KIT, CEILING BASE MOUNT
1	AVIS-UNI-ACC-HDMI-40FT	AUDIO VISUAL, UNIVERSAL, ACCESSORY - HDMI CABLE, 40FT
		*SECTION NOTES - MONITOR WILL BE DROP DOWN OVER LIFT BASED ON INTERIOR SPACE
17.0 SAFETY (SFTY)		
1	SFTY-FE-5LB	SAFETY - FIRE EXTINGUISHER, 5 LB
1	SFTY-CO	SAFETY - COMBINATION CO AND SMOKE DETECTOR
1	SFTY-TRI	SAFETY - TRIANGLE KIT
1	SFTY-AID	SAFETY - FIRST AID KIT
1	SFTY-MDFLP	SAFETY - TECHOPS BRANDED MUDFLAPS
1	SFTY-CAM-RVC	SAFETY - REAR VIEW CAMERA SYSTEM
18.0 OTHER/DELIVERY (OTHR)		
1	OTHR-DEL-PREV	OTHER - DELIVERY, PREVAILING RATE AT TIME OF DELIVERY
1	OTHR-CLEAN-TRUCK-L	OTHER - CLEANING, TRUCK CHASSIS, LARGE
1	OTHR-LABELS-TRUCK-L	OTHER - LABELS, TRUCK CHASSIS, LARGE
1	OTHR-PREP-CHAS	PREPARE CHASSIS FOR UPFIT BY REMOVING FACTORY PANELS AND PARTS, CLEANING, AND PLACING CHASSIS BATTERIES ON TENDER.
1	OTHR-REASMBLY-CHAS	REPLACE FACTORY PARTS AND CHECK ALL NEW AND FACTORY CONNECTIONS, SCREWS, BOLTS, TIEDOWNS ETC..
1	OTHR-QC-IPCTN	QUALITY CONTROL INSPECTION AND REMEDIATION
2	RADCO	RADCO INSPECTION
19.0 DESIGN (DESN)		
1	DESN-AB-MECH-M2	DESIGN - AS-BUILT MECHANICAL DESIGN DRAWINGS, M2 BOOKMOBILE
1	DESN-AB-ELEC-M2	DESIGN - AS-BUILT ELECTRICAL DESIGN DRAWINGS, M2 BOOKMOBILE
20.0 TRAVEL (TRVL)		
1	TRVL-FLIGHT-1K	TRAVEL, AIR - ROUND TRIP FLIGHT, \$1,000
2	TRVL-HOTEL-300	TRAVEL, HOTEL - OVERNIGHT HOTEL STAY, NIGHTLY, \$300
3	TRVL-CAR-100	TRAVEL, CAR - CAR RENTAL, DAILY, \$100
3	TRVL-MEAL-100	TRAVEL, MEALS - MEALS AND INCIDENTALS, DAILY, \$100
21.0 TRAINING (TRNG)		
1	TRNG-ACCEPT-LVL3-TRUCK	TRAINING - VEHICLE OPERATIONS AND FAMILIARIZATION, AT ACCEPTANCE, TRUCK, LEVEL 3
OPTION 1: PA/RADIO SPEAKERS (INTERIOR AND EXTERIOR)		
15.0 AUDIO VISUAL (AVIS)		
1	AVIS-UNI-RAD-PA-2	AUDIO VISUAL, UNIVERSAL - AM/FM RADIO AND PA SYSTEM, WIRELESS MICROPHONE, 2 SPEAKERS
1	AVIS-UNI-SPKR-EXT-01	AUDIO VISUAL, UNIVERSAL - ADDITIONAL SPEAKERS, EXTERIOR, PAIR
1	AVIS-UNI-SPKR-INT-01	AUDIO VISUAL, UNIVERSAL - ADDITIONAL SPEAKERS, INTERIOR, PAIR
OPTION 2: MODULAR WORKSTATION		
4.3 INTERIOR CABINETRY WORKSTATIONS (ICAB-WST)		



1	ICAB-COU-SM-ACORE-36-FIXED	INTERIOR CABINET, WORKSTATION - FABRICATED, MODULAR WORK STATION, LAMINATE WITH T-MOLD EDGING, MATES WITH ACORE UPRIGHTS, FIXED ACORE BRACKETS
OPTION 3: MODULAR BENCH SEAT		
4.5 INTERIOR CABINETRY BENCHES (ICAB-BEN)		
1	ICAB-BEN-ACORE-36-FIXED	INTERIOR CABINET - FABRICATED BENCH, 36" MODULAR BENCH, 2" FOAM BASE ON 3/4" PLYWOOD, FIXED ACORE BRACKETS, MATES WITH UPRIGHTS
OPTION 4: L-TRACK		
5.1 INTERIOR ACCESSORY (IACC)		
24	IACC-LTK-1FT-01	INTERIOR ACCESSORY, UNIVERSAL - PER FOOT, RECESSED L-TRACK INSTALLED IN 1/2" DEPTH CHANNEL ON FLOOR, W/END CAPS
1	IACC-LTK-KIT-01	INTERIOR ACCESSORY, UNIVERSAL - L-TRACK ACCESSORY KIT, (1) 10PK OF RINGS, (4) RATCHET STRAPS
3	IACC-LTK-CVR	INTERIOR ACCESSORY, UNIVERSAL - SNAP IN L-TRACK COVER, ~8FT
OPTION 5: 360 CAMERA WITH DVR		
17.0 SAFETY (SFTY)		
1	SFTY-CAM-360-+DVR	SAFETY - 360 DEGREE EXTERNAL BIRDS EYE VIEW CAMERA SYSTEM, PLUS INTERNAL CAMERA MONITORING WITH DVR CAPABILITY, 10" DASH MOUNTED SCREEN
-1	SFTY-CAM-RVC	SAFETY - REAR VIEW CAMERA SYSTEM
OPTION 6: WI-FI		
14.0 NETWORKING (NTWK)		
1	NTWK-WIFI-8IN1	NETWORK, - CELLULAR GATEWAY, SIERRA AIRLINK MG-90 WIRELESS ROUTER, 8 IN 1 ANTENNA (REQUIRES CUSTOMER SUPPLIED SIM CARD AND ACTIVATION)
OPTION 7: GRAPHICS		
9.0 EXTERIOR ACCESSORY (XACC)		
1	XACC--GRPH-WRAP-TK-10K	EXTERIOR ACCESSORY, UNIVERSAL - GRAPHICS WRAP ALLOWANCE, \$10,000
OPTION 8: WORKSTATION CHAIRS		
5.1 INTERIOR ACCESSORY (IACC)		
2	IACC-CHR-SWV-02	INTERIOR ACCESSORY, UNIVERSAL - STAND UP WORKSTATION SWIVEL CHAIR WITH BUNGEE AND UNDER COUNTER TIEDOWN
OPTION 9: AWNING		
9.0 EXTERIOR ACCESSORY (XACC)		
1	XACC-AWN-L-21-BOX	EXTERIOR ACCESSORY, BOX - AWNING, ELECTRIC, 21FT
OPTION 10: ODYNE HYBRID DRIVELINE		
8.0 EXTERIOR COMPARTMENTS (XCPT)		
-1	XCPT-GEN-8KW-01	EXTERIOR COMPARTMENT, BOX - INSULATED ALUMINUM GENERATOR BOX, FLIP UP DOOR ACCESS, COMPRESSION LATCHES, FOR 8KW DIESEL GENERATOR (REQUIRES SEPARATE INSTALLATION KIT FOR VEHICLE/BODY TYPE)
-1	XCPT-ACC-GENKIT-78KW-BF	EXTERIOR COMPARTMENT ACCESSORY - 7 TO 8KW GENERATOR INSTALLATION KIT, BELOW FLOOR, INCLUDES BATTERY TRAY
-1	XCPT-BATT-4	EXTERIOR COMPARTMENT, BOX - UNDERBODY ALUMINUM BATTERY BOX, FLIP UP DOOR ACCESS, SLIDEOUT TRAY FOR 4 AGM OR 2 LITHIUM BATTERIES, COMPRESSION LATCHES



-1	XCPT-BOX-SHORE-01	EXTERIOR COMPARTMENT, BOX - UNDERBODY ALUMINUM SHORE POWER BOX, FLIP UP DOOR ACCESS, COMPRESSION LATCHES
1	XCPT-STO-OTS-24X24X60	EXTERIOR COMPARTMENT, BOX - UNDERBODY STEEL STORAGE BOX, LOCKING T-LATCH, 18 X 18 X 60, OTS, INCLUDES ADDING SUPPORT FRAMING
11.0 POWER SYSTEM (POWR)		
1	ETO-ODYNE SYSTEM	ENGINEER TO ORDER, POWER SYSTEM - ODYNE PTO HYBRID POWERSYSTEM, INSTALLED ON FREIGHTLINER CHASSIS
1	POWR-ODYNE	ODYNE POWER TRAIN ELECTRICAL BRIDGE SYSTEM, INCLUDES TOUCH SCREEN CONTROLS
1	ETO-CORD	SHORE CORD ADAPTER J1772 TO 50AMP CONNECTION SHIPPED LOOSE
-1	POWR-E3-12V-LIP2-TS	POWER SYSTEM - AC/DC 3000W ELECTRICAL PACKAGE (E3) W/ 2 LITHIUM BATTERIES, INCLUDES TOUCH SCREEN CONTROLS
-1	POWR-GEN-D-8KW-UNI	POWER SYSTEM, UNIVERSAL - DIESEL GENERATOR, 8K, 120VAC, 66.6A
-1	POWR-SHRLN-04	POWER SYSTEM - 50 AMP SHORELINE INLET CONNECTOR, STANDARD
-1	POWR-SRCD-50	POWER SYSTEM - 50 AMP SHORECORD, SHIPPED LOOSE
-1	POWR-SRCD-PGTL-30TL	POWER SYSTEM - SHORECORD PIGTAIL ADAPTER, 50 AMP TWIST LOCK CONNECTOR, SHIPPED LOOSE

Prepared by:
Russ Gebhard
GOLDEN GATE TRUCK
CENTER
8200 BALDWIN STREET
OAKLAND, CA 94621
Phone: 5106323535

Prepared by
GOLDEN GATE TRUCK CENTER
Russ Gebhard

Freightliner M2 106 Plus TECHOPS BOOK MOBILE



Components shown may not reflect all spec'd options and are not to scale

Application Version 12.0.105
Data Version PRL-29M.022
book mobile



01/09/2025 3:53 PM

Page 1 of 29

S P E C I F I C A T I O N P R O P O S A L

Data Code	Description	Weight Front	Weight Rear	Retail Price
Price Level				
PRL-29M	M2 PRL-29M (EFF:MY26 ORDERS)			STD
Data Version				
DRL-022	SPECPRO21 DATA RELEASE VER 022			N/C
Bright Work Packages				
024-001	BRIGHT WORK PACKAGE 1 - CHROMED: AIR INTAKE, GRILLE, HEADLIGHT BEZEL AND 14 INCH ROUND POLISHED AIR HORN			N/C
Vehicle Configuration				
001-172	M2 106 PLUS CONVENTIONAL CHASSIS	5,709	3,450	
004-226	2026 MODEL YEAR SPECIFIED			STD
002-004	SET BACK AXLE - TRUCK			STD
019-004	STRAIGHT TRUCK PROVISION, NON-TOWING			STD
003-001	LH PRIMARY STEERING LOCATION			STD
General Service				
AA1-002	TRUCK CONFIGURATION			STD
AA6-001	DOMICILED, USA 50 STATES (INCLUDING CALIFORNIA AND CARB OPT-IN STATES)			N/C
99D-018	CARB CLEAN IDLE LABELS FOR INITIAL REGISTRATION IN STATES REQUIRING CARB EMISSIONS CERTIFICATION - (INCLUDES 6X4 INCH LABEL ON LOWER FORWARD OF DRIVER DOOR)			
AF2-013	DOMICILED CALIFORNIA			N/C
A85-002	PICKUP AND DELIVERY/SHORT HAUL SERVICE			STD
A84-1GM	GOVERNMENT BUSINESS SEGMENT			N/C
AA4-011	FIXED LOAD COMMODITY			N/C
AA5-002	TERRAIN/DUTY: 100% (ALL) OF THE TIME, IN TRANSIT, IS SPENT ON PAVED ROADS			STD
AB1-008	MAXIMUM 8% EXPECTED GRADE			STD

Data Code	Description	Weight Front	Weight Rear	Retail Price
AB5-001	SMOOTH CONCRETE OR ASPHALT PAVEMENT - MOST SEVERE IN-TRANSIT (BETWEEN SITES) ROAD SURFACE			STD
995-091	MEDIUM TRUCK WARRANTY			STD
A66-99D	EXPECTED FRONT AXLE(S) LOAD : 8000.0 lbs			
A68-99D	EXPECTED REAR DRIVE AXLE(S) LOAD : 18000.0 lbs			
A63-99D	EXPECTED GROSS VEHICLE WEIGHT CAPACITY : 26000.0 lbs			

Truck Service

AA3-001	DRY VAN BODY			STD
AF3-1A2	MORGAN BODY COMPANY			N/C
AF7-99D	EXPECTED BODY/PAYLOAD CG HEIGHT ABOVE FRAME "XX" INCHES : 32.0 in			

Engine

N	101-21U	CUM B6.7 250 HP @ 2400 RPM, 2600 GOV, 660 LB-FT @ 1600 RPM
---	---------	---

Electronic Parameters

79A-070	70 MPH ROAD SPEED LIMIT	N/C
79B-000	CRUISE CONTROL SPEED LIMIT SAME AS ROAD SPEED LIMIT	N/C
79G-105	5 MINUTE IDLE SHUTDOWN - CONTINUOUS OVERRIDE WITH CLUTCH AND SERVICE BRAKE	N/C
79P-007	PTO RPM WITH CRUISE SET SWITCH - 1100 RPM	N/C
79U-004	PTO GOVERNOR RAMP RATE - 100 RPM PER SECOND	N/C
79V-001	FUEL DOSING OF AFTERTREATMENT ENABLED IN PTO MODE-CLEANS HYDROCARBONS AT HIGH TEMPERATURES ONLY	N/C
79W-024	CRUISE CONTROL BUTTON PTO CONTROL	N/C
80G-002	PTO MINIMUM RPM - 700	N/C
80S-001	PTO 1, DASH SWITCH, STATIONARY OPERATION	N/C

Engine Equipment

99C-124	EPA 2010 GHG 2024/CARB 2024 ULTRALOW NOX CONFIGURATION	N/C
13E-001	STANDARD OIL PAN	STD
105-001	ENGINE MOUNTED OIL CHECK AND FILL	STD
014-099	SIDE OF HOOD AIR INTAKE WITH FIREWALL MOUNTED DONALDSON AIR CLEANER	STD

Data Code	Description	Weight Front	Weight Rear	Retail Price
124-1F3	LN 12V 240 AMP AVI 160 PAD MOUNT ALTERNATOR	10		
292-205	(2) DTNA GENUINE, FLOODED STARTING, MIN 1900CCA, 350RC, THREADED STUD BATTERIES			STD
290-017	BATTERY BOX FRAME MOUNTED			STD
281-001	STANDARD BATTERY JUMPERS			STD
282-001	SINGLE BATTERY BOX FRAME MOUNTED LH SIDE UNDER CAB			STD
291-017	WIRE GROUND RETURN FOR BATTERY CABLES WITH ADDITIONAL FRAME GROUND RETURN			STD
289-001	NON-POLISHED BATTERY BOX COVER			STD
293-060	NON-ESSENTIAL POSITIVE LOAD DISCONNECT, LOCKING IN CAB CONTROL SWITCH MOUNTED OUTBOARD OF DRIVER SEAT	2		
295-003	POSITIVE AND NEGATIVE POSTS FOR JUMPSTART CHASSIS MOUNTED LH BACK OF CAB	4		
306-015	PROGRESSIVE LOW VOLTAGE DISCONNECT AT 12.3 VOLTS FOR DESIGNATED CIRCUITS	2		STD
107-032	CUMMINS TURBOCHARGED 18.7 CFM AIR COMPRESSOR WITH INTERNAL SAFETY VALVE			STD
108-002	STANDARD MECHANICAL AIR COMPRESSOR GOVERNOR			STD
131-013	AIR COMPRESSOR DISCHARGE LINE			STD
152-041	ELECTRONIC ENGINE INTEGRAL SHUTDOWN PROTECTION SYSTEM			STD
128-1AR	CUMMINS ENGINE INTEGRAL BRAKE WITH VARIABLE GEOMETRY TURBO ON/OFF WITH BRAKE LAMPS	20		
016-1DC	RH OUTBOARD UNDER STEP MOUNTED HORIZONTAL AFTERTREATMENT SYSTEM ASSEMBLY WITH RH HORIZONTAL TAILPIPE EXITING FORWARD OF REAR TIRES	10	5	
28F-014	ENGINE AFTERTREATMENT DEVICE, AUTOMATIC OVER THE ROAD REGENERATION AND VIRTUAL REGENERATION REQUEST SWITCH IN CLUSTER			STD
239-001	STANDARD EXHAUST SYSTEM LENGTH			STD
237-022	RH HORIZONTAL TAILPIPE, EXIT FORWARD OF REAR TIRES	20	20	N/C
23U-001	6 GALLON DIESEL EXHAUST FLUID TANK			STD
30N-003	100 PERCENT DIESEL EXHAUST FLUID FILL			STD
43X-002	LH MEDIUM DUTY STANDARD DIESEL EXHAUST FLUID TANK LOCATION			STD

Data Code	Description	Weight Front	Weight Rear	Retail Price
23Y-002	DIESEL EXHAUST FLUID PUMP MOUNTED AFT OF DIESEL EXHAUST FLUID TANK			
43Y-001	STANDARD DIESEL EXHAUST FLUID TANK CAP			STD
242-998	NO MUFFLER/TAILOPIPE SHIELD	-10		STD
273-058	AIR POWERED ON/OFF ENGINE FAN CLUTCH			STD
276-001	AUTOMATIC FAN CONTROL WITHOUT DASH SWITCH, NON ENGINE MOUNTED			STD
110-003	CUMMINS SPIN ON FUEL FILTER			STD
118-001	FULL FLOW OIL FILTER			STD
120-998	NO COOLANT FILTER	-10		STD
266-100	700 SQUARE INCH ALUMINUM RADIATOR			STD
103-039	ANTIFREEZE TO -34F, OAT (NITRITE AND SILICATE FREE) EXTENDED LIFE COOLANT			STD
171-007	GATES BLUE STRIPE COOLANT HOSES OR EQUIVALENT			STD
172-001	CONSTANT TENSION HOSE CLAMPS FOR COOLANT HOSES			STD
270-016	RADIATOR DRAIN VALVE			STD
168-002	LOWER RADIATOR GUARD			STD
138-010	PHILLIPS-TEMRO 750 WATT/115 VOLT BLOCK HEATER	4		
140-053	BLACK PLASTIC ENGINE HEATER RECEPTACLE MOUNTED UNDER LH DOOR			N/C
134-001	ALUMINUM FLYWHEEL HOUSING			STD
132-004	ELECTRIC GRID AIR INTAKE WARMER			STD
155-057	DELCO 12V 29MT STARTER WITH INTEGRATED MAGNETIC SWITCH			STD

Transmission

342-1MM	ALLISON 2200 RDS AUTOMATIC TRANSMISSION WITH PARK PAWL WITH PTO PROVISION
---------	--

Transmission Equipment

343-301	ALLISON VOCATIONAL PACKAGE 354 - AVAILABLE ON 1000/2000 PRODUCT FAMILIES WITH VOCATIONAL MODELS RDS, EVS, HS, MH, PTS AND SPS	STD
84B-012	ALLISON VOCATIONAL RATING FOR ON/OFF HIGHWAY APPLICATIONS AVAILABLE WITH ALL PRODUCT FAMILIES	N/C
84C-003	PRIMARY MODE GEARS, 5 FORWARD GEARS WITH MANUAL SELECTION FOR 3, 2 AND 1, AVAILABLE FOR 1000/2000 PRODUCT FAMILIES ONLY	N/C

Data Code	Description	Weight Front	Weight Rear	Retail Price
84E-000	PRIMARY SHIFT SCHEDULE RECOMMENDED BY DTNA AND ALLISON, THIS DEFINED BY ENGINE AND VOCATIONAL USAGE			STD
84F-000	SECONDARY SHIFT SCHEDULE RECOMMENDED BY DTNA AND ALLISON, THIS DEFINED BY ENGINE AND VOCATIONAL USAGE			STD
84G-000	PRIMARY SHIFT SPEED RECOMMENDED BY DTNA AND ALLISON, THIS DEFINED BY ENGINE AND VOCATIONAL USAGE			STD
84H-000	SECONDARY SHIFT SPEED RECOMMENDED BY DTNA AND ALLISON, THIS DEFINED BY ENGINE AND VOCATIONAL USAGE			STD
84J-000	ENGINE BRAKE RANGE PRESELECT RECOMMENDED BY DTNA AND ALLISON, THIS DEFINED BY ENGINE AND VOCATIONAL USAGE			STD
84K-000	ENGINE BRAKE RANGE ALTERNATE PRESELECT RECOMMENDED BY DTNA AND ALLISON, THIS DEFINED BY ENGINE AND VOCATIONAL USAGE			STD
84N-011	NEUTRAL AT STOP ENABLED			
84U-000	DRIVER SWITCH INPUT - DEFAULT - NO SWITCHES			STD
353-075	QUICKFIT BODY LIGHTING CONNECTOR AT END OF FRAME, WITH CAP			
34C-011	ELECTRONIC TRANSMISSION WIRING TO CUSTOMER INTERFACE CONNECTOR			
362-802	CUSTOMER INSTALLED CHELSEA 442 SERIES PTO			N/C
363-001	PTO MOUNTING, LH SIDE OF MAIN TRANSMISSION ALLISON			N/C
341-018	MAGNETIC PLUGS, ENGINE DRAIN, TRANSMISSION DRAIN, AXLE(S) FILL AND DRAIN			STD
345-074	DASH MOUNTED T-HANDLE CABLE SHIFT CONTROL WITH PARK POSITION FOR INTERNAL PARK PAWL			N/C
97G-006	TRANSMISSION PROGNOSTICS - DISABLED (N/A) 2013, FOR USE IN 1000/2000 ONLY			STD
370-015	WATER TO OIL TRANSMISSION COOLER, IN RADIATOR END TANK	15		STD
346-001	TRANSMISSION OIL CHECK AND FILL			STD
35T-001	SYNTHETIC TRANSMISSION FLUID (TES-295 COMPLIANT)			STD

Front Axle and Equipment

Data Code	Description	Weight Front	Weight Rear	Retail Price
400-1A5	DETROIT DA-F-10.0-3 10,000# FF1 71.5 KPI/3.74 DROP SINGLE FRONT AXLE			N/C
402-021	MERITOR 15X5 Q+ CAST SPIDER CAM FRONT BRAKES, DOUBLE ANCHOR, FABRICATED SHOES			
403-002	NON-ASBESTOS FRONT BRAKE LINING			STD
419-023	CONMET CAST IRON FRONT BRAKE DRUMS			
409-006	FRONT OIL SEALS			STD
408-001	VENTED FRONT HUB CAPS WITH WINDOW, CENTER AND SIDE PLUGS - OIL			STD
416-022	STANDARD SPINDLE NUTS FOR ALL AXLES			STD
405-003	HALDEX AUTOMATIC FRONT SLACK ADJUSTERS			
536-050	TRW THP-60 POWER STEERING			STD
539-003	POWER STEERING PUMP			STD
534-015	2 QUART SEE THROUGH POWER STEERING RESERVOIR			STD
40T-004	GUARANTEED NAME BRAND "ROADRANGER SYNTHETIC" FE 75W-90 FRONT AXLE LUBE			

Front Suspension

620-062	10,000# TAPERLEAF FRONT SUSPENSION			
619-005	MAINTENANCE FREE RUBBER BUSHINGS - FRONT SUSPENSION			STD
410-001	FRONT SHOCK ABSORBERS			STD

Rear Axle and Equipment

420-1F9	DETROIT DA-RS-19.0-2 19,000# R-SERIES SINGLE REAR AXLE		-170	
421-478	4.78 REAR AXLE RATIO			N/C
424-001	IRON REAR AXLE CARRIER WITH STANDARD AXLE HOUSING			STD
386-079	MXL 16T MERITOR EXTENDED LUBE MAIN DRIVELINE WITH HALF ROUND YOKES	10	10	
423-028	MERITOR 15X8.62 Q+ CAST SPIDER CAM REAR BRAKES, DOUBLE ANCHOR, FABRICATED SHOES		-20	
433-002	NON-ASBESTOS REAR BRAKE LINING			STD
434-005	BRAKE CAMS AND CHAMBERS ON FORWARD SIDE OF DRIVE AXLE(S) WITH AUXILIARY SUPPORT BRACKETS			STD
N 451-001	CAST IRON OUTBOARD REAR BRAKE DRUMS		20	STD
440-006	REAR OIL SEALS			STD

Data Code	Description	Weight Front	Weight Rear	Retail Price
426-1B2	BENDIX EVERSURE LONGSTROKE 1-DRIVE AXLE SPRING PARKING CHAMBERS			
428-003	HALDEX AUTOMATIC REAR SLACK ADJUSTERS			
41T-003	GUARANTEED NAME BRAND "ROADRANGER SYNTHETIC" FE 75W-90 REAR AXLE LUBE			
Rear Suspension				
622-282	AIRLINER 18,000# REAR SUSPENSION		-20	
621-046	AIRLINER MID POSITION RIDE HEIGHT			N/C
431-001	STANDARD AXLE SEATS IN AXLE CLAMP GROUP			N/C
888-078	IGNITION CONTROLLED ELECTRIC DUMP SWITCH FOR AIR SUSPENSION WITH STATE RETENTION AND GAUGE			
87D-011	REAR AIR SUSPENSION DUMP VALVE AUTOFILL >5 MPH WITH BUZZER AND INDICATOR LIGHT			N/C
910-004	DUAL AIR REAR SUSPENSION LEVELING VALVES			
623-002	TRANSVERSE CONTROL RODS			STD
439-004	REAR SHOCK ABSORBERS - ONE AXLE (AIR RIDE SUSPENSION)			STD
Pusher / Tag Equipment				
429-998	NO PUSHER/TAG BRAKE DUST SHIELDS			STD
Brake System				
018-002	AIR BRAKE PACKAGE			STD
490-121	WABCO 4S/4M ABS WITH TRACTION CONTROL			STD
871-001	REINFORCED NYLON, FABRIC BRAID AND WIRE BRAID CHASSIS AIR LINES			STD
904-001	FIBER BRAID PARKING BRAKE HOSE			STD
412-001	STANDARD BRAKE SYSTEM VALVES			STD
46D-002	STANDARD AIR SYSTEM PRESSURE PROTECTION SYSTEM			STD
413-002	STD U.S. FRONT BRAKE VALVE			STD
432-003	RELAY VALVE WITH 5-8 PSI CRACK PRESSURE, NO REAR PROPORTIONING VALVE			STD
480-086	BW AD-9SI BRAKE LINE AIR DRYER WITH HEATER			
479-012	AIR DRYER MOUNTED UNDER HOOD			N/C
* 460-008	STEEL AIR BRAKE RESERVOIRS MOUNTED INSIDE RAIL			
	INSTALL INSIDE RIGHT SIDE RAIL TOWARDS REAR SUSPENSION			

	Data Code	Description	Weight Front	Weight Rear	Retail Price
	477-001	PULL CABLE ON WET TANK, PETCOCK DRAIN VALVES ON ALL OTHER AIR TANKS			STD
Trailer Connections					
	481-998	NO TRAILER AIR HOSE			STD
	476-998	NO AIR HOSE HANGER			STD
N	30K-069	BODY BUILDER HIGH CURRENT, 200 AMP, BLUNT CUT CABLES, IN RAIL, RH END OF FRAME, 20 FEET ADDITIONAL CABLE, SWITCH LABELED LIFT GATE, LOW VOLTAGE & PARK BRAKE INTLK			
	310-998	NO TRAILER ELECTRICAL CABLE			STD
Wheelbase & Frame					
	545-600	6000MM (236 INCH) WHEELBASE			N/C
	546-100	11/32X3-1/2X10-3/16 INCH STEEL FRAME (8.73MMX258.8MM/0.344X10.19 INCH) 120KSI	280	90	
	552-007	2450MM (96 INCH) REAR FRAME OVERHANG			N/C
	55W-009	FRAME OVERHANG RANGE: 91 INCH TO 100 INCH	-40	170	N/C
	AC8-99D	CALC'D BACK OF CAB TO REAR SUSP C/L (CA) : 170.67 in			
	AE8-99D	CALCULATED EFFECTIVE BACK OF CAB TO REAR SUSPENSION C/L (CA) : 167.67 in			
	AE4-99D	CALC'D FRAME LENGTH - OVERALL : 371.7 in			
	FSS-0LH	CALCULATED FRAME SPACE LH SIDE : 140.26 in			N/C
	FSS-0RH	CALCULATED FRAME SPACE RH SIDE : 147.87 in			N/C
	AM6-99D	CALC'D SPACE AVAILABLE FOR DECKPLATE : 0.0 in			
	553-001	SQUARE END OF FRAME			STD
	587-003	REAR TOW HOOKS		10	
	550-001	FRONT CLOSING CROSSMEMBER			STD
	559-001	STANDARD WEIGHT ENGINE CROSSMEMBER			STD
	561-001	STANDARD CROSSMEMBER BACK OF TRANSMISSION			STD
	562-001	STANDARD MIDSHIP #1 CROSSMEMBER(S)			STD
	572-001	STANDARD REARMOST CROSSMEMBER			STD
	565-001	STANDARD SUSPENSION CROSSMEMBER			STD
Chassis Equipment					

Data Code	Description	Weight Front	Weight Rear	Retail Price
556-1CU	THREE-PIECE 14 INCH PAINTED STEEL BUMPER WITH COLLAPSIBLE ENDS, SPACED 3 INCHES FORWARD	40		
558-001	FRONT TOW HOOKS - FRAME MOUNTED	15		
574-011	SINGLE LICENSE PLATE BUMPER MOUNTING ON LH SIDE			STD
585-998	NO MUDFLAP BRACKETS			STD
590-998	NO REAR MUDFLAPS			STD
586-024	FENDER AND FRONT OF HOOD MOUNTED FRONT MUDFLAPS			STD
551-007	GRADE 8 THREADED HEX HEADED FRAME FASTENERS			STD
44Z-002	EXTERIOR HARNESES WRAPPED IN ABRASION TAPE			STD
605-003	LEVEL FRAME RAILS (+/- 1%) WHEN CHASSIS IS LOADED TO FRONT AND REAR SUSPENSION RATINGS			
* 601-020	3D STEP VEHICLE MODEL			

JSAMORA@TECHOPSSV.COM JEN SAMORA 443-848-2906

Fifth Wheel

578-998	NO FIFTH WHEEL			STD
---------	----------------	--	--	-----

Fuel Tanks

204-190	40 GALLON/151 LITER RECTANGULAR ALUMINUM FUEL TANK - LH	10		
218-005	RECTANGULAR FUEL TANK(S)			STD
215-022	POLISHING OF FUEL/HYDRAULIC TANK(S) WITH PAINTED ZINC-PLATED STEEL BANDS			
212-007	FUEL TANK(S) FORWARD			STD
664-004	POLISHED STAINLESS STEEL STEP FINISH			
207-005	FUEL TANK FILLER NECK ANTI-SIPHON INSERT			
205-001	FUEL TANK CAP(S)			STD
122-1J2	DETROIT FUEL/WATER SEPARATOR WITH WATER IN FUEL SENSOR AND HAND PRIMER	-5		STD
216-020	EQUIFLO INBOARD FUEL SYSTEM			STD
20E-004	AUXILIARY FUEL SUPPLY AND RETURN PORTS LOCATED ON LH FUEL TANK			
202-016	HIGH TEMPERATURE REINFORCED NYLON FUEL LINE			STD

Tires

093-16R	MICHELIN AGILIS HDZ 245/70R19.5 16 PLY RADIAL FRONT TIRES	8		
---------	--	---	--	--

Data Code	Description	Weight Front	Weight Rear	Retail Price
094-16R	MICHELIN AGILIS HDZ 245/70R19.5 16 PLY RADIAL REAR TIRES		16	
Hubs				
418-060	CONMET PRESET PLUS PREMIUM IRON FRONT HUBS			STD
450-060	CONMET PRESET PLUS PREMIUM IRON REAR HUBS			STD
Wheels				
502-1E5	ALCOA 77362X 19.5X7.50 10-HUB PILOT 5.23 INSET ALUMINUM DISC FRONT WHEELS	-64		
505-1E5	ALCOA 77362X 19.5X7.50 10-HUB PILOT ALUMINUM DISC REAR WHEELS		-128	
524-001	POLISHED FRONT WHEELS; OUTSIDE ONLY			
525-001	POLISHED REAR WHEELS; OUTSIDE OF OUTER WHEELS ONLY			
496-011	FRONT WHEEL MOUNTING NUTS			STD
497-011	REAR WHEEL MOUNTING NUTS			STD
Cab Exterior				
829-071	106 INCH BBC FLAT ROOF ALUMINUM CONVENTIONAL CAB			STD
682-050	WALK THROUGH OPENING IN BACK OF CAB WITHOUT BOOT			
650-008	AIR CAB MOUNTING			
648-002	NONREMOVABLE BUGSCREEN MOUNTED BEHIND GRILLE			
678-067	SAFETY YELLOW LH AND RH INTERIOR GRAB HANDLES AND LH AND RH EXTERIOR GRAB HANDLES WITH SINGLE RUBBER INSERT			
646-023	HOOD MOUNTED CHROMED PLASTIC GRILLE			
65X-003	CHROME HOOD MOUNTED AIR INTAKE GRILLE			
644-004	FIBERGLASS HOOD			STD
690-007	HOOD LINER INSULATION WITH SINGLE FIREWALL INSULATION			
727-1AF	SINGLE 14 INCH ROUND HADLEY AIR HORN UNDER LH DECK	4		
726-001	SINGLE ELECTRIC HORN			STD
575-001	REAR LICENSE PLATE MOUNT END OF FRAME			STD
312-088	LED HEADLIGHT ASSEMBLY AND INCANDESCENT MARKER/TURN LAMP WITH CHROME BEZEL			
302-047	LED AERODYNAMIC MARKER LIGHTS			STD

Data Code	Description	Weight Front	Weight Rear	Retail Price
311-019	HEADLIGHTS ON WITH WIPERS, WITH DAYTIME RUNNING LIGHTS			
294-001	INTEGRAL STOP/TAIL/BACKUP LIGHTS			STD
300-015	STANDARD FRONT TURN SIGNAL LAMPS			STD
318-032	SWITCH, INDICATOR LIGHT AND APPROXIMATELY 10 FEET OF WIRE ON CHASSIS RH BACK OF CAB FOR CUSTOMER FURNISHED UTILITY LIGHT(S)			
744-103	DUAL WEST COAST BRIGHT FINISH HEATED MIRRORS WITH LED LIGHTS AND LH AND RH REMOTE			
797-001	DOOR MOUNTED MIRRORS			STD
796-001	102 INCH EQUIPMENT WIDTH			STD
743-204	LH AND RH 8 INCH BRIGHT FINISH CONVEX MIRRORS MOUNTED UNDER PRIMARY MIRRORS			N/C
74A-001	RH DOWN VIEW MIRROR			
729-001	STANDARD SIDE/REAR REFLECTORS			STD
677-055	RH AFTERTREATMENT SYSTEM CAB ACCESS WITH POLISHED DIAMOND PLATE COVER			
768-998	NO REAR WINDOW	-20		
661-003	TINTED DOOR GLASS LH AND RH WITH TINTED NON-OPERATING WING WINDOWS			STD
654-011	RH AND LH ELECTRIC POWERED WINDOWS			STD
769-002	LOWER RH DOOR WINDOW WITH FRESNEL LENS	7		
663-013	1-PIECE SOLAR GREEN GLASS WINDSHIELD			STD
659-019	2 GALLON WINDSHIELD WASHER RESERVOIR WITHOUT FLUID LEVEL INDICATOR, FRAME MOUNTED			STD
647-001	WHITE WINTERFRONT	2		

Cab Interior

055-017	PROFESSIONAL TRIM PACKAGE			STD
707-105	MIST AND CARBON CLOTH INTERIOR "PROFESSIONAL"			STD
70K-016	CARBON WITH BASE BLACK ACCENT			STD
706-013	MOLDED PLASTIC DOOR PANEL			STD
708-013	MOLDED PLASTIC DOOR PANEL			STD
772-006	BLACK MATS WITH SINGLE INSULATION			STD
785-026	(1)DASH MOUNTED 12V POWER OUTLET, (1)DASH MOUNTED DUAL USB-C OUTLET			
691-001	FORWARD ROOF MOUNTED CONSOLE			STD

Data Code	Description	Weight Front	Weight Rear	Retail Price
693-036	LH DOOR STORAGE POCKET			
738-021	DIGITAL ALARM CLOCK IN DRIVER DISPLAY			STD
742-007	(2) CUP HOLDERS LH AND RH DASH			STD
680-029	M2/SD DASH			STD
720-003	5 LB. FIRE EXTINGUISHER	10		
700-002	HEATER, DEFROSTER AND AIR CONDITIONER			STD
701-001	STANDARD HVAC DUCTING			STD
703-005	MAIN HVAC CONTROLS WITH RECIRCULATION SWITCH			STD
170-015	STANDARD HEATER PLUMBING			STD
130-041	VALEO HEAVY DUTY A/C REFRIGERANT COMPRESSOR			STD
702-002	BINARY CONTROL, R-134A			STD
739-034	PREMIUM INSULATION			
285-013	SOLID-STATE CIRCUIT PROTECTION AND FUSES			STD
280-007	12V NEGATIVE GROUND ELECTRICAL SYSTEM			STD
324-1B2	PREMIUM LED CAB LIGHTING			
787-004	REMOTE KEYLESS ENTRY AND 2 TRANSMITTERS	2		STD
657-001	DOOR LOCKS AND IGNITION SWITCH KEYED THE SAME			STD
78G-004	KEY QUANTITY OF 4			
655-005	LH AND RH ELECTRIC DOOR LOCKS			STD
740-998	NO MATTRESS	-20	-15	STD
722-028	TRIANGULAR REFLECTORS KIT WITHOUT FLARES SHIPPED LOOSE IN CAB	10		
756-339	PREMIUM ISRINGHAUSEN HIGH BACK AIR SUSPENSION DRIVERS SEAT WITH 2 AIR LUMBAR, INTEGRATED CUSHION EXTENSION, TILT AND ADJUSTABLE SHOCK	70		
760-339	PREMIUM ISRINGHAUSEN HIGH BACK AIR SUSPENSION PASSENGER SEAT WITH 2 AIR LUMBAR, INTEGRATED CUSHION EXTENSION, TILT AND ADJUSTABLE SHOCK	60	20	
759-002	INBOARD DRIVER AND PASSENGER SEAT ARMRESTS	4		
711-004	LH AND RH INTEGRAL DOOR PANEL ARMRESTS			STD
758-1AK	BLACK VINYL DRIVER SEAT COVER			STD
761-1AK	BLACK VINYL PASSENGER SEAT COVER			STD
763-101	BLACK SEAT BELTS			STD

Data Code	Description	Weight Front	Weight Rear	Retail Price
532-002	ADJUSTABLE TILT AND TELESCOPING STEERING COLUMN			STD
540-044	4-SPOKE 18 INCH (450MM) BLACK STEERING WHEEL WITH SWITCHES			STD
765-002	DRIVER AND PASSENGER INTERIOR SUN VISORS			STD
Instruments & Controls				
106-002	ELECTRONIC ACCELERATOR CONTROL			STD
732-998	NO INSTRUMENT PANEL-DRIVER			STD
734-023	CONFIGURABLE LOWER PANEL WITH INTEGRATED UPPER STORAGE			
87L-001	ENGINE REMOTE INTERFACE WITH PARK BRAKE INTERLOCK			N/C
870-001	BLACK GAUGE BEZELS			STD
486-001	LOW AIR PRESSURE INDICATOR LIGHT AND AUDIBLE ALARM			STD
840-001	DUAL NEEDLE PRIMARY AND SECONDARY AIR PRESSURE GAUGE			STD
198-003	DASH MOUNTED AIR RESTRICTION INDICATOR WITH GRADUATIONS			
721-001	97 DB BACKUP ALARM		3	
149-015	ELECTRONIC CRUISE CONTROL WITH CONTROLS ON STEERING WHEEL SPOKES			STD
156-007	KEY OPERATED IGNITION SWITCH AND INTEGRAL START POSITION; 4 POSITION OFF/RUN/START/ACCESSORY			STD
811-044	PREMIUM INSTRUMENT CLUSTER WITH 5.0 INCH TFT COLOR DISPLAY			STD
81B-003	DIGITAL PANEL LAMP DIMMER SWITCH IN DRIVER DISPLAY			STD
160-038	HEAVY DUTY ONBOARD DIAGNOSTICS INTERFACE CONNECTOR LOCATED BELOW LH DASH			STD
844-001	2 INCH ELECTRIC FUEL GAUGE			STD
148-073	ENGINE REMOTE INTERFACE FOR REMOTE THROTTLE			
48H-003	QUICKFIT POWERTRAIN INTERFACE CONNECTOR UNDER CAB WITH CAPS			
48C-003	QUICKFIT PROGRAMMABLE INTERFACE CONNECTOR(S) UNDER CAB WITH CAP			
163-014	ENGINE REMOTE INTERFACE CONNECTOR AT POWERTRAIN INTERFACE CONNECTOR			N/C

	Data Code	Description	Weight Front	Weight Rear	Retail Price
	856-001	ELECTRICAL ENGINE COOLANT TEMPERATURE GAUGE			STD
	864-001	2 INCH TRANSMISSION OIL TEMPERATURE GAUGE			
	867-004	ELECTRONIC OUTSIDE TEMPERATURE SENSOR DISPLAY IN DRIVER MESSAGE CENTER			STD
	830-017	ENGINE AND TRIP HOUR METERS INTEGRAL WITHIN DRIVER DISPLAY			STD
	372-123	PTO CONTROLS FOR ENHANCED VEHICLE ELECTRIC/ELECTRONIC ARCHITECTURE			
	736-139	DETROIT ASSURANCE, ACTIVE BRAKE ASSIST 5, WITHOUT ADAPTIVE CRUISE CONTROL			STD
	72J-002	SIDE GUARD ASSIST PHYSICAL OFF SWITCH (IF EQUIPPED), TRAFFIC SIGN DISPLAY VIRTUAL OFF SWITCH (IF EQUIPPED) - (NO ACTIVE BRAKE ASSIST OFF SWITCH)			STD
	3ZS-010	DETROIT CONNECT VIDEO CAPTURE WITH MPC2	5		
	49B-006	ELECTRONIC STABILITY CONTROL, 4X2 W/SAFETY MIN BODY WEIGHT EXCEEDS 4,000LBS REQ			STD
	73B-031	DETROIT ASSURANCE 5.0 LANE DEPARTURE WARNING SYSTEM WITH 15 MINUTE OFF TIMEOUT DASH SWITCH	10		STD
	852-002	ELECTRIC ENGINE OIL PRESSURE GAUGE			STD
	679-998	NO OVERHEAD INSTRUMENT PANEL			STD
	35M-010	1 QUICKFIT PROGRAMABLE MODULE (QPM/XMC)	10		
	786-113	GENERIC TELEMATICS PREWIRE (CONSTANT BATTERY POWER/IGNITION/GROUND/J1939); RP1226 TYPE CONNECTOR AT PASSENGER SIDE OF DASH			
N	78A-066	RAM MOUNT DEVICE PREP: INCLUDES PASS-THROUGH FOR WIRE			
	1U1-002	TOP OF DASH RAM MOUNT WITHOUT POWER OR GROUND, FOR CUSTOMER FURNISHED DEVICE			
N	746-137	AM/FM/WB WORLD TUNER RADIO WITH BLUETOOTH, USB AND AUXILIARY INPUTS, J1939			N/C
	747-001	DASH MOUNTED RADIO			STD
	750-002	(2) RADIO SPEAKERS IN CAB			STD
	753-008	AM/FM ANTENNA MOUNTED ON LH SIDE MIRROR			

Data Code	Description	Weight Front	Weight Rear	Retail Price
749-998	NO CB RADIO MOUNTING PROVISION			STD
75W-998	NO MULTIBAND ANTENNA			
78C-998	NO DIGITAL SATELLITE AUDIO RECEIVER ANTENNA			
74D-006	STANDARD RADIO WIRING WITH STEERING WHEEL CONTROLS			STD
810-027	ELECTRONIC MPH SPEEDOMETER WITH SECONDARY KPH SCALE, WITHOUT ODOMETER			STD
817-001	STANDARD VEHICLE SPEED SENSOR			STD
812-001	ELECTRONIC 3000 RPM TACHOMETER			STD
813-1C8	DETROIT CONNECT PLATFORM HARDWARE			STD
8D1-313	3 YEARS DAIMLER CONNECTIVITY BASE PACKAGE ON (FEATURES VARY BY MODEL) POWERED BY DETROIT CONNECT ON CUMMINS ENGINES			STD
8D3-103	3 YEARS DETROIT CONNECT SAFETY EVENT VIEWER PACKAGE FOR DETROIT ASSURANCE DETROIT CONNECT PLATFORM			STD
8D5-101	1 YEAR DETROIT CONNECT VIDEO CAPTURE PACKAGE			N/C
8DE-301	1 YEAR DETROIT CONNECT CONNECT CORE EXTENSION PACKAGE (FEATURES VARY BY MODEL) CUMMINS POWERTRAIN			N/C
6TS-008	(2) TMC RP1226 ACCESSORY CONNECTORS: (1) LOCATED BEHIND PASSENGER SIDE REMOVABLE DASH PANEL (1) CENTER OF OVERHEAD CONSOLE			
162-002	IGNITION SWITCH CONTROLLED ENGINE STOP			STD
81Y-006	PRE-TRIP INSPECTION FEATURE FOR EXTERIOR LAMPS AND SERVICE BRAKES			
264-030	(1) OVERHEAD MOUNTED LANYARD CONTROL FOR DRIVER AIR HORN			
883-998	NO TRAILER HAND CONTROL BRAKE VALVE			STD
842-006	DIGITAL TURBO AIR PRESSURE IN DRIVER DISPLAY			N/C
836-015	DIGITAL VOLTAGE DISPLAY INTEGRAL WITH DRIVER DISPLAY			STD
660-008	SINGLE ELECTRIC WINDSHIELD WIPER MOTOR WITH DELAY			STD
304-030	ROTARY HEADLAMP SWITCH, MARKER LIGHTS/HEADLIGHTS SWITCH WITH PULL OUT FOR OPTIONAL FOG/ROAD LAMPS			N/C
882-009	ONE VALVE PARKING BRAKE SYSTEM WITH WARNING INDICATOR			STD

Data Code	Description	Weight Front	Weight Rear	Retail Price
299-020	SELF CANCELING TURN SIGNAL SWITCH WITH DIMMER, HEADLAMP FLASH, WASH/WIPE/INTERMITTENT			STD
298-046	INTEGRAL ELECTRONIC TURN SIGNAL FLASHER WITH 40 AMP (20 AMP PER SIDE) TRAILER LAMP CAPACITY			STD
Design				
065-000	PAINT: ONE SOLID COLOR			STD
Color				
980-5F6	CAB COLOR A: L0006EY WHITE ELITE EY			STD
986-020	BLACK, HIGH SOLIDS POLYURETHANE CHASSIS PAINT			STD
964-6Z7	BUMPER PAINT: FP24812 ARGENT SILVER DUPONT FLEX			STD
963-003	STANDARD E COAT/UNDERCOATING			STD
Certification / Compliance				
996-001	U.S. FMVSS CERTIFICATION, EXCEPT SALES CABS AND GLIDER KITS			STD
Sales Programs				
PMY-3G5	BUSINESS QUOTE SALES PROGRAM			N/C

TOTAL VEHICLE SUMMARY

Adjusted List Price

Adjusted List Price **

Weight Summary

	Weight Front	Weight Rear	Total Weight
Factory Weight ⁺	6184 lbs	3461 lbs	9645 lbs
Total Weight ⁺	6184 lbs	3461 lbs	9645 lbs

ITEMS NOT INCLUDED IN ADJUSTED LIST PRICE

Other Factory Charges

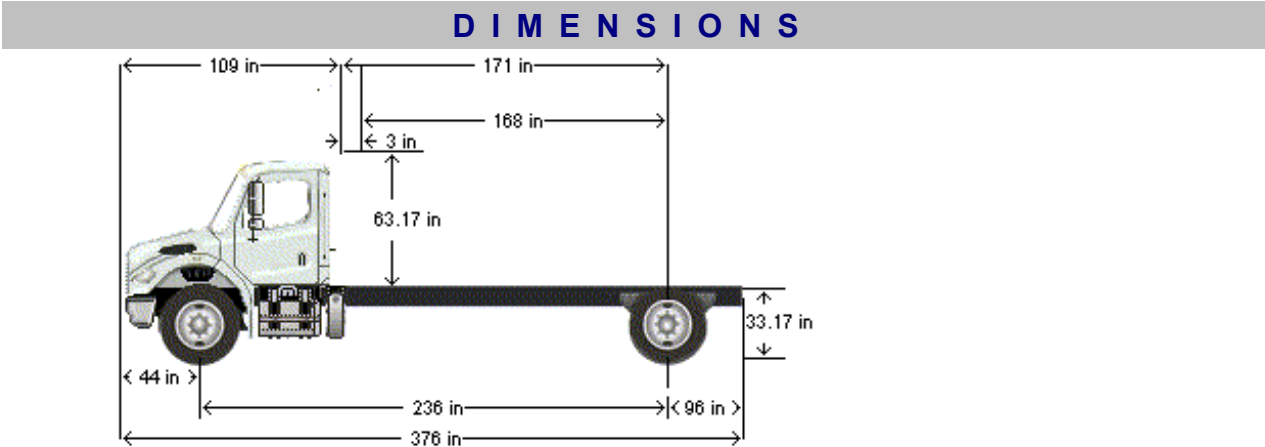
PNZ-001	CARB-COMPLIANT BASE WARRANTY DD5/DD8 SS/B6.7/L9 <=325	\$1,215.00
PMV-024	GHG24 SURCHARGE - CUMMINS	\$791.00
PNV-003	CARB24 CUMMINS PRICING	\$9,000.00
RDE-301	1 YEAR DETROIT CONNECT CONNECT CORE EXTENSION PACKAGE (FEATURES VARY BY MODEL) CUMMINS POWERTRAIN	\$108.00
RD1-313	3 YEARS DAIMLER CONNECTIVITY BASE PACKAGE ON (FEATURES VARY BY MODEL) POWERED BYDETROIT CONNECT ON CUMMINS ENGINES	STD
RD3-103	3 YEARS DETROIT CONNECT SAFETY EVENT VIEWER PACKAGE FOR DETROIT ASSURANCE DETROIT CONNECT PLATFORM	STD
RD5-101	1 YEAR DETROIT CONNECT VIDEO CAPTURE PACKAGE	\$144.00
RAG-020	CUMMINS TARIFF CHARGE - \$205	\$205.00
R26-001	MY26 ESCALATOR	\$2,500.00
P73-2FT	STANDARD DESTINATION CHARGE	\$3,375.00

(+) Weights shown are estimates only.

If weight is critical, contact Customer Application Engineering.

(**) Prices shown do not include taxes, fees, etc... "Net Equipment Selling Price" is located on the Quotation Details Proposal Report.

(***) All cost increases for major components (Engines, Transmissions, Axles, Front and Rear Tires) and government mandated requirements, tariffs, and raw material surcharges will be passed through and added to factory invoices.



VEHICLE SPECIFICATIONS SUMMARY - DIMENSIONS	
Model	M2106
Wheelbase (545).....	6000MM (236 INCH) WHEELBASE
Rear Frame Overhang (552).....	2450MM (96 INCH) REAR FRAME OVERHANG
Fifth Wheel (578)	NO FIFTH WHEEL
Mounting Location (577)	NO FIFTH WHEEL LOCATION
Maximum Forward Position (in)	0
Maximum Rearward Position (in).....	0
Amount of Slide Travel (in)	0
Slide Increment (in).....	0
Desired Slide Position (in).....	0.0
Cab Size (829)	106 INCH BBC FLAT ROOF ALUMINUM CONVENTIONAL CAB
Sleeper (682)	WALK THROUGH OPENING IN BACK OF CAB WITHOUT BOOT
Exhaust System (016).....	RH OUTBOARD UNDER STEP MOUNTED HORIZONTAL AFTERTREATMENT SYSTEM ASSEMBLY WITH RH HORIZONTAL TAILPIPE EXITING FORWARD OF REAR TIRES

TABLE SUMMARY - DIMENSIONS

Dimensions	Inches
Bumper to Back of Cab (BBC)	109.3
Bumper to Centerline of Front Axle (BA)	43.7
Front Axle to Back of Cab (AC)	65.6
Min. Cab to Body Clearance (CB)	3.0
Back of Cab to Centerline of Rear Axle(s) (CA)	170.7
Effective Back of Cab to Centerline of Rear Axle(s) (Effective CA)	167.7
Back of Cab Protrusions (Exhaust/Intake) (CP)	2.0
Back of Cab Protrusions (Side Extenders/Trim Tab) (CP)	0.0
Back of Cab Protrusions (CNG Tank)	0.0
Back of Cab Clearance (CL)	3.0
Back of Cab to End of Frame	267.2
Cab Height (CH)	63.2
Wheelbase (WB)	236.2
Frame Overhang (OH)	96.5
Overall Frame Length	371.7
Overall Length (OAL)	376.5
Rear Axle Spacing	0.0
Unladen Frame Height at Centerline of Rear Axle	33.2

Performance calculations are estimates only. If performance calculations are critical, please contact Customer Application Engineering.

G V W R

VEHICLE SPECIFICATIONS SUMMARY - GVWR

Model	M2106
Cab Size (829)	106 INCH BBC FLAT ROOF ALUMINUM CONVENTIONAL CAB
Expected Front Axle(s) Load (lbs)	8000.0
Expected Pusher Axle(s) Load (lbs)	0.0
Expected Rear Axle(s) Load (lbs)	18000.0
Expected Tag Axle(s) Load (lbs)	0.0
Expected GVW (lbs)	26000
Expected GCW (lbs)	0.0
Front Axle (400)	DETROIT DA-F-10.0-3 10,000# FF1 71.5 KPI/3.74 DROP SINGLE FRONT AXLE
Front Suspension (620)	10,000# TAPERLEAF FRONT SUSPENSION
Front Hubs (418)	CONMET PRESET PLUS PREMIUM IRON FRONT HUBS
Front Disc Wheels (502)	ALCOA 77362X 19.5X7.50 10-HUB PILOT 5.23 INSET ALUMINUM DISC FRONT WHEELS
Front Tires (093)	MICHELIN AGILIS HDZ 245/70R19.5 16 PLY RADIAL FRONT TIRES
Front Brakes (402)	MERITOR 15X5 Q+ CAST SPIDER CAM FRONT BRAKES, DOUBLE ANCHOR, FABRICATED SHOES
Steering Gear (536)	TRW THP-60 POWER STEERING
Rear Axle (420)	DETROIT DA-RS-19.0-2 19,000# R-SERIES SINGLE REAR AXLE
Rear Suspension (622)	AIRLINER 18,000# REAR SUSPENSION
Rear Hubs (450)	CONMET PRESET PLUS PREMIUM IRON REAR HUBS
Rear Disc Wheels (505)	ALCOA 77362X 19.5X7.50 10-HUB PILOT ALUMINUM DISC REAR WHEELS
Rear Tires (094)	MICHELIN AGILIS HDZ 245/70R19.5 16 PLY RADIAL REAR TIRES
Rear Brakes (423)	MERITOR 15X8.62 Q+ CAST SPIDER CAM REAR BRAKES, DOUBLE ANCHOR, FABRICATED SHOES
Pusher / Tag Axle (443)	NO PUSHER OR TAG AXLE
Pusher / Tag Suspension (626)	NO PUSHER OR TAG SUSPENSION
Pusher / Tag Hubs (449)	NO PUSHER OR TAG HUBS
Dead/Pusher/Tag Disc Wheels (509)	NO PUSHER/TAG DISC WHEELS
Pusher / Tag Tires (095)	NO PUSHER/TAG TIRES
Pusher / Tag Brakes (456)	NO PUSHER/TAG BRAKES

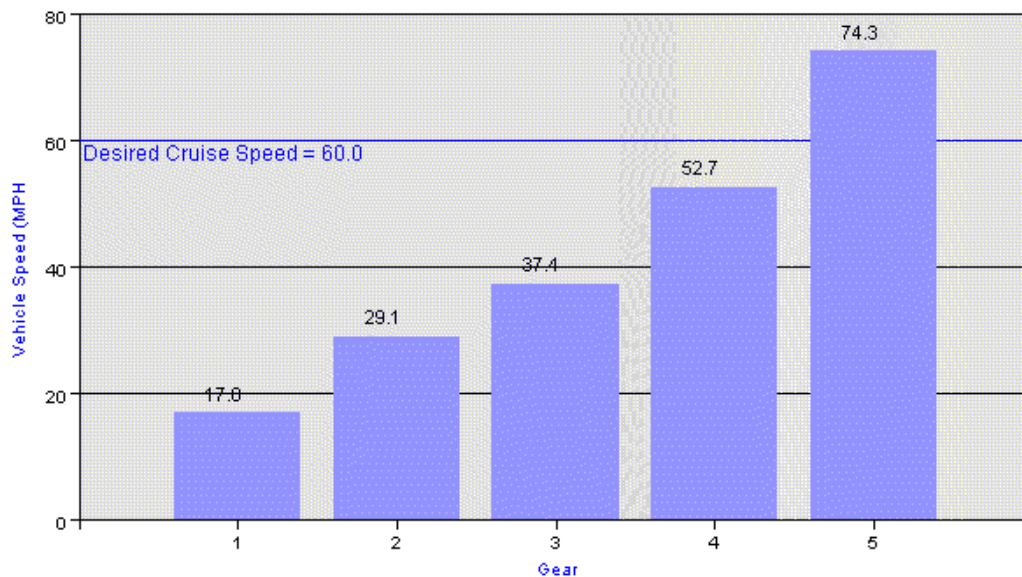
TABLE SUMMARY - GVWR

Prepared by:
 Russ Gebhard
 GOLDEN GATE TRUCK
 CENTER
 8200 BALDWIN STREET
 OAKLAND, CA 94621
 Phone: 5106323535

	Front	Rear
Axle Component Weight Ratings		
Axles	10000	19000
Suspension	10000	18000
Hubs	14700	26000
Brakes	14002	20000
Wheels	13400	26800
Tires	9880	18700
Power Steering	13300	N/A
GAWR (per axle)	9880	18000
GAWR (per axle system)	9880	18000
Expected Load (per axle system)	8000	18000
GVWR due to Frame	90000	
GVWR due to Transmission	26000	
Vehicle GVWR Summary		
Calculated GVWR	26000	
Expected GVWR	26000	
All weights displayed in pounds		

Performance calculations are estimates only. If performance calculations are critical, please contact Customer Application Engineering.

OPERATING SPEED



Rear Axle Ratio = 4.78

Engine RPM = 2600

VEHICLE SPECIFICATIONS SUMMARY - OPERATING SPEED

Model	M2106
Cab Size (829)	106 INCH BBC FLAT ROOF ALUMINUM CONVENTIONAL CAB
Top Speed (mph)	74.3
Engine RPM	2600.0
Desired Cruise Speed (mph)	60.0
Engine (101)	CUM B6.7 250 HP @ 2400 RPM, 2600 GOV, 660 LB-FT @ 1600 RPM
Governed RPM	2600
Transmission (342)	ALLISON 2200 RDS AUTOMATIC TRANSMISSION WITH PARK PAWL WITH PTO PROVISION

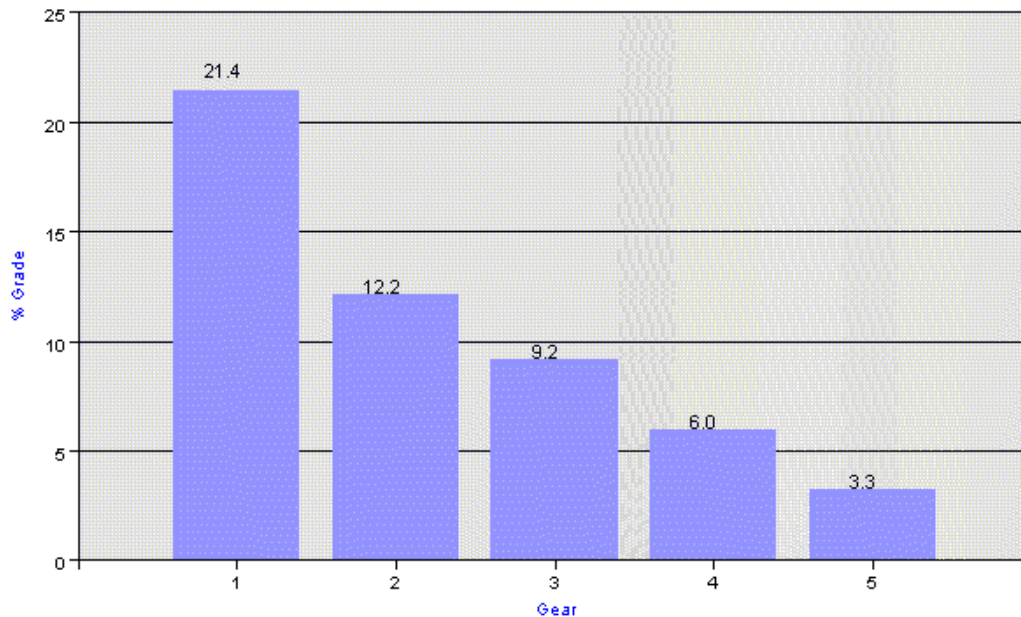
Rear Axle (420)..... DETROIT DA-RS-19.0-2 19,000# R-SERIES SINGLE REAR AXLE
 Number of Speeds 1
 Rear Axle Gear Ratio(s)..... 4.78 REAR AXLE RATIO
 Rear Tires (094)..... MICHELIN AGILIS HDZ 245/70R19.5 16 PLY RADIAL REAR TIRES
 Revolutions per Mile 619
 Auxiliary Transmission (352)..... NO AUXILIARY TRANSMISSION
 High Gear Ratio N/A
 Low Gear Ratio N/A
 Transfer Case (373)..... NO TRANSFER CASE
 High Gear Ratio N/A
 Low Gear Ratio N/A

TABLE SUMMARY - OPERATING SPEED

Transmission Gear	Transmission Gear Ratio	Overall Gear Ratio	Vehicle Speed (MPH)
1	3.10	14.82	17.0
2	1.81	8.65	29.1
3	1.41	6.74	37.4
4	1.00	4.78	52.7
5	0.71	3.39	74.3
Desired Cruise Speed (mph)			60.0
Engine RPM			2600
Rear Axle Ratio			4.78
*Blue background represents value input by user.			

Performance calculations are estimates only. If performance calculations are critical, please contact Customer Application Engineering.

GRADEABILITY



Desired Gradeability at Peak Torque = 0.5

VEHICLE SPECIFICATIONS SUMMARY - GRADEABILITY

Model	M2106
Cab Size (829)	106 INCH BBC FLAT ROOF ALUMINUM CONVENTIONAL CAB
Desired Gradeability at Peak Torque (%)	0.5
Desired Gradeability at Cruise Speed(%)	0.3
Desired Cruise Speed (mph)	60.0
Expected Front Axle(s) Load (lbs)	8000.0
Expected Pusher Axle(s) Load (lbs)	0.0
Expected Rear Axle(s) Load (lbs)	18000.0

Expected Tag Axle(s) Load (lbs)..... 0.0
 Expected GVW (lbs) 26000
 Expected GCW (lbs) 0.0
 Engine (101) CUM B6.7 250 HP @ 2400 RPM, 2600 GOV, 660 LB-FT @ 1600 RPM
 Peak Torque (lbs-ft) 660
 RPM at Peak Torque 1600
 Peak Torque (Multi-torque High) (lbs-ft) 660
 RPM at Peak Torque (Multi-torque High)..... 1600
 Multi-torque NO
 Transmission (342) ALLISON 2200 RDS AUTOMATIC TRANSMISSION WITH PARK PAWL WITH PTO PROVISION
 Rear Axle (420)..... DETROIT DA-RS-19.0-2 19,000# R-SERIES SINGLE REAR AXLE
 Number of Speeds 1
 Rear Axle Gear Ratio(s)..... 4.78 REAR AXLE RATIO
 Rear Tires (094)..... MICHELIN AGILIS HDZ 245/70R19.5 16 PLY RADIAL REAR TIRES
 Revolutions per Mile 619
 Trailer Width (in) 0.0
 Trailer Height (ground to top) (ft) 12.0
 Body Width (in) 96.0
 Body Height (ground to top) (ft) 12.0
 Roof Mounted Aero Device (784) NO AIR SHIELD OR BRACKETS
 Road Surface (AB5). SMOOTH CONCRETE OR ASPHALT PAVEMENT - MOST SEVERE IN-TRANSIT (BETWEEN SITES) ROAD SURFACE
 Auxiliary Transmission (352)..... NO AUXILIARY TRANSMISSION
 High Gear Ratio N/A
 Low Gear Ratio N/A
 Transfer Case (373)..... NO TRANSFER CASE
 High Gear Ratio N/A
 Low Gear Ratio N/A
 Trailer Configuration (AA2) NO TRAILER SPECIFIED OR NO TRAILER

TABLE SUMMARY - GRADEABILITY

Transmission Gear	Transmission Gear Ratio	Overall Gear Ratio	Vehicle Speed (MPH)	HP Available for Grade	Max Grade (%)
1	3.10	14.82	10.5	155.6	21.4
2	1.81	8.65	17.9	151.2	12.2
3	1.41	6.74	23.0	146.7	9.2
4	1.00	4.78	32.4	134.0	6.0
5	0.71	3.39	45.7	103.0	3.3
Desired Gradeability at Peak Torque			0.5		
Rear Axle Ratio			4.78		
Gross HP Available at Peak Torque			201		
RPM at Peak Torque			1600		
*Blue background represents value input by user.					

Prepared by:
 Russ Gebhard
 GOLDEN GATE TRUCK
 CENTER
 8200 BALDWIN STREET
 OAKLAND, CA 94621
 Phone: 5106323535

Transmission Gear	Transmission Gear Ratio	Overall Gear Ratio	Vehicle Speed (MPH)	HP Available for Grade	Max Grade (%)
1	3.10	14.82	13.7	173.8	18.2
2	1.81	8.65	23.5	166.1	10.2
3	1.41	6.74	30.2	157.5	7.5
4	1.00	4.78	42.6	131.7	4.5
5	0.71	3.39	60.0	66.4	1.6
Desired Gradeability at Cruise Speed			0.3		
Desired Cruise Speed			60.0		
Rear Axle Ratio			4.78		
Gross HP Available at Cruise Speed			250		
RPM at Cruise Speed			2100		
*Blue background represents value input by user.					

Performance calculations are estimates only. If performance calculations are critical, please contact Customer Application Engineering.

Q U O T A T I O N

M2 106 PLUS CONVENTIONAL CHASSIS

SET BACK AXLE - TRUCK
 CUM B6.7 250 HP @ 2400 RPM, 2600 GOV, 660 LB-FT @
 1600 RPM
 ALLISON 2200 RDS AUTOMATIC TRANSMISSION WITH
 PARK PAWL WITH PTO PROVISION
 DETROIT DA-RS-19.0-2 19,000# R-SERIES SINGLE REAR
 AXLE
 AIRLINER 18,000# REAR SUSPENSION
 DETROIT DA-F-10.0-3 10,000# FF1 71.5 KPI/3.74 DROP
 SINGLE FRONT AXLE
 10,000# TAPERLEAF FRONT SUSPENSION

106 INCH BBC FLAT ROOF ALUMINUM CONVENTIONAL
 CAB
 WALK THROUGH OPENING IN BACK OF CAB WITHOUT
 BOOT
 6000MM (236 INCH) WHEELBASE
 NO FIFTH WHEEL
 11/32X3-1/2X10-3/16 INCH STEEL FRAME
 (8.73MMX258.8MM/0.344X10.19 INCH) 120KSI
 2450MM (96 INCH) REAR FRAME OVERHANG

			PER UNIT	TOTAL
VEHICLE PRICE	TOTAL # OF UNITS (1)	\$	\$	
EXTENDED WARRANTY		\$	0	\$ 0
DEALER INSTALLED OPTIONS		\$	0	\$ 0
CUSTOMER PRICE BEFORE TAX		\$	\$	

TAXES AND FEES

TAXES AND FEES	\$	0	\$	0
OTHER CHARGES	\$	0	\$	0

TRADE-IN

TRADE-IN ALLOWANCE	\$	(0)	\$	(0)
---------------------------	----	-----	----	-----

BALANCE DUE	(LOCAL CURRENCY)	\$	\$	
--------------------	-------------------------	-----------	-----------	--

COMMENTS:

Projected delivery on ____ / ____ / ____ provided the order is received before ____ / ____ / ____.

APPROVAL:

Please indicate your acceptance of this quotation by signing below:

Customer: X_____ Date: ____ / ____ / ____.

Daimler Truck Financial

Financing that works for you.

See your local dealer for a competitive quote from Daimler Truck Financial, or contact us at Information@dtfoffers.com.

Daimler Truck Financial offers a variety of finance, lease and insurance solutions to fit your business needs. For more information about our products and services, visit our website at www.daimler-truckfinancial.com.



Pricing

(All Quotes are Valid for 30 Days)

Category/Option	Price
2026 Freightliner M2 106 Plus with 22' Body converted to a bookmobile per the following line-item specifications.	\$498,321.26
Option 1: PA/Radio Speakers (Interior and Exterior)	\$3,368.55
Option 2: Modular Workstation	\$966.32
Option 3: Modular Bench Seats	\$1,902.04
Option 4: L-Track	\$1,836.68
Option 5: 360 Camera with DVR	\$6,987.22
Option 6: Wi-Fi	\$4,679.57
Option 7: Graphics	\$10,000.00
Option 8: Workstation Chairs	\$664.96
Option 9: Awning	\$9,511.79
Option 10: Odyne Hybrid Driveline	\$117,953.85
Total Price with all Options	\$656,192.24

Payment Terms

Terms	Percentage
With Purchase Order Signed	50%
When Chassis arrives at TOSV	25%
When Project is within 30 days of Completion	15%
Acceptance Prior to Delivery	10%



Customer Approval

By signing below, I the customer, agree to be bound by the Term and Conditions contained herein.

Accepted this _____ Day of _____ , _____

Name _____

Signature _____



Warranty

Chassis: Chassis manufacturer warranty thirty-six (36) months or 36,000 miles, whichever occurs first.

Conversion: TechOps warrants its workmanship and materials for a period of one (1) year and shall begin on the date the vehicle is put into service by the original purchaser.

Manufacturer's Pass-Through: The Manufacturers of most components offer a warranty for their respective products. In all cases their warranties are separate from the TechOps Warranty. The Component Manufacturer's Warranties may exceed the TechOps warranty.

This warranty is separate from any other warranty on installed equipment that may be applicable on items included in the conversion that are warranted by their specific manufacturer (see "COMPONENT MANUFACTURER'S WARRANTY" below) such as Chassis, Air Conditioners, Heaters, Emergency lighting, Alternators, Battery chargers, Inverters, Suspension components, Cellular Phones, Etc. Individual warranties for "installed" equipment are included with the TechOps Owners/Operators Manual provided with the vehicle upon delivery to the original purchaser.

No Authority to Modify: TechOps does not authorize any person to make any representation or promise on its behalf to modify the terms or limitations of this warranty in any way.

Owner Responsibility: The owner is responsible for all normal maintenance of the conversion, including but not limited to items such as checking fan belts and normal lubrication of component parts, etc. NOTE: This warranty is not transferable. Any alterations or modifications to the conversion, component parts or wiring not approved in writing by TechOps will render this warranty void. No other express or implied warranty is applicable to this product.

Items Not Covered: TechOps is not responsible for the following:

- Premiums charged for overtime labor (associated with warranty) requested by customer
- Repairs or service performed by other than an authorized service organization
- Problems arising as a result of additions or accessories not installed or authorized to be installed by TechOps
- Depreciation or damage as a result of improper maintenance or storage, failure to follow operating instructions, misuse, accident, racing or other competitive activities, or usage of unauthorized parts
- Normal maintenance and replacement of normal wear and tear items such as oil and filter changes, tires, batteries, belts, etc.
- Towing charges, travel time or associated storage costs
- Expenses in excess of specified warranty coverage
- Loss of time, inconvenience or loss of vehicle use

Obtaining Warranty Service: To obtain warranty service under the TechOps Limited Warranty, the original purchaser must request, during the applicable warranty period, warranty service from an



authorized TechOps service organization. To initiate warranty repair work, the purchaser should contact TechOps between the hours of 9:00 a.m. and 5:00 p.m., Monday thru Friday (except holidays) at 410-604-6004 or email at sales@techopssv.com. Please have the VIN (Vehicle Identification Number), date of purchase and mileage available when you call. If any correspondence is to be sent, please address it to TechOps Specialty Vehicles 218A Log Canoe Circle, Stevensville, MD 21666. Warranty corrective action will be initiated within (48) hours after notification by the end user.

IMPORTANT: ALL WARRANTY WORK MUST BE AUTHORIZED & APPROVED BY TECHOPS SPECIALTY VEHICLES, LLC. IN WRITING OR WITH AN AUTHORIZATION TO REPAIR NUMBER PRIOR TO BEING PERFORMED.



Terms and Conditions

1. **HGAC Contract Procurement:** This procurement can be facilitated under our HGAC contract #AM10-20. When an order is placed, an HGAC worksheet shall be completed for your procurement personnel to submit to HGAC for their conformation. Their fee is not included in this proposal and will be added to the worksheet. For vehicles, the fee is \$1,000 per order whether it is for one or multiple vehicles on the same order. This purchase shall be based on TechOps' contract package plus published and non-published options.
2. **GSA Contract Procurement:** This procurement can be facilitated under TechOps GSA 23V Schedule Contract Number: 47QMCA19D0014 with end user FAR compliance. For vehicles, the GSA Industrial Funding Fee is .75% of the total sale price. This purchase shall be based on TechOps' contract package plus any applicable published and non-published options.
3. **Purchase Orders:** Customer (as indicated on the final, accepted quotation) shall submit a purchase order containing the requested conversion and related specifications or reference the provided quote number ("Purchase Order").
4. **Pricing and Quotes:** Pricing is subject to change. Except as set forth herein, all quotes will be valid for thirty (30) days. Vehicle, chassis, and/or body quotations are subject to availability and are only valid as of the date of the quote. All quotations exclude any applicable sales or use taxes unless specified and included with the price FOB-MD. Pricing to complete the Work (as hereinafter defined) is based on equipment, material, and time/labor applicable on the date the quote is prepared and/or provided to Customer. TechOps reserves the right to revise and update the quote to meet any variations, whether due to increase in wages, materials, equipment, or increased cost outside TechOps' reasonable control or in relation to conditions discovered during the Work being performed. All pricing changes will be submitted to the Customer, including changes in chassis and/or body price, via a Change Order and TechOps reserves the right to update and/or revise final pricing. Additionally, TechOps reserves the right to select all equivalent parts as long as they meet the specifications provided by the Customer.
5. **Services:** Once a Purchase Order is submitted, TechOps will provide conversion services in accordance with the specifications set forth on the final accepted quotation, and any amendments thereto (the "Work"). The Work shall be performed in Stevensville, MD unless otherwise specified by TechOps in TechOps sole discretion. TechOps will perform all Work in a good and workmanlike manner. TechOps will work with the Customer to determine appropriate specifications, materials, and equipment when appropriate. Customer acknowledges that TechOps is not responsible for the accuracy or appropriateness of any specifications provided by the Customer.
6. **Vehicle/Chassis Purchase & Arrival:** TechOps is not a dealer. However, TechOps may assist the Customer with selecting a vehicle, chassis, and/or body from a dealer that is suitable for the conversion based on the specifications provided by the Customer and TechOps knowledge and experience. TechOps will endeavor to help the Customer purchase a safe and reliable vehicle, chassis, and/or body. TechOps may, in its sole discretion, advance payments for the vehicle, chassis, and/or body to such dealers on behalf of Customer. Customer acknowledges that the vehicle, chassis, and/or body will be purchased directly from the dealer and that TechOps does not, and will not, take title to the vehicle prior to its sale to the Customer.



If TechOps assists the Customer with the purchase of the vehicle, chassis, and/or body, TechOps will arrange for delivery of the vehicle to TechOps for conversion by the dealer. If the Customer purchases a vehicle, chassis, and/or body without the assistance of TechOps, Customer shall arrange for the vehicle, chassis, and/or body to be delivered to TechOps. Customer shall be responsible for all delivery, transportation, or any related costs or expenses. All training, if included in the quotation, shall take place at TechOps facility in Stevensville, MD, unless otherwise specified.

7. Production Time; Commencement; and Completion Date: Production time shall be estimated by the Project Manager when the order is placed taking into consideration the estimated arrival of the vehicle, chassis, and/or body at TechOps, equipment. The production time estimate will be confirmed when all plans are approved by TechOps and accepted by the Customer. The necessity of special parts or changes in the type of equipment, materials, vehicle, chassis, or body, or a delay in delivery of the vehicle, chassis, or body may cause a delay to the estimated production time. The Work will commence upon delivery of the vehicle, chassis, body, equipment, or materials, whichever is delivered to TechOps later. All delays will be communicated to the Customer by TechOps. Any completion date or delivery date indicated by TechOps is subject to change by TechOps its sole discretion. The time for completion of the Work or delivery is not "of the essence." TechOps will encumber the chassis and/or body upon receipt of the deposit payment from the Customer and signed specs; however, TechOps has no control over the timing and delivery of chassis and body from dealerships and/or body manufacturers. TechOps will provide estimates and updates on this timing throughout the project.

8. Change Orders: Any modifications to the initial order will result in a Change Order to be signed by the Customer. Change Order pricing is billed on a tier-basis and dependent on the on the current status of the project (i.e. pre-engineering, engineering, production) at the time the Change Order is presented. All Change Orders are invoiced separately from the milestone payments on the original order and due in full upon Customer approval of the Change Order. Modifications in scope and materials will result in a new production time estimate for the overall project, and a new completion date estimate will be provided by the Project Manager once plans are approved by TechOps and accepted by the Customer. TechOps reserves the right to revise and update pricing at any point during the project if there are material increases in cost and/or labor changes. TechOps reserves the right to hold original milestone payment due dates in the event of a project delay caused by a Change Order. In such instances, Customer will be invoiced for the milestone as planned with a holdback amount to be due upon completion.

9. Cancellation; No Refunds: Upon acceptance by the Customer of the final quotation, the Work may not be cancelled unless otherwise agreed upon in writing by TechOps. In the event the Customer cancels an order, the Customer shall not be entitled to a refund of any amount paid to TechOps by Customer. Customer shall remain responsible for all amounts advanced on Customer's behalf pursuant to the approved Work, including, but not limited to, amounts paid to dealers, vendors, or suppliers for equipment, materials, vehicles, chassis, or bodies. TechOps may cancel the Work at any time. If TechOps cancels the Work, TechOps shall refund all payments made to TechOps; provided however, that TechOps shall not be required to refund any amount of advanced payments made on behalf of the Customer by TechOps to dealers for the vehicle, chassis, and/or body. TechOps shall cooperate with the Customer to assist Customer with obtaining possession and title of the vehicle, chassis, and/or body.

10. Payments and Deposits: Payments and Deposits: Upon submission of a Purchase Order, Customer shall pay to TechOps a deposit in the amount equal to 50% of the Total Contract Price (as set forth in the final, accepted quotation). If TechOps assists the Customer with purchasing a vehicle, chassis, and/or body by advancing payment on behalf of the Customer to the dealer, the Customer shall pay to TechOps 25% of the Contract Price (as set forth in the final, accepted quotation, the "Vehicle Price") upon completion of the vehicle, chassis, and/or body (as identified by TechOps). 15% of the Total Contract Price,



including any outstanding balances for Change Orders, shall be paid 30 days prior to completion of the Work. The remaining 10% balance of the Contract Price shall be paid at acceptance of the vehicle. Failure to pay any amount when due shall result in TechOps charging a storage fee of \$100.00 per day until past due amounts and the storage fees are paid in full. TechOps will not release the vehicle or MSO until all balances due have been paid in full.

As project completion nears, TechOps will coordinate inspection and acceptance with the Customer. Customer is solely responsible for being available to inspect and accept vehicle at the end of a project. Any delays in acceptance due to Customer scheduling are subject to the storage fee noted above. Regardless of Customer's availability to schedule acceptance, payment is due in full within ten (10) days of project completion.

All payments shall be made to TechOps Specialty Vehicles, 218-A Log Canoe Circle, Stevensville, MD 21666. Payments shall be made by wire transfer, check, or credit card, unless otherwise agreed by TechOps in writing. A fee of 3.5% will be charged to the Customer and added to each payment amount for all credit card payments. The wiring information is as follows: Eagle Bank, 7815 Woodmont Ave, Bethesda, MD 20814. ABA: 055003289, Account: 200418283.

11. Delivery: Upon completion of a project, all vehicles are FOB TechOps Specialty Vehicles, 218-A Log Canoe Circle, Stevensville, MD 21666 unless otherwise stated. The Customer is solely responsible for coordinating and scheduling transportation of the finished vehicle from TechOps facility to its destination. If delivery is requested as part of the quote, TechOps will provide a transportation allowance estimate. This estimate will not be finalized and reconciled until a certified third party provides a quotation at the end of the project. All delivery charges will be billed separately from all milestones at the time of delivery of the completed project.

12. Rights of TechOps Upon Nonpayment by Customer: In the event the Customer fails to pay the remaining balance of the Total Contract Price when due, TechOps reserves the right to suspend the Work, withhold delivery of the converted vehicle to the Customer, and/or may pursue all legal rights and remedies in both law and equity inclusive of both Maryland's Contract Lien Act and §16-200, et seq. of the Maryland Commercial Law Article. By accepting the quotation, Customer acknowledges TechOps' security interest and right to lien Customer's vehicle, chassis, and/or body for installed, yet unpaid equipment, materials, labor, parts, and supplies.

13. Force Majeure: In the event that either TechOps or Customer is unable to perform any of its obligations under these Terms and Conditions because of any Act of God, strike, fire, flood, governmental acts, orders or restrictions, internet system unavailability, system malfunctions, epidemic, pandemic, or any other reason where failure or delay to perform is beyond the reasonable control and not caused by the gross negligence of the non-performing party (a "Force Majeure Event"), the party who has been so affected shall give notice immediately to the other party and shall use its reasonable and its best efforts to resume performance as soon as practicable. Failure to meet projected "due dates" resulting from a Force Majeure Event shall extend such due dates for a reasonable period of time.

14. Limited Warranty; Manufacturer Warranties: TechOps offers a one (1) year warranty for its wiring and cabinetry workmanship beginning on the date the vehicle is delivered to the Customer. In the event any repairs or replacement of warranted items covered by TechOps' one (1) year warranty, Customer is required to contact TechOps Service Department within ten (10) days to obtain approval for any and all repairs or replacements covered under the one (1) year warranty. Once approved, Customer or its authorized representative shall submit an invoice to TechOps' Accounting Department for payment. Approval must be obtained in writing prior to commencing and completing any repairs or replacement. TechOps warranty does not cover damage to the vehicle or its workmanship resulting from negligence, unauthorized modifications, natural disaster, accident, theft, or loss.



The chassis, vehicle body, and all equipment, components, materials are warranted by their respective manufacturers. TechOps offers optional extended warranties. EXCEPT AS OTHERWISE SET FORTH HEREIN OR AGREED UPON IN WRITING SIGNED BY THE PARTIES, TECHOPS DOES NOT WARRANT (WHETHER EXPRESS, IMPLIED, OR OTHERWISE, WITHOUT LIMITATION, ANY IMPLIED WARRANTIES OF MERCHANTABILITY OR FITNESS FOR A PARTICULAR PURPOSE) THE CHASSIS, VEHICLE BODY, OR ANY OF THE EQUIPMENT, COMPONENTS, OR MATERIALS USED IN PERFORMING THE WORK.

15. Limitation of Liability: IN NO EVENT WILL TECHOPS HAVE ANY LIABILITY OR RESPONSIBILITY FOR ANY INDIRECT, INCIDENTAL, EXEMPLARY, SPECIAL, OR CONSEQUENTIAL DAMAGES (INCLUDING, LOST INCOME AND PROFITS), EVEN IF ADVISED OF THE POSSIBILITY OF SUCH DAMAGES, RELATED TO THE WORK OR THESE TERMS AND CONDITIONS. TECHOPS SHALL NOT BE RESPONSIBLE OR LIABLE FOR ANY VEHICLE, CHASSIS, BODY, MATERIALS, EQUIPMENT, OR COMPONENTS USED IN PERFORMANCE OF THE SERVICES AND THE CUSTOMER AGREES NOT TO BRING ANY CLAIM, SUIT, OR CAUSE OF ACTION AGAINST TECHOPS RELATED TO THE SAME.

TO THE MAXIMUM EXTENT PERMITTED BY APPLICABLE LAW, TECHOPS' LIABILITY FOR DAMAGES FOR ANY CAUSE OF ACTION WHATSOEVER REGARDING, RELATED TO, OR ARISING OUT OF THESE TERMS AND CONDITIONS OR THE WORK WILL NOT EXCEED THE TOTAL CONTRACT PRICE.

NO CLAIM, ACTION, DISPUTE OR CAUSE OF ACTION, OF ANY KIND OR NATURE WHATSOEVER, ARISING FROM OR IN CONNECTION WITH THESE TERMS AND CONDITIONS OR THE WORK MAY BE BROUGHT BY THE CUSTOMER MORE THAN ONE YEAR AFTER THE OCCURRENCE GIVING RISE TO THE CAUSE OF ACTION OR BE BARRED FOREVER, EXCEPT THAT ANY CLAIM, ACTION OR CAUSE OF ACTION FOR NON-PAYMENT MAY BE BROUGHT WITHIN TWO YEARS AFTER THE DATE ON WHICH PAYMENT WAS DUE.

16. Customer Supplied Equipment: Any Customer supplied equipment must arrive complete and correct for the installation, and in good working condition. TechOps SV shall not be responsible for any Customer supplied equipment not 100% functional upon arrival. Any pricing quoted does not include any parts, components, repair, or modifications to existing equipment. The Work cannot commence until all parts are delivered to TechOps. Used equipment may be subject to additional charges and will carry no warranty except for workmanship. If there are any failures during or after the Customer supplied equipment, the Customer shall be responsible for the cost of all repairs and related expenses. TechOps reserves the right to reject the use of Customer supplied equipment in its sole discretion. TechOps reserves the right to hold original milestone payment due dates in the event of a project delay caused by Customer supplied equipment. In such instances, Customer will be invoiced for the milestone as planned with a holdback amount to be due upon completion.

All Customer supplied communications equipment must be complete, fully operational, and programmed upon arrival at TechOps. Equipment that does not meet the foregoing requirements will be installed in the designated locations with all wiring in place but not attached to the equipment. TechOps will have no further responsibility and it will be necessary for Customer's communications vendor to complete the installation. At the request of the Customer, TechOps may make arrangements at a qualified local vendor to complete the installation, and the Customer shall be responsible for any and all expenses and costs incurred by TechOps. Customer acknowledges that the Work will be delayed until the equipment is returned in good, working order.

17. Binding Effect: The individual accepting the quote represents that he/she/it/they has the legal authority to bind the Customer to the terms and conditions of these Terms and Conditions and any amendments thereto.

18. Governing Law, Jurisdiction, & Limitations: These Terms and Conditions and the parties' actions, rights and liabilities under these Terms and Conditions shall be governed by and construed under the laws of the State of Maryland, without reference to conflict of law principles. The parties hereby expressly



consent to the jurisdiction and venue of the federal and state courts within the State of Maryland. Venue shall be in the Queen Anne's County Circuit Court located in Centreville, Maryland or the United States Federal District in Baltimore, as the case may be.

19. Proprietary Information: All Proprietary Information, including all drawings, specs, patents, trade secrets and other rights in connection with the project shall be the sole property of the TechOps. Customer shall not use or disclose any Proprietary Information or anything relating to it for any other spec or Request for Proposal. TechOps reserves the right to utilize Customer drawings, specifications, and photos for its other projects.

19. Entire Agreement: These Terms and Conditions and the final, accepted quotation referenced herein, constitute the entire agreement between the Parties concerning all Work, parts equipment, materials, labor, vehicles, chassis, and bodies provided by TechOps and supersedes all previous communications, representations, understandings, and agreements, whether verbal or written between the parties or their authorized representatives to these Terms and Conditions. No representation or statement of any kind made by either party, which is not expressly stated in this Agreement, shall be binding on the Parties hereto.

20. Amendments: No waiver, amendment, or modification of any provisions of these Terms and Conditions shall be effective unless in writing and with the express approval of TechOps. This is exclusive of TechOps' right to modify, alter or amend any terms and conditions with or without notice to the Customer.

21. Notices: Any notices under these Terms and Conditions or the final, accepted quotation, shall be considered to have been given when hand-delivered or sent by email or telefax, or three (3) days after being sent by first-class or certified mail, return receipt requested, to the other Party hereto.

22. Waiver: No failure or delay by either party in exercising any claim right, power or remedy under these Terms and Conditions, shall operate as a waiver of any such claim, right, power or remedy.

23. Attorneys' Fees, Costs, and Expenses: In the event of any lawsuit, collection, or any legal proceeding by TechOps involving these Terms and Conditions, the Customer shall be responsible for the payment of any and all court costs, TechOps' attorneys' fees incurred, collection costs, professional costs, expert fees, investigator costs, and any other miscellaneous expenses incurred by TechOps.

24. Assignability & Binding Effect: Except as expressly set forth within Terms and Conditions, the Customer may not transfer or assign, directly or indirectly, these Terms and Conditions or its rights and obligations hereunder without the express written permission of the TechOps. TechOps shall have the right to assign or otherwise transfer these Terms and Conditions to any parent, subsidiary, affiliated entity or pursuant to any merger, consolidation or reorganization, provided that all such assignees and transferees agree to be bound by these Terms and Conditions prior to such assignment or transfer. These Terms and Conditions shall be binding upon and inure to the benefit of the parties hereto, their successors, and assigns.

25. Certain Sections Invalid: If any provisions or portions thereof of Terms and Conditions are held by a court of competent jurisdiction to be invalid under any applicable statute or rule of law, they are to that extent deemed omitted and the remaining provisions of these Terms and Conditions shall remain in full force and effect.

26. Paragraph Headings: The titles and headings of the various sections and sections in these Terms and Conditions are intended solely for convenience of reference and are not intended for any other purpose whatsoever, or to explain, modify or place any construction upon or on any of the provisions of these Terms and Conditions.