

# LOCAL CONDITIONS: WATER YEAR 2025-2026

JOSIE SLOVUT

ENVIRONMENTAL COMPLIANCE SPECIALIST, MENDOCINO COUNTY

[SLOVUTJ@MENDOCINOCOUNTY.GOV](mailto:SLOVUTJ@MENDOCINOCOUNTY.GOV)



# DROUGHT TRIGGER METRICS

- US Drought Monitor (USDM) classifications
- Dry well reports to California Department of Water Resources
- Current year hydrology
  - Lake Mendocino reservoir storage (inland)
  - Two-year precipitation accumulation (coastal)

# US DROUGHT MONITOR CLASSIFICATIONS

- The USDM is a “snapshot” of drought conditions based on recent measurements of precipitation, streamflow, reservoir levels, temperature, evaporative demand, soil moisture, vegetation health, and other factors.
- The National Oceanic and Atmospheric Administration (NOAA), the USDA, and the National Drought Mitigation Center at the University of Nebraska-Lincoln update the USDM weekly.

- “None”= normal or wet conditions
- D0 = abnormally dry

- D1 = drought-moderate

- D2=drought-severe

- D3=drought-extreme

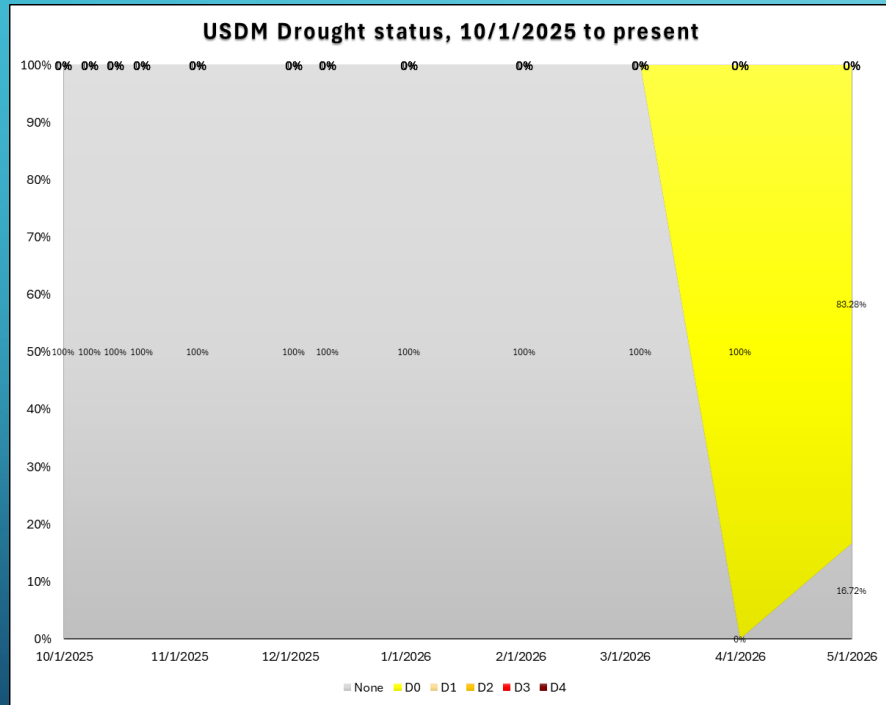
- D4=drought-exceptional

**Stage 1 –  
Water  
Shortage  
Monitoring**

**Stage 2 –  
Water  
Shortage  
Warning**

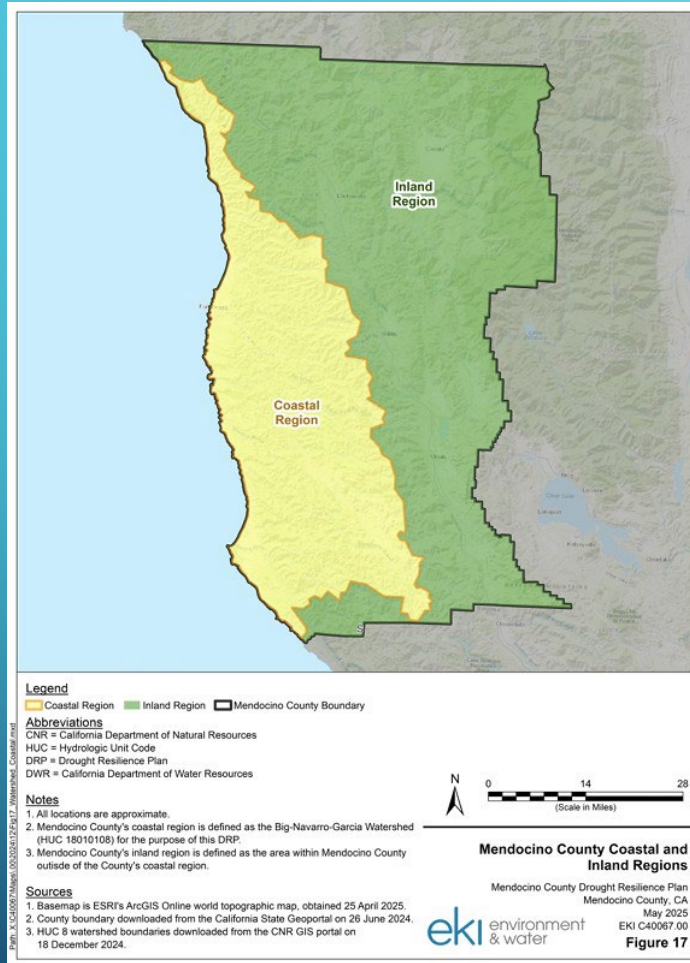
**Stage 3 –  
Severe and  
Emergency  
Water  
Shortage**

# US DROUGHT MONITOR CLASSIFICATIONS



- From October 2025 through March 2026, the entire County was given a “None” classification.
- At the beginning of April, the entire County was reclassified as D0 – abnormally dry conditions.
- At the beginning of May, 17% of the County was given a “None” classification and the remaining 83% was classified as D0.

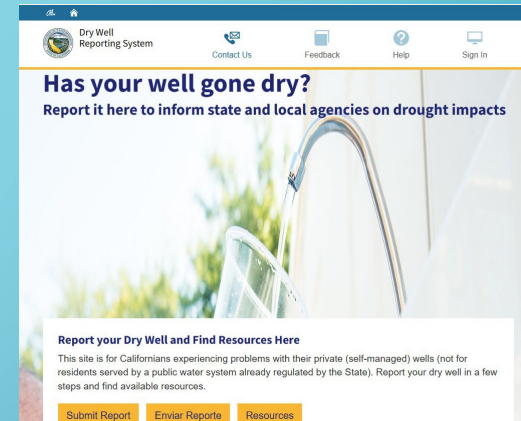
# REGIONAL TRIGGERS



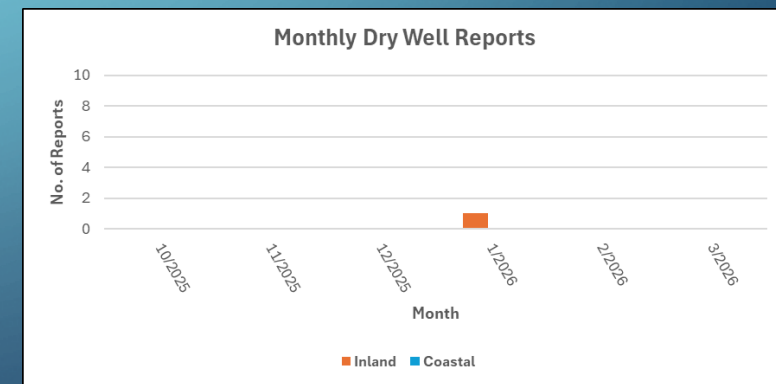
- The number of dry well reports and current year hydrology triggers are measured differently for inland and coastal Mendocino County.
- For this monitoring, “coastal Mendocino County” encompasses the Big-Navarro-Garcia watershed and “inland Mendocino County” encompasses the remainder of the County.

# DRY WELL REPORTS

- MyDryWell allows Californians to report problems with private wells to inform state and local agencies of drought impacts on households.
  - All data is publicly available except for name, address, and contact information.
  - This is not tied to enforcement. You will not get in trouble for reporting a dry well.
- Our drought trigger is the number of dry well reports to DWR in any 3-month period:
  - Stage 1: <4 reports
  - Stage 2: 4-6 reports (inland), or 4-12 reports (coastal)
  - Stage 3: >6 reports (inland) or >12 reports (coastal)

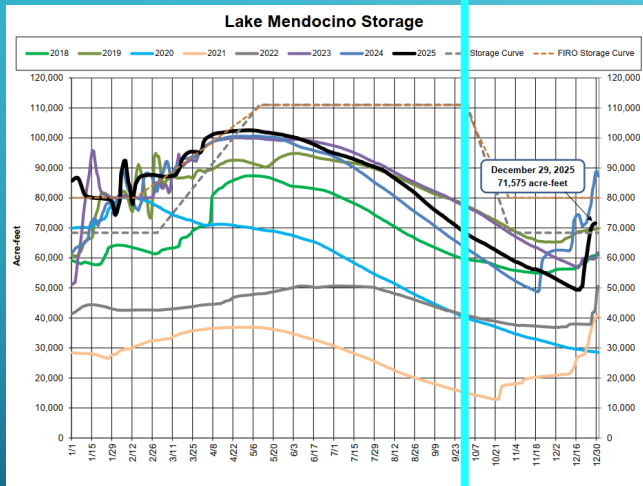


[mydrywell.water.ca.gov/report](http://mydrywell.water.ca.gov/report)

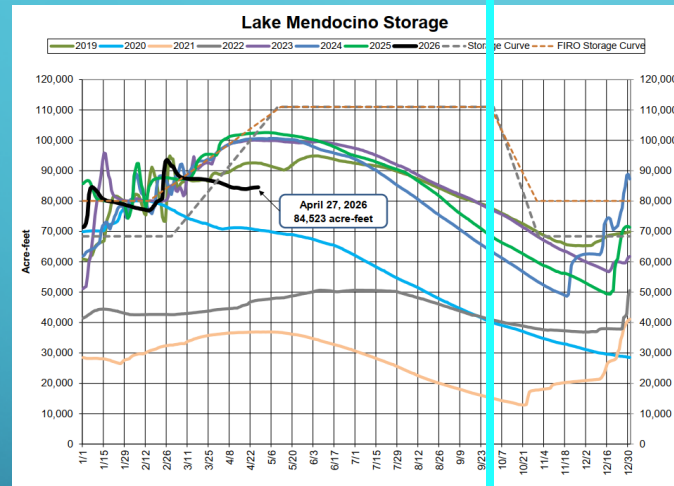


# CURRENT YEAR HYDROLOGY: RESERVOIR STORAGE

## 2025-2026 Water Year



Source: Inland Water and Power Commission

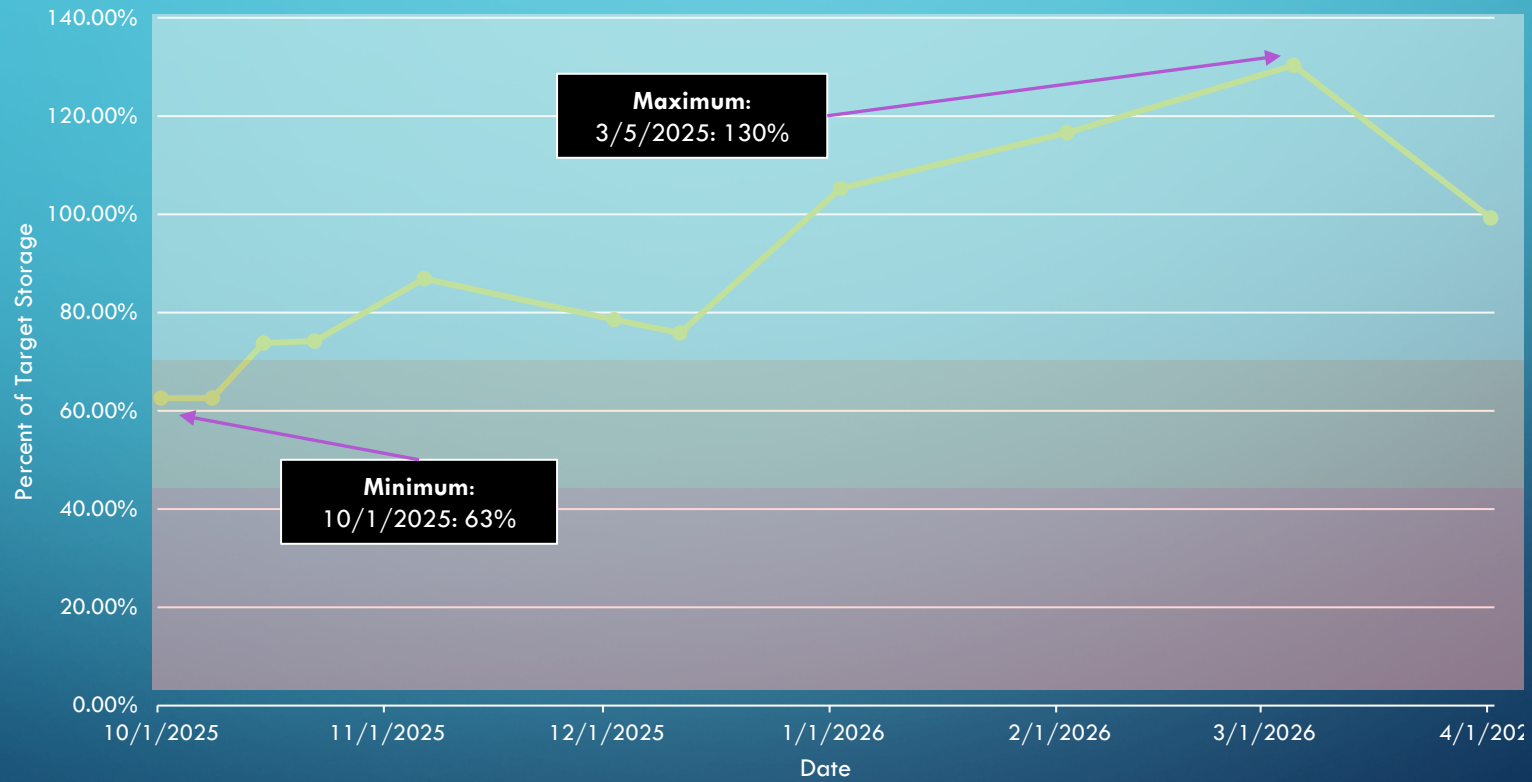


Source: Inland Water and Power Commission

- To assess reservoir storage, the Mendocino County Water Agency tracks Lake Mendocino storage levels as a percentage of the target storage curve (the grey dotted line).

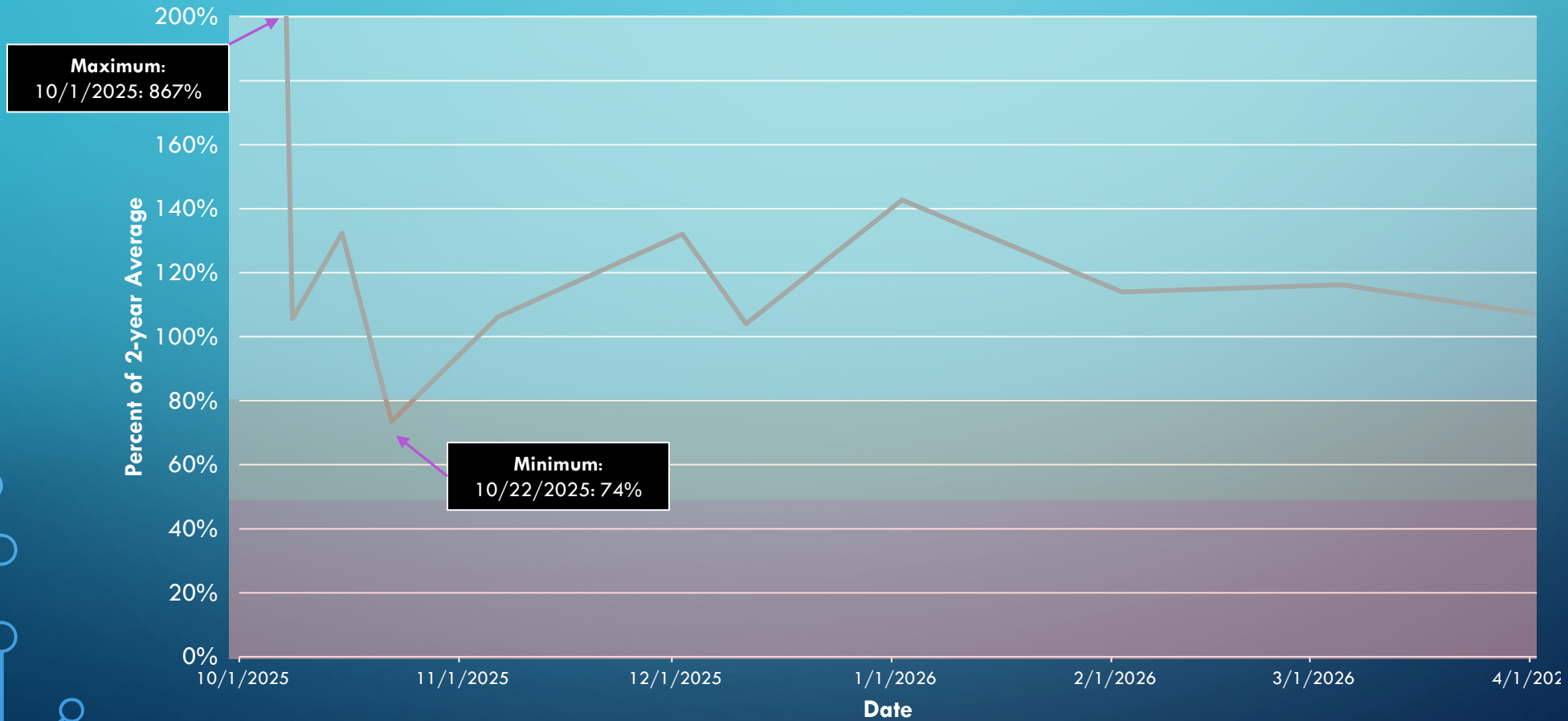
# CURRENT YEAR HYDROLOGY: RESERVOIR STORAGE

Lake Mendocino Storage as Percentage of Target



# CURRENT YEAR HYDROLOGY: TWO-YEAR PRECIPITATION TOTALS

## Big-Navarro-Garcia Watershed Two-Year Precipitation Totals



# IN SUMMARY...

We are here

## Stage 1

### Water Shortage Monitoring

- Track Drought Response Triggers
- Convene CDTF meetings
- Community outreach and education
- GSA coordination
- Partnership with NGOs
- Facilitation of mutual aid agreements
- Identification of additional funding

## Stage 2

### Water Shortage Warning

- Continue Stage 1 actions
- Community engagement and outreach
- Voluntary Water Cutbacks
- Temporary ordinances

## Stage 3

### Severe and Emergency Water Shortage

- Continue Stage 1 & Stage 2 actions
- Increased and enhanced community engagement
- Identify and pursue additional funding
- Seek state & federal emergency declarations
- Emergency and interim water supplies (filling stations, water hauling, bottled water), contingent upon available funding

# MCWA DROUGHT RESILIENCE PLAN IMPLEMENTATION

- Monitoring drought triggers
- Convening Drought Task Force Meetings
- Sharing information with drought response partners and the public
  - Visit our Drought Portal at <https://www.mendocinocounty.gov/government/mendocino-county-water-agency/drought-water-conservation> or using the QR code to the right
- Email us at [mcwa@mendocinocounty.gov](mailto:mcwa@mendocinocounty.gov)

